

POP OUT SWING CARD

See video class on my blog for help with the card fold.

MEASUREMENTS

- Crumb Cake Card Base: 8-1/2" x 5-1/2" scored in half
- Crumb Cake Pop Out Mechanism: 6" x 4-1/2"
 - Scored at 2" & 4"
- Patterned Card Front & Inside: (2) 5-1/4" x 4"
 - I cut these layers from a card base from the kit.
- Basic White (Inside): 4" x 3-1/2" Score at 1-3/4"



INSTRUCTIONS

- Using the Stampin' Cut & Emboss Machine:
 - Everyday Arches Dies
 - 4th & 6th Largest Dies: Cut the front Frame from Wood Grain Wonders Designer Paper.
 - Attach the printed paper to the card front and cut out the center of the card front with the 6th largest die.
 - Attach the pink polka dot strip from the kit to white scrap and cut out with 6th Largest die.
 - Detailed Flora Die: Cut miscellaneous flowers from the envelopes in the kit.
- Stamp the following
 - Words on the white arch layer in black ink.
 - Butterflies on the inside in Flirty Flamingo.
- **Assembly:**
 - Attach the wood grain frame to the front.
 - Attach the inside printed paper, then attach the Pop Out Mechanism.
 - Close the card and line up the white arch in the window. Attach with Stampin' Dimensionals.
 - Decorate the flower box with the die cuts and attach.



Bikes & Blooms Pop Swing Card

Tami White
 tami@stampwithtami.com
 www.stampwithtami.com



Bikes & Blooms
 Paper Pumpkin
 Refill (English) -
 171466



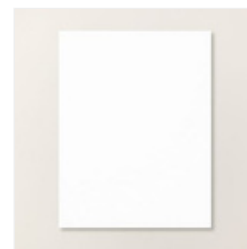
Paper Pumpkin
 Subscription -
 166815



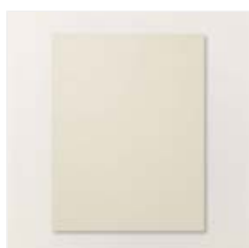
Basic Black Hybrid
 Stampin' Pad -
 166648



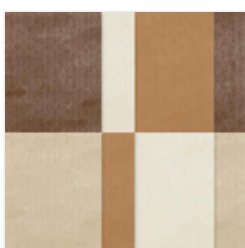
Flirty Flamingo
 Classic Stampin'
 Pad - 147052



Basic White 8-1/2"
 X 11" Cardstock -
 166780



Basic Beige 8-1/2"
 X 11" Cardstock -
 164511



Wood Grain
 Wonders 12" X 12"
 Designer Series
 Paper - 167428



Detailed Flora Dies
 (English) - 168664



Everyday Arches
 Dies - 164629



Paper Trimmer -
 152392



Mini Stampin' Cut
 & Emboss
 Machine - 150673



Stampin' Seal -
 152813



Stampin'
 Dimensionals -
 104430

