



Tami White
tami@stampwithtami.com
www.stampwithtami.com



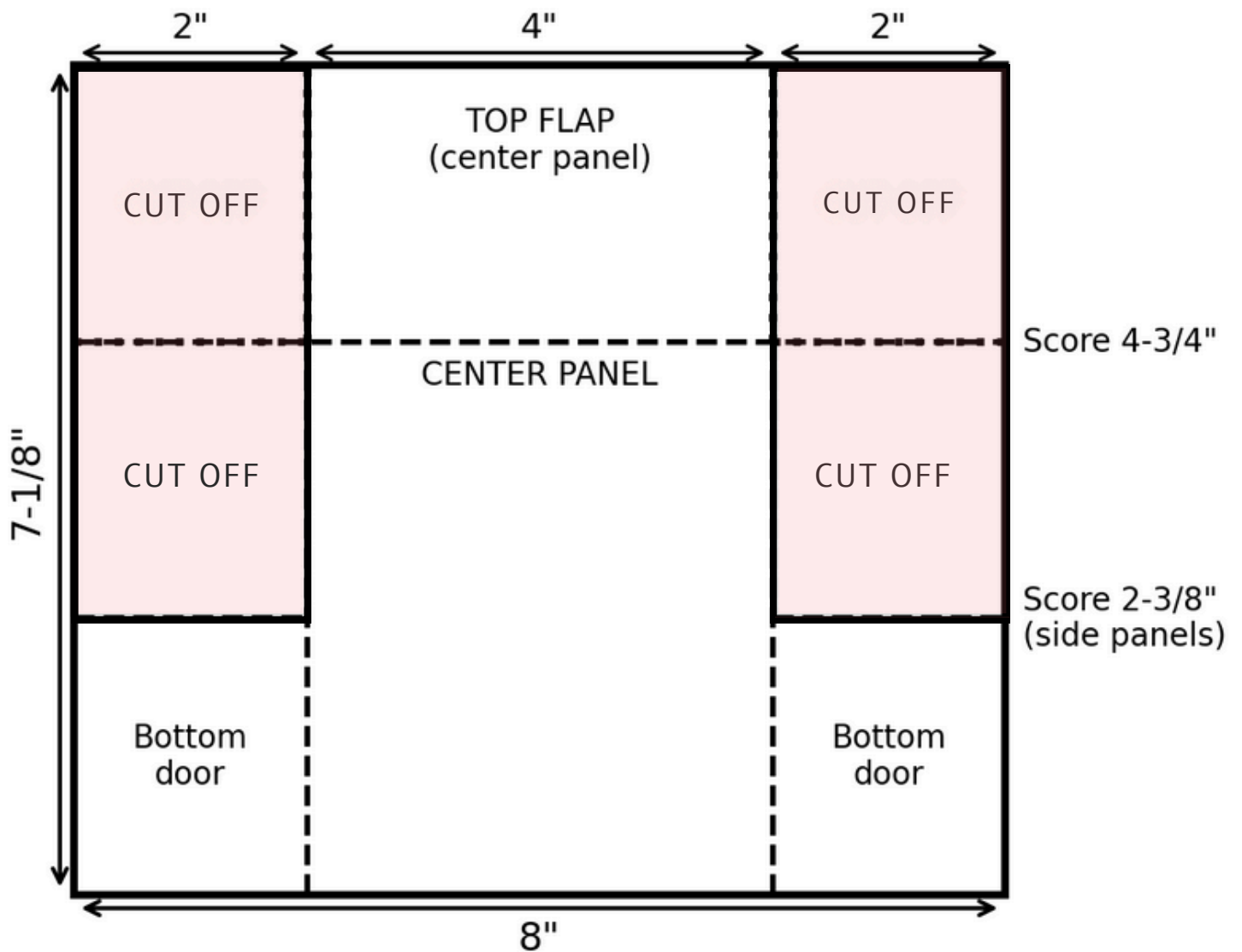
MEASUREMENTS

- Basic White Cardbase: 8" x 7-1/8"
 - Score on the long side at 2" on both sides.
 - Score on the short side at
 - 4-3/4" all the way across
 - 2-3/8" to the score line on either side.
 - Cut the top 2 side panels off so only the bottom doors remain.
- Gold Foil: 3-7/8" x 2-1/4", (2) 2-1/4" x 1-7/8", Band 8-3/4" x 1/2"
- Irresistible Designs: 3-3/4" x 2-1/8", (2) 2-1/8" x 1-3/4"

INSTRUCTIONS

- Cut and score the card base per the dimensions and guide.
- Stamp the words in Versamark ink on whit scrap and the inside of the card base. Heat emboss in Gold.
- Using the Stampin' Cut & Emboss Machine:
 - Die cut the words with the label die from the Beautifully Celebrated Dies.
 - Die cut a gold frame from the next largest label die.
- Assemble the card .
- Decorate with Beautifully Adorned Ephemera.
- Assemble the card with Seal Adhesive & Stampin' Dimensionals.
- Attach embellishments.





Fabulous Sayings Double Dutch Gatefold Card

Tami White
tami@stampwithtami.com
www.stampwithtami.com



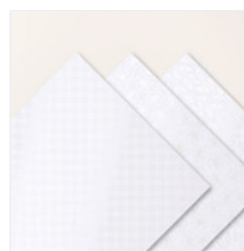
Fabulous Sayings
Photopolymer
Stamp Set
(English) - 167972



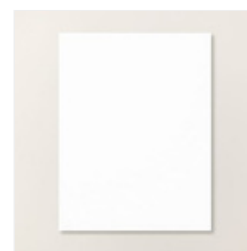
VersaMark Pad -
102283



Gold Foil Sheets -
132622



Irresistible Designs
12" X 12" (30.5 X
30.5 Cm) Specialty
Designer Series
Paper - 165305



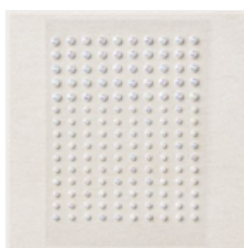
Basic White 8-1/2"
X 11" Cardstock -
166780



Beautifully
Adorned
Ephemera Pack -
166980



Metallics Wow!
Embossing
Powder - 165678



Iridescent Pearl
Basic Jewels -
158987



Beautifully
Celebrated Dies -
166974



Heat Tool - 129053



Paper Trimmer -
152392



Stampin' Cut &
Emboss Machine -
149653



Stampin' Seal -
152813



Stampin'
Dimensionals -
104430

