



Tami White
tami@stampwithtami.com
www.stampwithtami.com



FALL FOR TOILE Z FOLD

CARD CUTS

- Pool Party Card Base #1: 11" x 4-1/4" Score at 2-3/4" & 5-1/2"
- Earthen Metallic Foil: (2) 5" x 3-3/4"
- Very Vanilla: 4-3/4" x 3-1/2"



INSTRUCTIONS

- Stamp word "thankful" in Versamark on Early Espresso Scrap paper and heat emboss in white.
- Stamp the greeting for the inside in Early Espresso ink on the Vanilla layer.
- Using the Stampin' Cut & Emboss Machine:
 - Die cut the words with a label from the Beautiful Butterflies dies set.
 - Die cut foliage from the Earthen Metallic with the Abundant Joy Paper Pumpkin dies.
- Hand cut some pumpkins from the designer series paper.
- Using Stampin' Blends Markers color the die cut printed layer for the front and the pumpkins from the designer paper.
- Assemble the card with Seal Adhesive and Stampin' Dimensionals.
- Wrap the Bakers Twine around the front and attach Streaked Dots.



Fall for Toile Z Fold Card

Tami White
tami@stampwithtami.com
www.stampwithtami.com



Paper Pumpkin
Subscription -
166815



Fall For Toile
Paper Pumpkin
Refill - 167842



VersaMark Pad -
102283



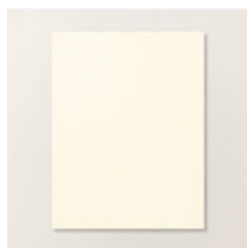
Early Espresso
Classic Stampin'
Pad - 147114



Earthen Toned Metallic
12" X 12" Specialty
Paper - 165901



Pool Party 8-1/2" X
11" Cardstock -
122924



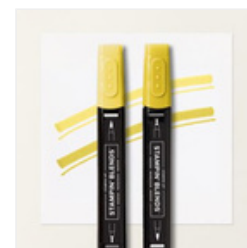
Very Vanilla 8-1/2" X
11" Cardstock -
166784



Early Espresso 8-
1/2" X 11"
Cardstock - 119686



Pumpkin Pie Stampin'
Blends Combo Pack -
154897



Darling Duckling
Stampin' Blends
Combo Pack - 165288



Old Olive Stampin'
Blends Combo Pack
- 154892



Pecan Pie Stampin'
Blends Combo Pack
- 161674



Pool Party Stampin'
Blends Combo Pack -
154894



Basics Wow!
Embossing
Powder - 165679



Black & White &
Gold Baker's
Twine - 166005



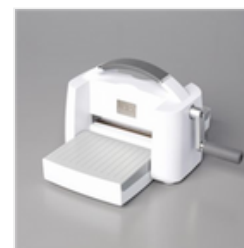
Beautiful Butterflies
Hybrid Embossing
Folder - 164614



Abundant Joy Dies -
167855



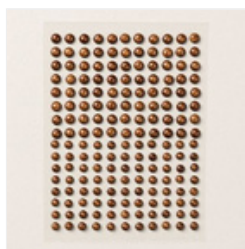
Paper Trimmer -
152392



Stampin' Cut &
Emboss Machine -
149653



Heat Tool - 129053



Streaked Dots -
165902



Autumn Toile 12" X
12" Designer Series
Paper - 165882

