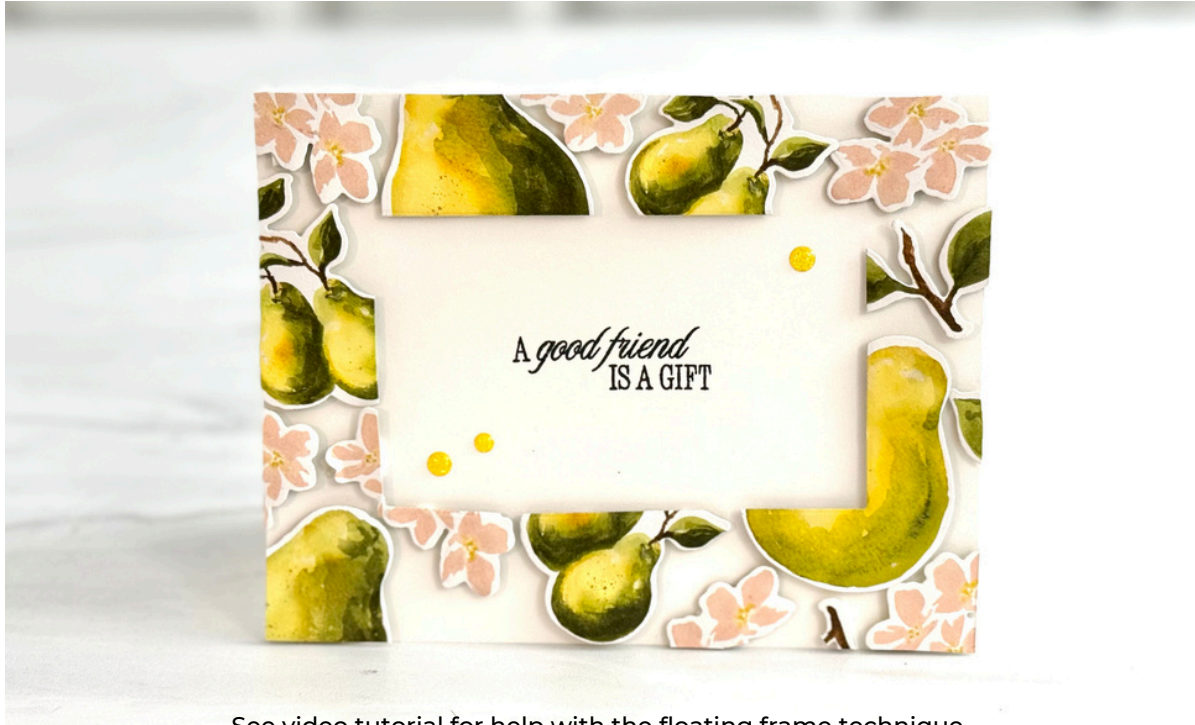




PAINTERLY PEARS FLOATING FRAMES CARD



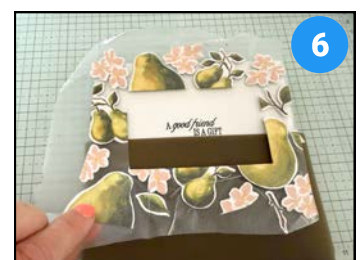
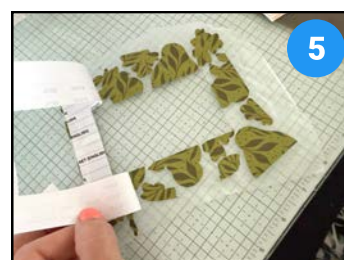
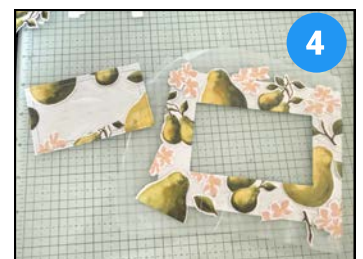
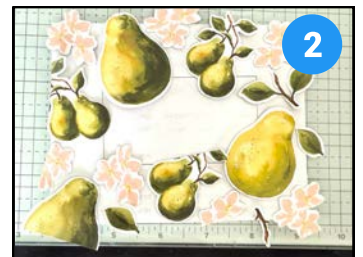
See video tutorial for help with the floating frame technique.

CUTS

- Basic White Card Base: 5-1/2" x 8-1/2" Score in half
- Scrap paper: 5-1/2" x 4-1/4"

INSTRUCTIONS

- Use a pen/pencil to trace the Textured Notes rectangle die on recycled scrap paper **1**.
- Line up all of the die cuts over the recycled paper. Use the outline of the die cuts as your placement guide **2**.
 - Tips: This technique looks best when you go off the edge and have images cross over the line where the die will cut.
- Carefully cover the scrap paper and die cuts with Press 'n Seal **3**.
- Line up the die over the traced line, then cut the die. **4**
- Carefully peel off the recycled paper from the back of the panel. **5**
- Attach Stampin' Dimensionals to the back of each cut out and peel the backing off each dimensional.
- Carefully line up the Press 'n Seal panel over the card base and attach. **6**
 - Tip: See the video for a tip on how to use the Silicon Mat to make lining up easier.
- Trim off the overhang on the edges with Scissors.
- Assemble card base and panels with Seal Adhesive & Dimensionals.
- Attach Sparkle Dot embellishments



Painterly Pears Floating Frame Card

Tami White
tami@stampwithtami.com
www.stampwithtami.com



Painterly Pears
Suite Collection
(English) - 166159



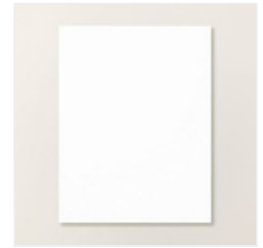
Perfectly Pears
Bundle (English) -
166154



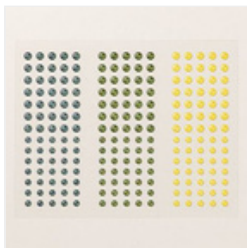
Tuxedo Black
Memento Ink Pad -
132708



Painterly Pears 12"
X 12" (30.5 X 30.5
Cm) Designer
Series Paper -
166146



Basic White 8-1/2"
X 11" Cardstock -
166780



Low Profile
Sparkle Dots -
166157



Stampin'
Dimensionals -
104430



Paper Trimmer -
152392



Stampin' Cut &
Emboss Machine -
149653



Textured Notes
Dies - 165555



ADDITIONAL SUPPLIES

Pen/Pencil & Recycled Printer Paper

Glad - Press 'n Seal

