



Tami White
tami@stampwithtami.com
www.stampwithtami.com



Floating Flower Fold Card

INSTRUCTIONS

CARD BASES:

- **BASIC BLACK CARD BASE:** 11" X 4-1/4"
 - Scored in half at 5-1/2"
- **WINDOW SHEET:** 5-3/8" x 4-1/8"
- 5-1/2" X 4-1/4" layers in Basic White, Pretty Peacock & Basic Black to cut with Textured Notes Dies

INSTRUCTIONS

- Stamp the words on a label from the kit.
- Using the Stampin' Cut & Emboss Machine & Textured notes dies cut the following:
 - Basic Black Frame: Cut the largest 2 dies (1 inside the other) to create a frame layer.
 - Pretty Peacock Frame: Cut the 3rd 4th Largest dies to create a frame layer.
 - Basic White: Cut with the largest die.
 - Cut the center out of the front of the card base with the 4th largest die.



ASSEMBLY

- Attach the Window Sheet to the back of the window cut out of the front of the card base.
- Attach the Pretty Peacock frame to the front.
- Attach the black frame over the Pretty Peacock frame with Foam Strips.
- Attach the flower die cut from the kit to the front with Foam Strips (or Dimensionals).
- Use a Bone folder to loosen the fibers of the banner and attach to the corner.
- Attach die cut accents to the inside and sequins on the outside.

Scan to learn more about
 Paper Pumpkin Subscriptions



Floating Flower Paper Pumpkin Card

Tami White
tami@stampwithtami.com
www.stampwithtami.com



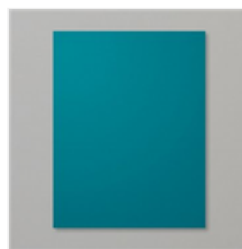
Paper Pumpkin
Subscription -
166815



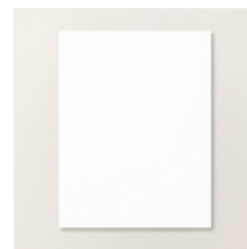
Full Of Charm
Paper Pumpkin
Refill - 167281



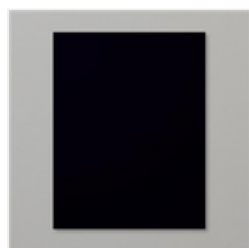
Pretty Peacock
Classic Stampin'
Pad - 150083



Pretty Peacock 8-
1/2" X 11"
Cardstock -
150880



Basic White 8-1/2"
X 11" Cardstock -
166780



Basic Black 8-1/2"
X 11" Cardstock -
121045



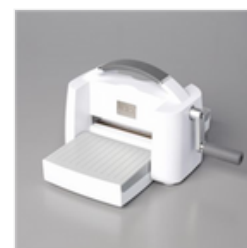
Window Sheets -
142314



Textured Notes
Dies - 165555



Paper Trimmer -
152392



Stampin' Cut &
Emboss Machine -
149653



Stampin' Seal -
152813



Foam Adhesive
Strips - 141825

