



BEAUTIFUL GALLERY CARD

CARD BASE:

- MOSSY MEADOW CARD BASE: 11" X 4-1/4"
 - Scored in half at 5-1/2"
- DESIGNER PAPER: 5-1/2" X 4-1/4"
- BASIC BEIGE INSIDE: 5-1/4" X 4"

INSTRUCTIONS

- Using the Stampin' Cut & Emboss Machine Cut:
 - The frame from Early Espresso Cardstock
 - Label for the words from Basic Beige
 - Foliage from Mossy Meadow, Early Espresso & Oxidized Copper
- Stamp the words in Early Espresso
- Tie the Beige Classic Ribbon in a bow around the frame.
- Assemble the card with Seal Adhesive and Stampin' Dimensionals.
- Attach Pressed Flower Embellishments.



Beautiful Gallery Card

Tami White
 tami@stampwithtami.com
 www.stampwithtami.com

BEAUTIFUL GALLERY SUITE

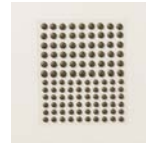
Pre-Order Products coming out May 6



Beautiful Motifs Bundle



Gallery Blooms Bundle



Pressed Flowers Motifs Embellishments



Beautiful Gallery Designer Series Paper



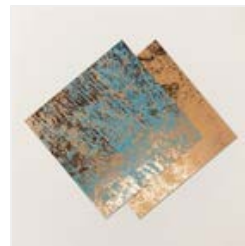
Early Espresso
 Classic Stampin'
 Pad - 147114



Mossy Meadow 8-
 1/2" X 11"
 Cardstock -
 133676



Basic Beige 8-1/2"
 X 11" Cardstock -
 164511



Oxidized Copper
 12" X 12" (30.5 X
 30.5 Cm) Specialty
 Designer Series
 Paper - 162190



Basic Beige 3/8" (1
 Cm) Bordered
 Ribbon - 163788



Paper Trimmer -
 152392



Stampin' Cut &
 Emboss Machine -
 149653



Stampin' Seal -
 152813



Stampin'
 Dimensionals -
 104430

