



DIY GIFT CARD HOLDERS AND TREAT PACKAGING

GIFT CARD HOLDERS

CUTS

- 8-1/2" X 5-1/2" Score at 2-3/4" & 6-3/4"
- Designer Series Paper:
 - 5-1/4" x 2-1/2" and (2) 5-1/4" x 1-1/2"
- Basic White Inside: 5-1/4" x 3-3/4"
- Belly Band: 12" x 1"



INSTRUCTIONS

- Die cut the label
- Stamp the words in Memento Black ink on the label.
- Assemble the gift card holder.
- Wrap Belly Band around the card and attach ends together.
- Attach label and Drusy embellishments.

TREAT BAGS

- Large Treat Bag from the Gift Bags Combo.
- I embossed the top half of the bag with the So Swirly folder. Due to the fold in the bottom of the bag I wasn't able to do the whole bag.
- Attach 4-1/4" x 2" Designer Paper to the bottom.
- Color the white ribbon with Old Olive Stampin' Blends Markers so it matches and attach.
- Fold over the top of the bag and attach Drusy Embellishments.
- Create and attach bow (see bow instructions).





HOW TO MAKE THE PIZZA BOX

TEMPLATE

BOX CUTS

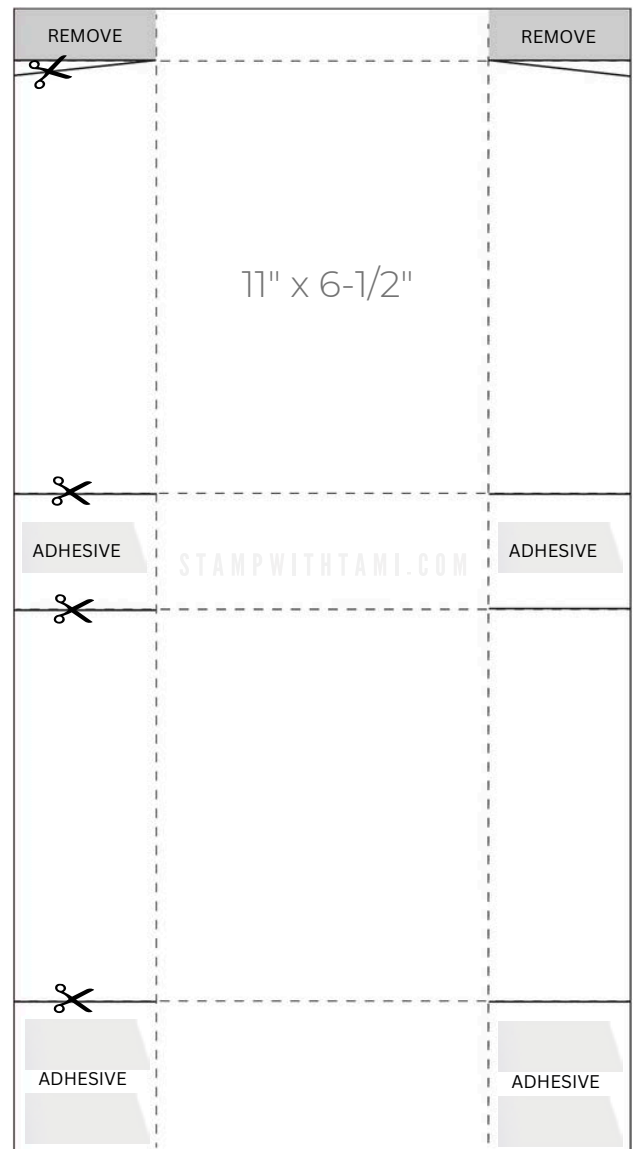
- Box Base: 11" x 6-1/2"
- Score on the short side at 1-1/2" on both sides
- Score on the long side at 1-1/2", 5-1/4", 6-3/4" & 10-1/2"
- Cut on the solid lines.

DESIGNER PAPER

- Top: 3-3/8" x 3-1/4"
- Sides: (2) 3-5/8" x 1-5/8"
- Sides: (2) 3-3/8" x 1-3/8"

INSTRUCTIONS

- Basic Black Box Base: 11" x 6-1/2"
 - Score on the short side at 1-1/2" on both sides.
 - Score on the long side at 1-1/2", 5-1/4", 6-3/4" & 10-1/2"
 - Cut on the solid lines of the template.
 - Assemble the box with Seal +.
- Attach Box Designer Paper with Seal Adhesive"
 - Top: 3-3/8" x 3-1/4"
 - Sides: (2) 3-5/8" x 1-5/8"
 - Sides: (2) 3-3/8" x 1-3/8"
- Die cut the label from the Iconic Imagery dies and stamp the words on it.
- Create the box (see bow instructions).
- Attach the tag, bow and Drusy embellishments to the box.

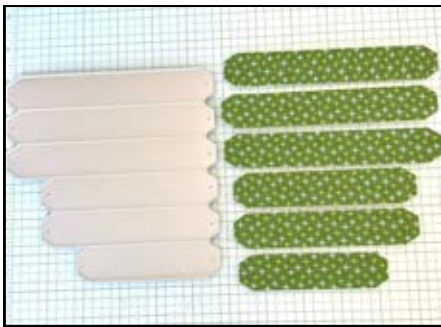


See video on my blog post for help.





HOW TO MAKE THE BOW



Die cut designer paper with the Take a Bow Dies twice.



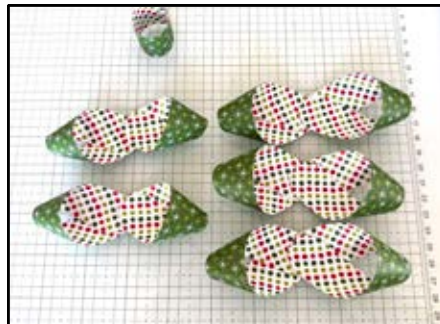
Create Bow loops with the 10 largest strips. Use either a Mini Glue Dot or Seal + Adhesive to attach.



There is 1 small strip in the die, this is for the center wrap piece. You only need 1 so there will be 1 small strip left over.



Assembled bow loops.



Attach 2 tails of the same sized bow loops together. Repeat until you have 5. 2 small and 3 large.



Attach the 3 larger bow loops together to create the base. Attach the 2 smaller bow loops together to create the middle layer. (see photo).



Attach the middle layer inside the center of the base layer. The Insert the center wrap.



Take a Bow Gift Packaging & Gift Card Holders

Tami White
tami@stampwithtami.com
www.stampwithtami.com



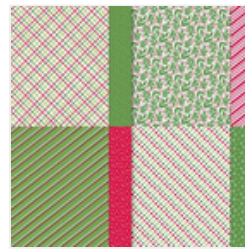
Iconic Imagery
Bundle (English) -
164201



Iconic Imagery
Photopolymer
Stamp Set
(English) - 164194



Take A Bow
Bundle - 165129



Take A Bow 6" X
6" Designer
Series Paper -
164309



Take A Bow Die -
164102



Gift Bags Combo
Pack - 164922



Basic White 8-1/2"
X 11" Cardstock -
159276



Garden Green 8-
1/2" X 11"
Cardstock -
102584



Drusy Adhesive-
Backed
Embellishments -
164223



Basic Black 8-1/2"
X 11" Cardstock -
121045



So Swirly
Embossing Folder
- 163791



Old Olive Stampin'
Blends Combo
Pack - 154892



Petal Pink & White
1/4" (6.4 Mm)
Diagonal Trim
Combo Pack -
163417



Paper Trimmer -
152392



Stampin' Cut &
Emboss Machine -
149653



Stampin' Seal -
152813



Stampin' Seal+ -
149699

