



SEE VIDEO ON MY BLOG POST FOR THE FOLD & COLORING TIPS

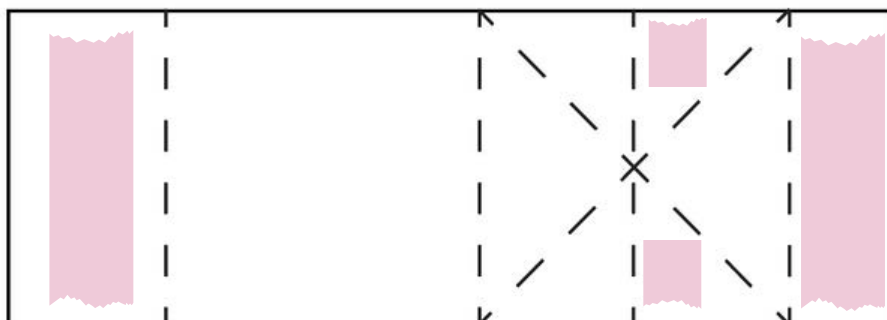
CUTS

- Basic White Card Base: 8-1/2" x 5-1/2" scored in half
- Printed Card Front: 5-1/2" x 4-1/4"
- Basic White Pop Up Mechanism: 4-1/4" x 1-1/2"
 - Score at 1/2", 1-1/4", 2" & 3-1/2"
- Inside DSP Front: 5-1/2" x 5-1/4" scored at 3-1/4"
- Inside DSP Back: 5-1/4" x 1-3/4"
- White Inside Printed Squares: (2) 2-1/2" x 2-1/2"
- Designer Paper Squares: (2) 2-1/4" x 2-1/4"

Printed Panels are cut from the card bases in the kit.

INSTRUCTIONS

- Front of the card:
 - I cut the elephant die cuts apart.
 - Attach printed tent layer to the front of the card .
 - Assemble the elephants, stand and die cut words.
- Inside of the card:
 - Attach the printed layers to the inside of the card base.
 - Attach Pop Up Mechanism to the inside of the card.
 - Attach the square layers and die cuts, then attach to the pop up mechanism.
 - Attach the blue strip and lion stand are from the envelope.
- Attach stars from the kit.



POP UP MECHANISM
 4-1/4" x 1-1/2"
 Score at 1/2", 1-1/4", 2" & 3-1/2"

; THIS FOLD



Circus Celebration Flash Pop Up

Tami White
tami@stampwithtami.com
www.stampwithtami.com



164374

CIRCUS CELEBRATION KIT

\$14.00



Basic White 8-1/2"
X 11" Cardstock -
159276



Stampin' Seal -
152813



Paper Trimmer -
152392



Paper Snips
Scissors - 103579



Stampin'
Dimensionals -
104430

