

PLAYFUL GHOSTS ACCORDION Z FOLDS SEE VIDEO ON MY BLOG FOR FOLD TIPS

CARD CUTS

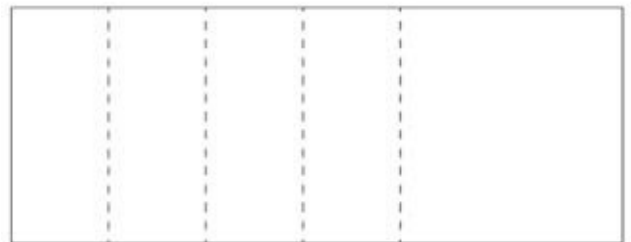
- **Basic Black Card Base #1:** 11" x 5-1/2"
 - Score at 1-3/4", 3-1/2", 5-1/4" & 7"
- **Basic Black Card Base #2:** 6-1/2" x 3-1/4"
 - Score at 3-1/4"
- **Designer Paper:** (4) 5-1/4" x 1-1/2"
- **Basic White Inside:** 5-1/4" x 3-3/4"
- **Pumpkin Pie for Z Fold:** (2) 3" x 3"
- **Basic White for Z Fold:** (2) 2-3/4" x 2-3/3"

INSTRUCTIONS

- Stamp the words and bats on the front and inside panels in Basic Black.
- Stamp the 2 ghost images on Basic White scrap paper and color with Stampin' Blends Markers.
- Assemble the Designer paper and card stock panels to the 2 card bases.
- Attach the 2 card bases together.
- Attach 2 2 ghosts with Stampin' Dimensionals.
- Attach the Sparkle Gems.

TEMPLATES

Cardbase #1: 11" X 4-1/4"
Score at 1-3/4", 3-1/2", 5-1/4" & 7"



Cardbase #2 - Z Fold
See measurements above



Playful Ghosts Accordion Z Fold

Tami White
tami@stampwithtami.com
www.stampwithtami.com



Playful Ghosts Cling Stamp Set (English) - 164366



Tuxedo Black Memento Ink Pad - 132708



Blackberry Bliss Stampin' Blends Combo Pack - 154877



Petunia Pop Stampin' Blends Combo Pack - 163828



Daffodil Delight Stampin' Blends Combo Pack - 154883



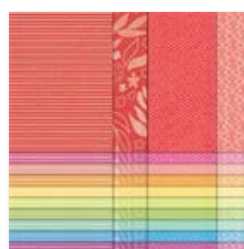
Pumpkin Pie Stampin' Blends Combo Pack - 154897



Lemon Lime Twist Stampin' Blends Combo Pack - 161682



Smoky Slate Stampin' Blends Combo Pack - 154904



Brights 6" X 6" (15.2 X 15.2 Cm) Designer Series Paper - 163775



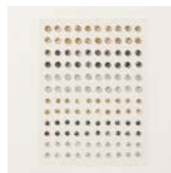
Basic Black 8-1/2" X 11" Cardstock - 121045



Basic White 8-1/2" X 11" Cardstock - 159276



Pumpkin Pie 8-1/2" X 11" Cardstock - 105117



Adhesive-Backed Sparkle Gems - 161288



Paper Snips Scissors - 103579



Stampin' Seal - 152813



Stampin' Dimensionals - 104430



Paper Trimmer - 152392

