



By Your Side Dog Card

### CARD CUTS

- Crumb Cake Card Base: 8-1/2" x 5-1/2" Score in half
- Old Olive: 5-1/4" x 4"
- Old Olive: 5" x 3-3/4"
- Basic White Inside: 5-1/4 "x 4"

### INSTRUCTIONS

- Using the Stampin' Cut and Emboss Machine:
  - Cut the long label die twice 3/4 of the down the front Old Olive Panel for the track.
  - Cut the smaller rectangle die from white for the words.
  - Emboss the background of the front Old Olive panel with the Exposed Brick Folder.
- Stamp the words on the die cut label.
- Make a Penny/Washer sandwich with dimensionals. Then attach the pennies/washers to the back of the die cut kitty from the kit.
- Attach the kitty to the track.
- Attach the Card base panels.
- Attach Foam Adhesive strips to the back of the panel, then attach to the card.
- Attach embellishments.



# By Your Side Spinner

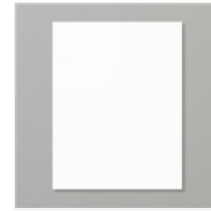
Tami White  
 tami@stampwithtami.com  
 www.stampwithtami.com



Old Olive 8-1/2" X 11" Cardstock - 100702



Tuxedo Black Memento Ink Pad - 132708



Basic White 8-1/2" X 11" Cardstock - 159276



Crumb Cake 8-1/2" X 11" Cardstock - 120953

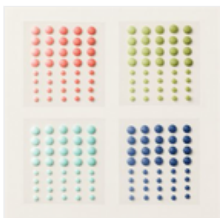


Wonderful Thoughts Dies (English) - 161491



Exposed Brick 3D Embossing Folder - 161600

**You will also need 2 pennies or washers**



Ombre Matte Decorative Dots - 161448



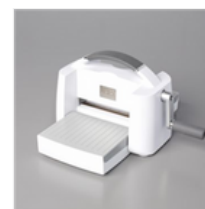
Foam Adhesive Strips - 141825



Stampin' Seal - 152813



Stampin' Dimensionals - 104430



Stampin' Cut & Emboss Machine - 149653



Paper Trimmer - 152392

**101:** getting started card making  
 MADE EASY  
 CLICK FOR THE ULTIMATE GUIDE  
 stampwithtami.com

FREQUENT BUYER POINTS  
**EARN FREE STAMPS**  
 TAMI'S CUSTOMER LOYALTY PROGRAM  
 stampwithtami.com

TAKE YOUR PICK TOOL  
**FREE**  
 WHEN YOU JOIN MY  
**VIP**  
 ONLINE CLUB  
 STAMPWITHTAMI.COM

