

PAINTED PETALS GIFT SET



SEE VIDEO ON MY BLOG FOR TRELLIS CARD

TRELLIS CARD

- Basic Gray Card Base: 8-1/2" x 4-1/4"
 - Scored at 5-1/2"
- Print from Envelope Inside: 5-1/2" x 4-1/4"
- Wood Texture for Front: 4-1/4" x 3"
- Wood Horizontal Strips: (4) 4-1/4" x 3/8"
- Wood Vertical Strips: (2) 3-1/2" x 3/8"
- Label and flowers from kit

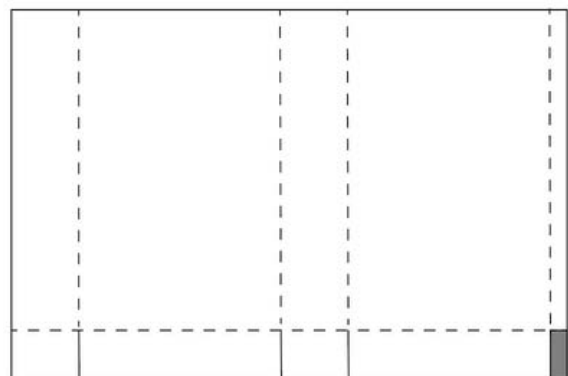
INSTRUCTIONS

- Stamp the words on the label.
- Attach the 2 Vertical Strips to the card base.
- Attach the 4 Horizontal Strips to the card base.
- Attach the Wood Texture to the front of the card base above the strips.
- Attach the printed paper to the inside of the card with Seal Adhesive.
- Attach the flowers and labels with Stampin' Dimensionals.
- Attach sequins from the kit.

GIFT BOX

- Using a card base from the kit cut 1/4" off the long side (solid color) so card base = 8-1/4" x 5-1/2"
- Score the long side: 1", 4", 5" & 8"
- Score the short side (bottom): 3/4"
- Cut tabs as shown in the template and assemble.

8-1/4" x 5-1/2"



Printed Petals Gift Set

Tami White
tami@stampwithtami.com
www.stampwithtami.com



Prepaid Paper Pumpkin Subscription 1-Month - 137858



Gray Granite Classic Stampin' Pad - 147118



Basic White 8-1/2" X 11" Cardstock - 159276



Wood Textured 12" X 12" (30.5 X 30.5 Cm) Specialty Paper - 163770



Stampin' Dimensionals - 104430



Stampin' Seal+ - 149699

PPX VIDEOS
EXCLUSIVE PAPER PUMPKIN
ALTERNATIVE PROJECT VIDEOS EACH MONTH
FROM THE PPX CREW

101:
getting started card making
MADE EASY
CLICK FOR THE ULTIMATE GUIDE
stampwithtami.com

FREQUENT BUYER POINTS
EARN FREE STAMPS
TAMI'S CUSTOMER LOYALTY PROGRAM
stampwithtami.com

TAKE YOUR PICK TOOL
FREE
WHEN YOU JOIN MY
VIP
ONLINE CLUB
STAMPWITHTAMI.COM



Painted Petals Gift Set Photos

Tami White
tami@stampwithtami.com
www.stampwithtami.com



Get more alternates for the Painted Petals Paper Pumpkin kit on my blog post.

