



## FULL OF LIFE KITE POP UP CARD



SEE VIDEO ON MY BLOG POST FOR THE FOLD

### CARD BASE CUTS

- Summer Splash Card Base: 11" x 4-1/4" score in half
- In Color Glimmer Paper Card Base Frames: (2) 5-1/4" x 4"
- Basic White Front & Inside: (2) 5" x 3-3/4"

### KITE CUTS AND FOLDS

- Summer Splash Kite Pop Up Fold Mechanism: 10" x 4"
  - See diagram below for folding

### 4 Panel Cuts

- In Color Glimmer Front Kite Frames:
  - 2-3/4" x 1-3/4"
  - 1-3/4" x 1-3/4"
  - Cut both diagonally
- Pattern Paper Front Kite Panels:
  - 2-1/2" x 1-1/2"
  - 1-1/2" x 1-1/2"
  - Cut both diagonally

### Solid Inside Panels

- Pretty in Pink Inside Kite Shaped Frame: 4-3/4" x 3-3/4"
  - Mark long side 2-7/8" and short side 1-7/8" on both sides
  - Cut mark to mark to create the kite shape
- Basic White Inside Kite Shaped Frame: 4-1/2" x 3-1/2"
  - Mark long side 2-3/4" and short side 1-3/4"
  - Cut mark to mark to create the kite shape

### INSTRUCTIONS

- Cut and score all of the card panels.
- Using the Stampin' Cut & Emboss Machine emboss the background of the front white panel with the Dashing Designs folder.
- Assemble the card base panels.
- Assemble and attach the kite pop up panels.
- Attach die cuts and ribbon.
- Attach the Pearls.



# Life is Sweet Kite Pop Up

Tami White  
tami@stampwithtami.com  
www.stampwithtami.com



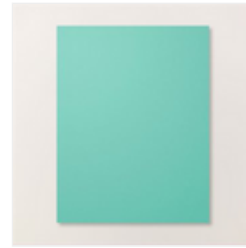
Life Is Sweet  
Paper Pumpkin  
Refill - 165002



Prepaid Paper  
Pumpkin  
Subscription 1-  
Month - 137858



2024-2026 In  
Color™ Glimmer  
12" X 12" (30.5 X  
30.5 Cm) Specialty  
Paper - 163771



Summer Splash 8-  
1/2" X 11  
Cardstock -  
163797



Pretty In Pink 8-  
1/2" X 11"  
Cardstock -  
163793



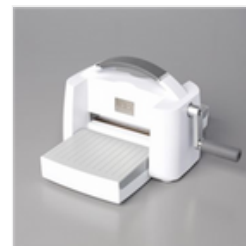
Basic White 8-1/2"  
X 11" Cardstock -  
159276



Pretty In Pink 3/8"  
(1 Cm) Bordered  
Ribbon - 163784



Dashing Designs  
3D Embossing  
Folder - 163483



Stampin' Cut &  
Emboss Machine -  
149653



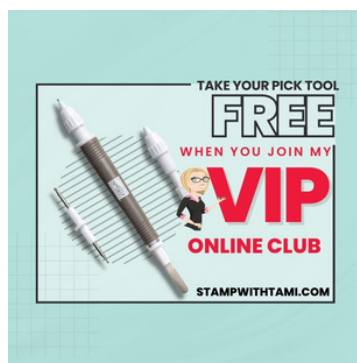
Paper Trimmer -  
152392



Stampin' Seal -  
152813



Stampin'  
Dimensionals -  
104430

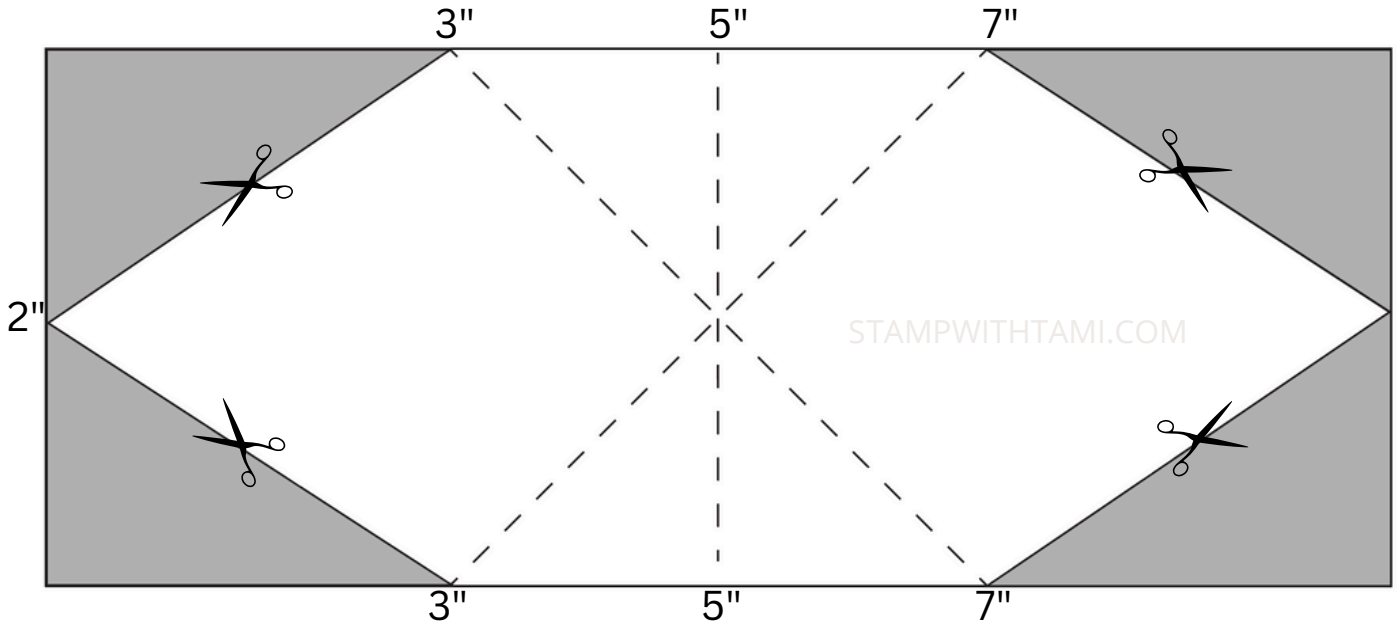




# Kite Pop Up CARD TEMPLATE

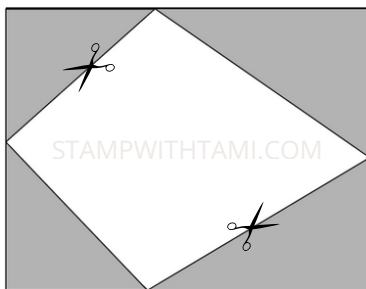
stampwithtami.com

## KITE POP UP MECHANISM



**10" X 4"**

Score Long Side at 5" and mark at 3" & 7"  
Score Diagonally from 3" to 7" on both sides  
Mark Short Both Short Sides at 2"  
Cut from 3" / 7" to 2" to create point



### Solid Diamond Panel Cutting

Kite Inside Frame: 4-3/4" x 3-3/4"

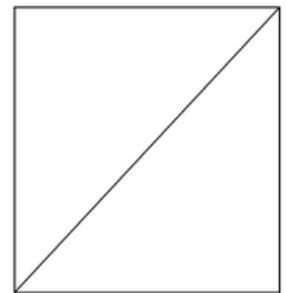
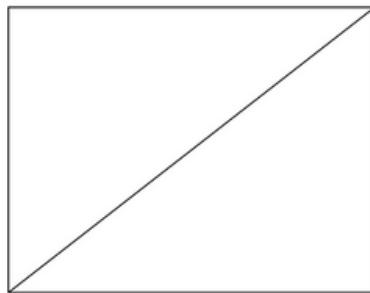
Mark long side 2-7/8" and short side 1-7/8" on both sides

Cut mark to mark to create the kite shape

Basic White Kite Inside: 4-1/2" x 3-1/2"

Mark long side 2-3/4" and short side 1-3/4"

Cut mark to mark to create the kite shape



### 4 Panel Front Cutting

- Frames:
  - 2-3/4" x 1-3/4"
  - 1-3/4" x 1-3/4"
  - Cut both diagonally
- Designer Paper Panels
  - 2-1/2" x 1-1/2"
  - 1-1/2" x 1-1/2"
  - Cut both diagonally

