



Tami White
 tami@stampwithtami.com
 www.stampwithtami.com

QUICK & EASY POP UP CARD WITH EPHEMERA PACKS



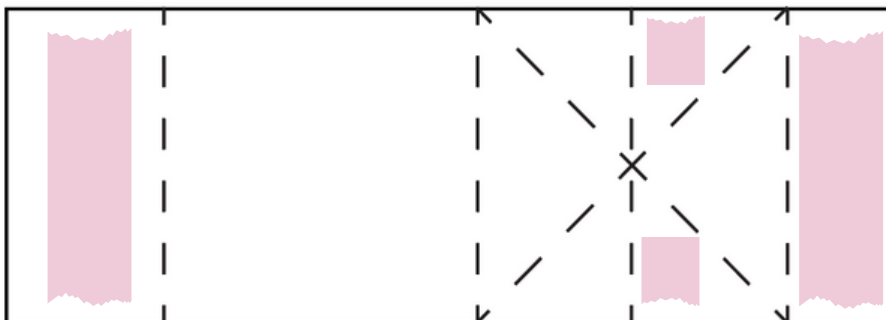
SEE VIDEO ON MY BLOG POST FOR THE FOLD

CUTS

- Card Base from Sunny Springs Pack
- Inside White Back: 8" x 5-1/4" scored in half
- Inside White Strip: 5-1/2" x 2-1/4"
- Basic White Pop Up Mechanism: 4-1/4" x 1-1/2"
 - Score at 1/2", 1-1/4", 2" & 3-1/2"

INSTRUCTIONS

- Cut the label for the front with the Wildflower Designs Dies.
- Assemble the squares and attach to the pop up mechanism.
- Attach Pop Up Mechanism to the inside of the card.
- Assemble the card.
- Attach embellishments.



POP UP MECHANISM

4-1/4" x 1-1/2"

Score at 1/2", 1-1/4", 2" & 3-1/2"



Ephemera Flash Pop Up

Tami White
tami@stampwithtami.com
www.stampwithtami.com



Fully Flowering Mix & Match Ephemera Pack - 163762



Saying Something Mix & Match Ephemera Pack (English) - 163761



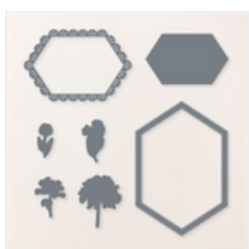
Sunny Springs Mix & Match Cards & Envelopes - 163754



Basic White 8-1/2" X 11" Cardstock - 159276



2024-2026 In Color™ Shimmer Gems - 163781



Wildflower Designs Dies - 163333



Stampin' Cut & Emboss Machine - 149653



Paper Trimmer - 152392



Stampin' Seal - 152813



Stampin' Seal+ - 149699



Stampin' Dimensionals - 104430

