



SKETCHED BUTTERFLIES FLASH POP UP CARD



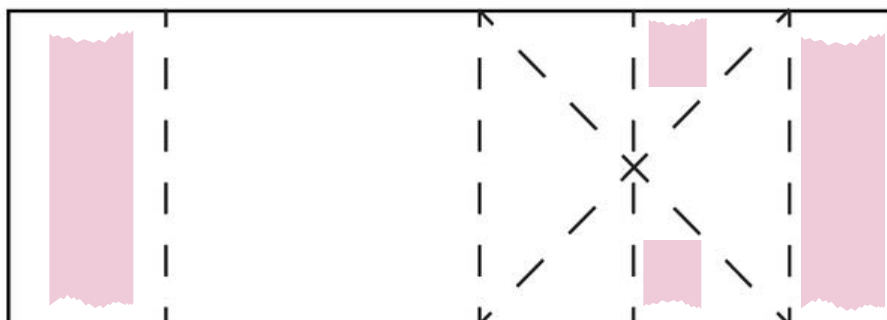
SEE VIDEO ON MY BLOG POST FOR THE FOLD & COLORING TIPS

CUTS

- Basic White Card Base: 8-1/2" x 5-1/2"
 - scored in half
- Front Mossy Meadow: 5-1/4" x 4"
- Front Designer Paper: 5-1/8" x 3-7/8"
- Inside Basic White Squares: (2) 2-1/2" x 2-1/2"
- Inside Basic White Strip: 5-1/2" x 2-1/4"
- Inside Designer Paper: 5-1/2" x 5-1/4"
- Inside Designer Paper Back: 5-1/4" x 1-3/4"
- Inside Designer Paper Squares: (2) 2-1/4" x 2-1/4"
- Basic White Pop Up Mechanism: 4-1/4" x 1-1/2"
 - Score at 1/2", 1-1/4", 2" & 3-1/2"

INSTRUCTIONS

- Stamp words in Blackberry Bliss Ink.
- Stamp butterflies on Basic White Scrap paper and color with Stampin' Blends Markers.
- Die Cut butterflies. Optional: Curl wings with Bone Folder.
- Assemble and attach the squares & inside strip to the Pop Up Mechanism.
- Attach Pop Up Mechanism to the inside of the card.
- Assemble the rest of the card.



POP UP MECHANISM

4-1/4" x 1-1/2"

Score at 1/2", 1-1/4", 2" & 3-1/2"



Sketched Butterflies

Tami White
tami@stampwithtami.com
www.stampwithtami.com



Sketched Butterflies Bundle (English) - 163492



Sketched Butterflies Cling Stamp Set (English) - 163490



Sketched Butterflies Dies - 163491



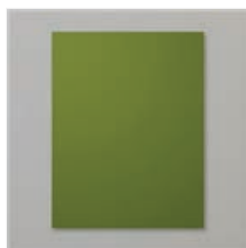
Tuxedo Black Memento Ink Pad - 132708



Blackberry Bliss Classic Stampin' Pad - 147092



Thoughtful Journey 6" X 6" (15.2 X 15.2 Cm) Designer Series Paper - 163303



Mossy Meadow 8-1/2" X 11" Cardstock - 133676



Basic White 8-1/2" X 11" Cardstock - 159276



Blackberry Bliss Stampin' Blends Combo Pack - 154877



Berry Burst Stampin' Blends Combo Pack - 161681



Daffodil Delight Stampin' Blends Combo Pack - 154883



Smoky Slate Stampin' Blends Combo Pack - 154904



Pretty In Pink Stampin' Blends Combo Pack - 163824



Stampin' Cut & Emboss Machine - 149653



Paper Trimmer - 152392



Stampin' Seal - 152813



Stampin' Seal+ - 149699



Stampin' Dimensionals - 104430

