



TRUSTY TOOLS ENVELOPE CARD BOX



SEE VIDEO TUTORIAL

BOX PANELS

- Early Espresso Box Back: 5" x 7"
- Early Espresso Box Bottom: 4" x 7"
- Early Espresso Box Sides: (2) 3-1/2" x 3-1/2"
- Early Espresso Pop Up for behind tool box 2-1/2" x 1" score at ever 1/2"

- See the Template for cuts and scoring
- To make a full card add a card base 8" x 9" scored in half and attached to the back.

DESIGNER SERIES PAPER

- Box Back: 6" x 4-3/4"
 - Mark top and sides at 2-3/8" & cut
- Box Bottom: 4-3/4" x 2-1/4"
 - Mark top 2-3/8" and on short sides 7/8" from the bottom and top. Cut to top on either side
- Box Sides: (2) 1-3/4" x 3-1/4"
 - Mark top 1-5/8" and on short sides 3/8" from the bottom and top. Cut top top on either side

INSTRUCTIONS

- Stamp words and images you'd like to use. Color the images with Stampin' Blends Markers.
- Using the Stampin' Cut & Emboss Machine:
 - Cut the tool pieces with the Trusty Tools Dies.
 - Cut the background Crumb Cake with the "peg board" pattern.
 - Emboss the tool box with the Timber Folder and the Box front and sides with the Metal Plate Folder.
- Instead of a crossbar in the bottom of the box, I used the pop up to hold the tool box and hung the tools off the box.
- Assemble the box with Seal +.
 - See video for help with box assembly. See templates and cutting guide.
 - Attach the die cuts to the strips and then to the crossbar.
- Optional: Attach the card base to the back.



Trusty Tools Envelope Card Boxes

Tami White
tami@stampwithtami.com
www.stampwithtami.com



CLICK FOR MAILERS OR GET THE LINK ON THE PROJECT PAGE



Trusty Tools Envelope Card Box

Tami White
 tami@stampwithtami.com
 www.stampwithtami.com



Trusty Tools Bundle (English) - 162723



Trusty Tools Photopolymer Stamp Set (English) - 163274



Trusty Tools Dies - 162722



Tuxedo Black Memento Ink Pad - 132708



Pecan Pie Classic Stampin' Pad - 161665



Gray Granite Classic Stampin' Pad - 147118



Daffodil Delight Stampin' Blends Combo Pack - 154883



Real Red Stampin' Blends Combo Pack - 154899



Pretty Peacock Stampin' Blends Combo Pack - 161676



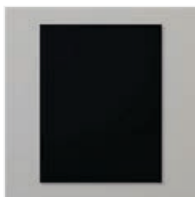
Lost Lagoon Stampin' Blends Combo Pack - 161680



Smoky Slate Stampin' Blends Combo Pack - 154904



Sponge Daubers - 133773



Basic Black 8-1/2" X 11" Cardstock - 121045



Basic White 8-1/2" X 11" Cardstock - 159276



Pecan Pie 8-1/2" X 11" Cardstock - 161717



Early Espresso 8-1/2" X 11" Cardstock - 119686



Crumb Cake 8-1/2" X 11" Cardstock - 120953



Basic Gray 8-1/2" X 11" Cardstock - 121044



Enduring Beauty Dies - 162672



Metal Plate 3D Embossing Folder - 160766



Timber 3D Embossing Folder - 156406



Stampin' Cut & Emboss Machine - 149653



Paper Trimmer - 152392



Stampin' Seal - 152813

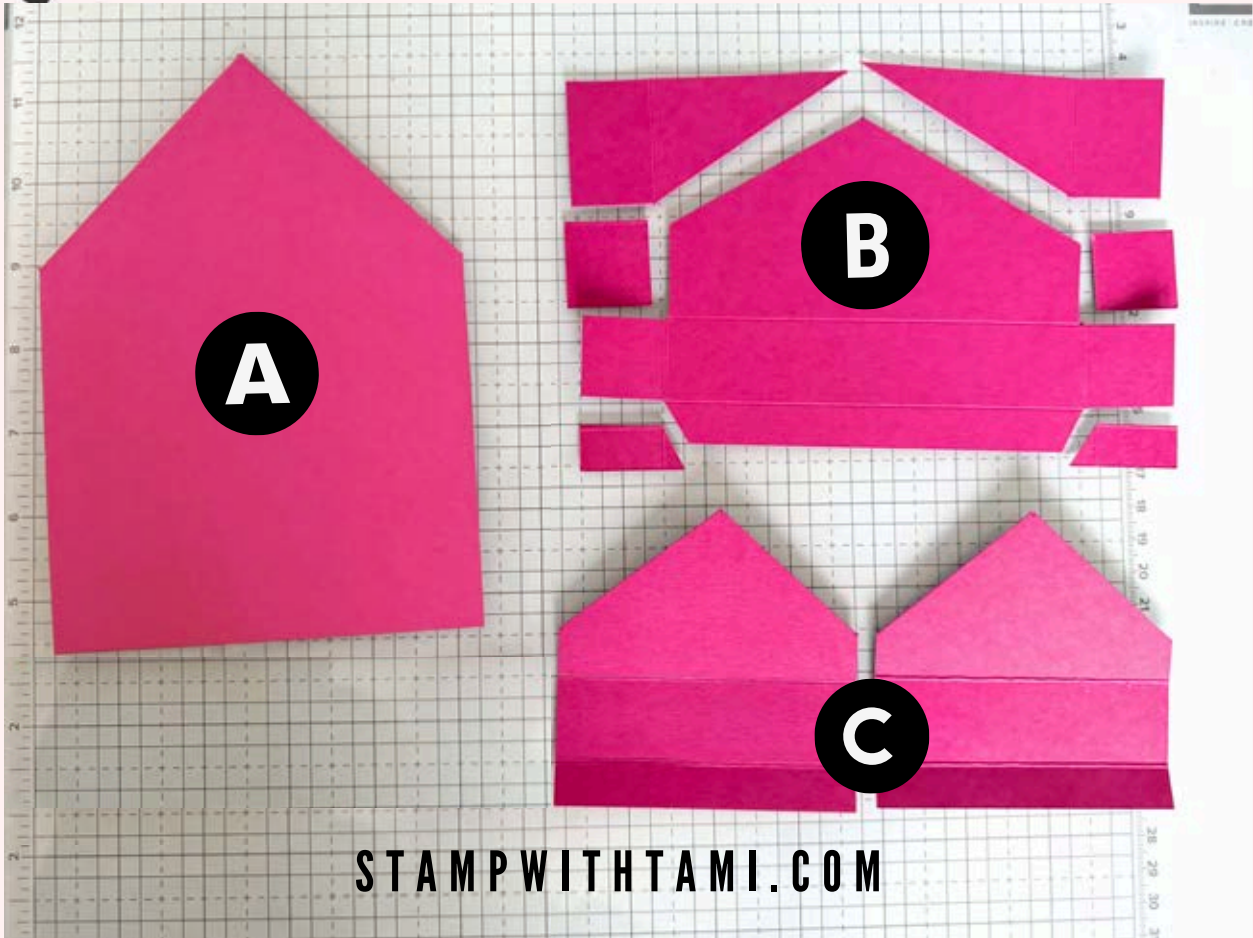


Stampin' Seal+ - 149699





Envelope Card Box TEMPLATE



STAMPWITHTAMI.COM

A BOX BACK: 5" X 7"

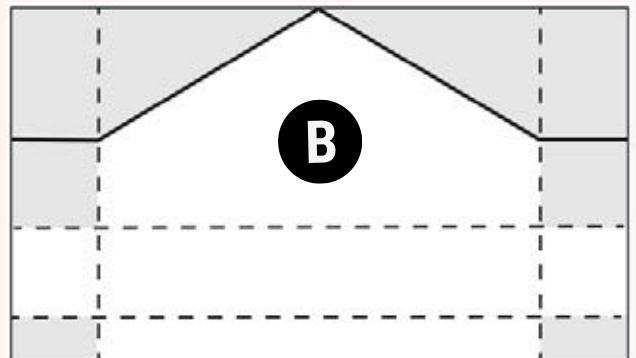
- Mark top at 2-1/2"
- Mark both sides down from the top at 2-1/2"
- Cut from the top mark to the side marks

C BOX SIDES: (2) 3-1/2" X 3-1/2"

- Score at 1/2" & 1-1/2"
- Mark both sides at 2"
- Mark the top at 1-3/4"
- Cut from the top mark to the side marks

B BOX BOTTOM: 4" X 7"

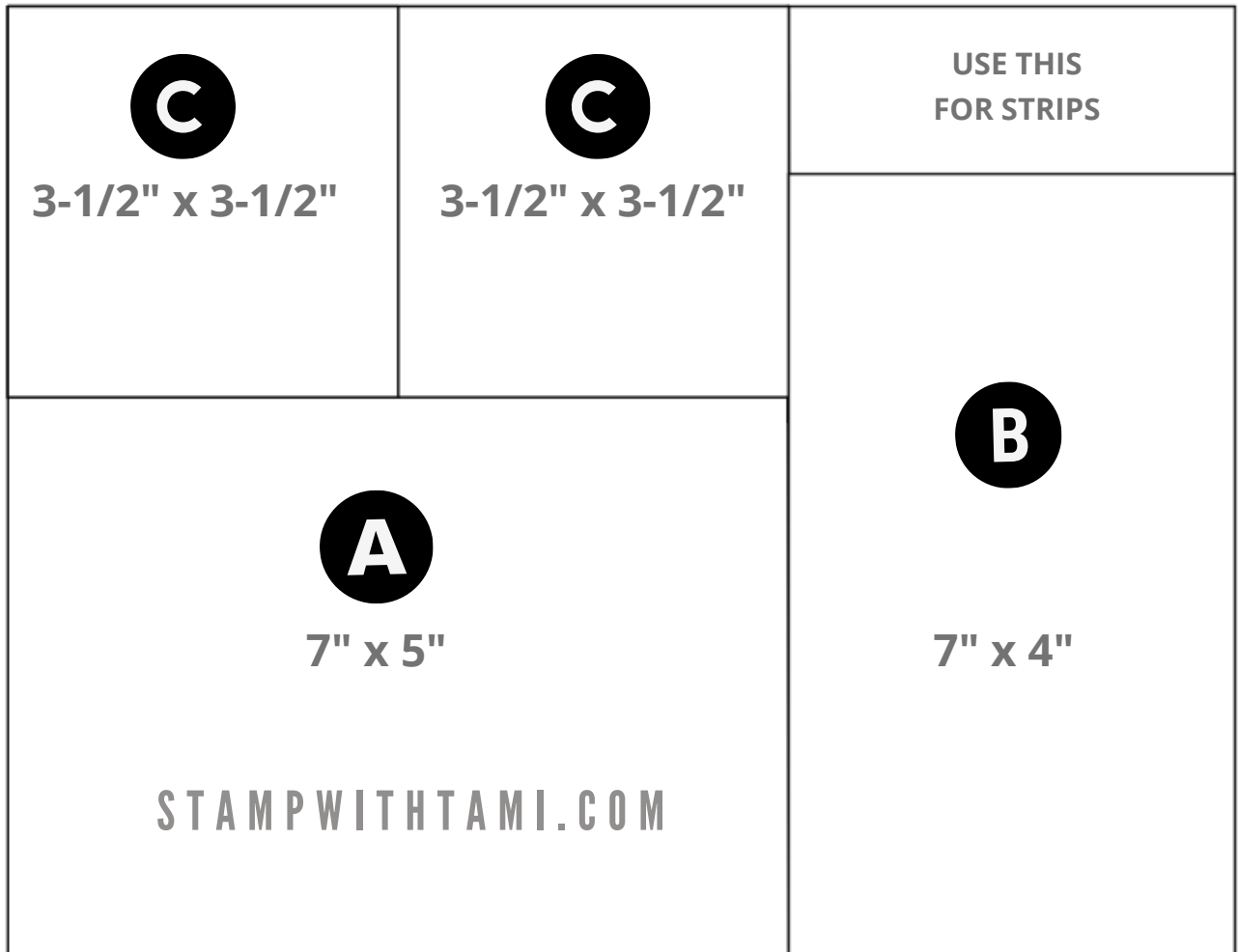
- Score on the long side: 1" & 6"
- Mark the top at 3-1/2"
- Score on the short side: 1/2" & 1-1/2"
- Cut on short side at 2-1/2" from the edge to the score line on both sides
- Cut tab off and from tab corner to mark at the top
- Cut bottom tabs off





Envelope Card Box

CARD BASE CUTTING GUIDE



8-1/2" X 11" CARDSTOCK

1. On the long side cut 7" x 8-1/2" **A**
2. Cut to (1) 5" x 7" and (2) 3-1/2" x 3-1/2" **C**
3. Cut remaining panel to 4" x 7" **B**

