

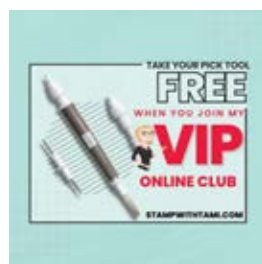


PAPER FLORIST SHADOWBOX DECOR



DETAILS

- 5" X 7" piece of Nature's Sweetness Designer Series Paper
- Die Cut all of the flower pieces
- Curl the leaves with a bone folder
- Assemble the flower pieces with Mini Glue Dots and Liquid Glue
- Color the Paper Butterfly with Stampin' Blends Markers
- Assemble and attach the frame pieces to the designer paper



Paper Florist Shadowbox

Tami White
tami@stampwithtami.com
www.stampwithtami.com



Paper Florist Dies -
161284



Nature's
Sweetness 12" X
12" (30.5 X 30.5
Cm) Specialty
Designer Series
Paper - 162616



Basic White 8-1/2"
X 11" Cardstock -
159276



Melon Mambo 8-
1/2" X 11"
Cardstock -
115320



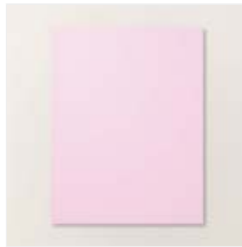
Daffodil Delight 8-
1/2" X 11"
Cardstock -
119683



Lemon Lime Twist
8-1/2" X 11"
Cardstock -
144245



Granny Apple
Green 8-1/2" X 11"
Cardstock -
146990



Bubble Bath 8-1/2"
X 11" Cardstock -
161718



Paper Butterfly
Accents - 162612



Daffodil Delight
Stampin' Blends
Combo Pack -
154883



Pebbled Path
Stampin' Blends
Combo Pack -
161658



Blooming Pearls -
162238



Bone Folder -
102300



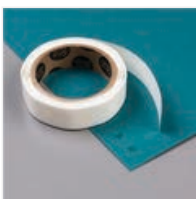
Take Your Pick -
144107



Stampin' Cut &
Emboss Machine -
149653



Multipurpose
Liquid Glue -
110755



Mini Glue Dots -
103683



Stampin'
Dimensionals -
104430



5" X 7" SHADOWBOX FRAME
ON AMAZON



Paper Florist Shadowbox

Tami White
tami@stampwithtami.com
www.stampwithtami.com

