



PAPER FLORIST ENVELOPE CARD BOX



SEE VIDEO TUTORIALS

BOX PANELS

- Box Back: 5" x 7"
- Box Bottom: 4" x 7"
- Box Sides: (2) 3-1/2" x 3-1/2"
- Cross Bar: 1" x 6"
- Strips for coffee: 1" x 3" or 1/2" x 3"
- Pop Ups: 1/2" x 2-1/2" scored at each 1/2"
- See the Template for cuts and scoring
- To make a full card add a card base 8" x 9" scored in half and attached to the back.

DESIGNER SERIES PAPER

- Box Back: 6-3/4" x 4-3/4"
 - Mark top and sides at 2-3/8" & cut
- Box Bottom: 4-3/4" x 2-1/4"
 - Mark top 2-3/8" and on short sides 7/8" from the bottom and top. Cut to top on either side
- Box Sides: (2) 1-3/4" x 3-1/4"
 - Mark top 1-5/8" and on short sides 3/8" from the bottom and top. Cut top top on either side
- Card back and inside: 4-1/4" x 4"

INSTRUCTIONS

- Using the Wonderful Thoughts stamp set and Blackberry Bliss Ink, stamp the words for the front and the back on Basic White Scrap paper.
- Using the Stampin' Cut & Emboss Machine:
 - Cut the words with the coordinating Wonderful Thoughts die.
 - Cut the desired flower and leaf pieces.
- Assemble the flowers with Mini Glue Dots and Stampin' Dimensionals.
- Assemble the box with Seal +.
 - See video for help with box assembly. See templates and cutting guide.
- Attach the card base to the back.
- Attach Iridescent Rhinestones and Paper Butterfly.



Sweet Springtime Envelope Card Boxes

Tami White
tami@stampwithtami.com
www.stampwithtami.com



MORE SWEET SPRINGTIME
PAPER PUMPKIN ALTERNATES



MAILERS FOR
ENVELOPE CARD BOXES

CLICK FOR MAILERS OR GET THE LINK ON THE
PROJECT PAGE



Paper Florist Envelope Card Box

Tami White
tami@stampwithtami.com
www.stampwithtami.com



Paper Florist Dies - 161284



Wonderful Thoughts Bundle (English) - 161494



Wonderful Thoughts Photopolymer Stamp Set (English) - 161899



Wonderful Thoughts Dies (English) - 161491



Blackberry Bliss Classic Stampin' Pad - 147092



Masterfully Made 12" X 12" Designer Series Paper - 161192



Blackberry Bliss 8- 1/2" X 11" Cardstock - 133675



Highland Heather 8- 1/2" X 11" Cardstock - 146986



Berry Burst 8-1/2" X 11" Cardstock - 144243



Bubble Bath 8-1/2" X 11" Cardstock - 161718



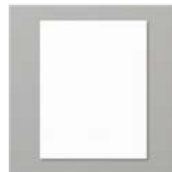
Crushed Curry 8- 1/2" X 11" Cardstock - 131199



Old Olive 8-1/2" X 11" Cardstock - 100702



Mossy Meadow 8- 1/2" X 11" Cardstock - 133676



Basic White 8-1/2" X 11" Cardstock - 159276



Paper Butterfly Accents - 162612



Purple Fine Shimmer Gems - 162611



Iridescent Rhinestones Basic Jewels - 158130



Mini Stampin' Cut & Emboss Machine - 150673



Paper Trimmer - 152392



Bone Folder - 102300



Take Your Pick - 144107



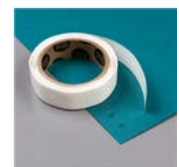
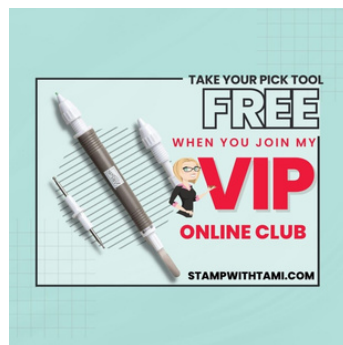
Stampin' Seal - 152813



Stampin' Seal+ - 149699



Stampin' Dimensionals - 104430

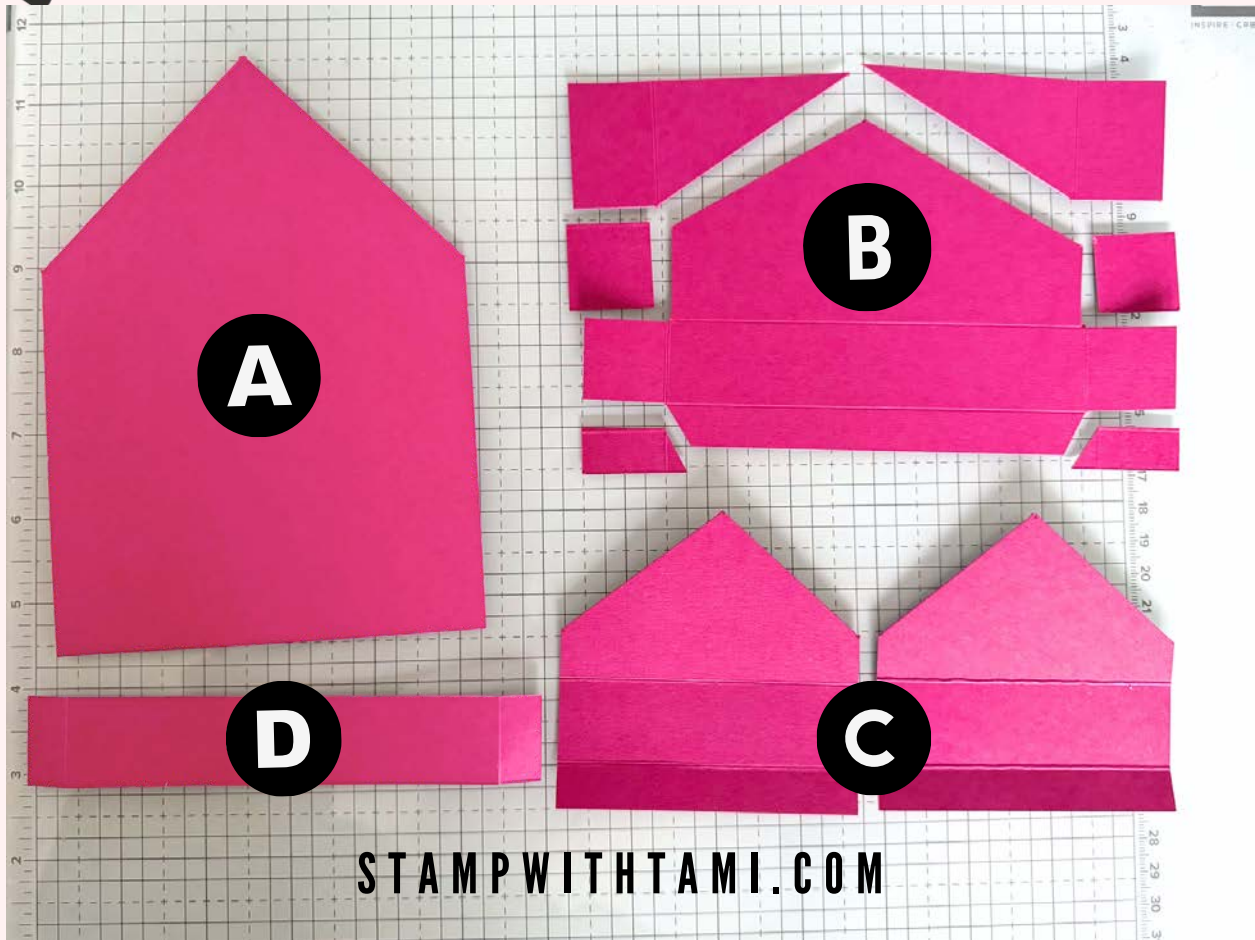


Mini Glue Dots - 103683





Envelope Card Box TEMPLATE



A BOX BACK: 5" X 7"

- Mark top at 2-1/2"
- Mark both sides down from the top at 2-1/2"
- Cut from the top mark to the side marks

C BOX SIDES: (2) 3-1/2" X 3-1/2"

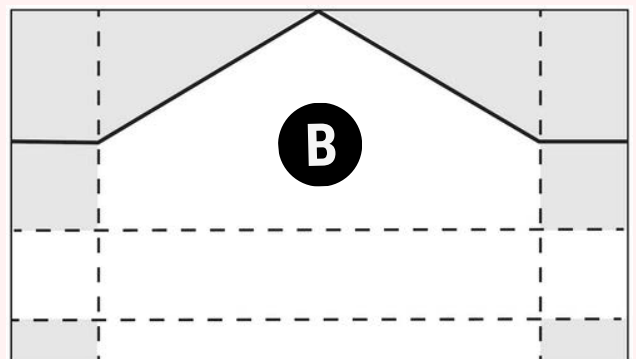
- Score at 1/2" & 1-1/2"
- Mark both sides at 2"
- Mark the top at 1-3/4"
- Cut from the top mark to the side marks

D CROSS BAR 1" X 6"

- Score at 1/2" on either side

B BOX BOTTOM: 4" X 7"

- Score on the long side: 1" & 6"
- Mark the top at 3-1/2"
- Score on the short side: 1/2" & 1-1/2"
- Cut on short side at 2-1/2" from the edge to the score line on both sides
- Cut tab off and from tab corner to mark at the top
- Cut bottom tabs off



STRIPS TO HOLD FLOWERS

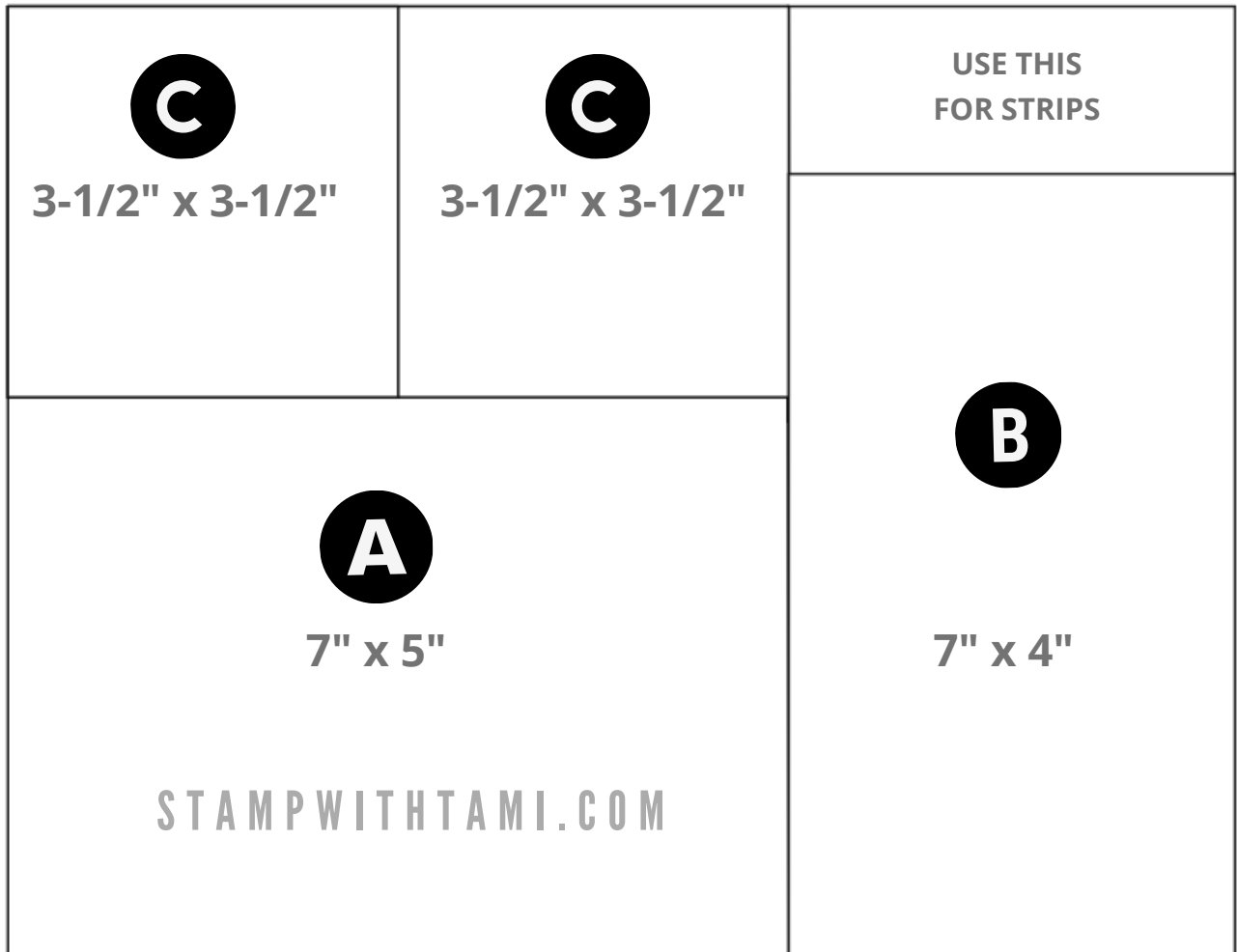
- 1/2" X 3" OR 1" X 3"





Envelope Card Box

CARD BASE CUTTING GUIDE



8-1/2" X 11" CARDSTOCK

1. On the long side cut 7" x 8-1/2" **A**
2. Cut to (1) 5" x 7" and (2) 3-1/2" x 3-1/2" **C**
3. Cut remaining panel to 4" x 7" **B**
4. Use left over section for strips
5. Cut 1" x 6" crossbar from another piece of card stock

