



LOVELY LAVENDER DOUBLE POCKET TAG CARD



CARD CUTS AND INSTRUCTIONS

- Perennial Lavender DSP Base: 11" x 8-1/2"
 - Scored in half on both the short and long side.
 - Fold per the template.
- Cut a polka dot strip 1-1/2" x 5-1/2", attach to the middle panel and cut off any overhang.
- Stamp the words on the label for the back.
- Die cut some foliage from Vellum and the Love of Spring Dies for the tags.
- Assemble the tags with the Vellum leaves, Paper Butterflies and die cuts from the kit.
- Attach the die cut word "love" from the kit and Paper Butterfly to the front.
- Attach Purple Gems.



More Lovely Lavender Tutorials on my blog!



Lovely Lavender Double Pocket Supplies

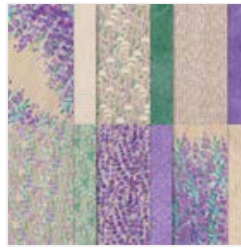
Tami White
tami@stampwithtami.com
www.stampwithtami.com



Prepaid Paper
Pumpkin
Subscription 1-
Month - 137858



Lovely Lavender
Paper Pumpkin
Refill - 164384



Perennial
Lavender 12" X
12" (30.5 X 30.5
Cm) Designer
Series Paper -
162593



Vellum 8-1/2" X
11" Cardstock -
101856



Basic White 8-1/2"
X 11" Cardstock -
159276



Paper Butterfly
Accents - 162612



Highland Heather
Classic Stampin'
Pad - 147103



Purple Fine
Shimmer Gems -
162611



Silver & White 1/2"
(1.3 Cm) Sheer
Ribbon - 162149



The Love Of
Spring Dies -
164396



Stampin' Cut &
Emboss Machine -
149653



Paper Trimmer -
152392



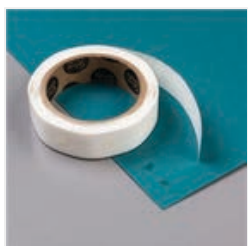
Take Your Pick -
144107



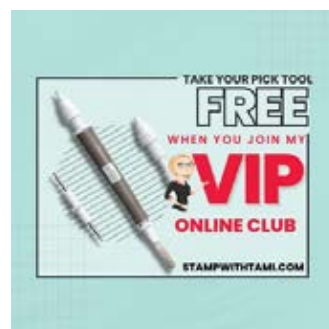
Stampin' Seal -
152813



Stampin'
Dimensionals -
104430



Mini Glue Dots -
103683





Double Pocket Fold

TEMPLATE



11" x 8-1/4" CARD BASE

- Score on the short side at 4-1/4" and the long side at 5-1/2".
- Cut on the left side score line to the center.
- From the upper left corner, mark in 3" and mark down 3". Score to connect the 2 marks. **A**
- On the lower right corner fold in so the edge meets the score line. **D**
- Fold **A** over **B**.
- Fold **D** panel up over **A** & **B**.
- Wrap **C** around to the back.

