



## JUNGLE PALS WREATH CIRCLE CARD



SEE VIDEO TUTORIAL & WREATH CARD SERIES FOR MORE

### CUTS

- Lemon Lime Twist Cardbase: 5-1/4" x 5-1/4" score in half at 2-5/8"
- Basic White Inside: 5" x 5" score in half at 2-1/2"
- Scraps Basic White, Old Olive Daffodil Delight, Pumpkin Pie and Early Espresso

### INSTRUCTIONS

- Stamp the alligator, sloth and toucan images and color with the Stampin' blends Markers.
- Stamp the words "Just swinging by to say hi" from the Little Monkey Stamp Set.
- Using the Stampin' Cut & Emboss Machine:
  - Cut the center of the Old Olive card base and Basic White inside panel with the Deckled Circles Die.
  - Make the circle frame with the 2 Deckled Circle Dies. Cut a 2nd circle frame to use on the back after attaching the die cuts.
  - Cut the colored images of the animals, and cut an additional of each from plain white for backings.
  - Cut the flowers, foliage and tree pieces from the die set.
- Attach the sloth hanging from the leaves to the back of one circle frame, then attach the 2nd circle frame to the back.
- Attach the circle frame to the card base with Seal +.
- Finish assembling the card pieces. Tip attach the 2nd white die cut of the animals to the back of each.
- Attach the inside panel of the card with Seal.
- Attach Glossy dots.



# Jungle Pals Circle Wreath Supplies

Tami White  
tami@stampwithtami.com  
www.stampwithtami.com



Jungle Pals Cling Stamp Set - 162950



Jungle Pals Dies - 162973



Little Monkey Photopolymer Stamp Set - 161372



Tuxedo Black Memento Ink Pad - 132708



Basic White 8-1/2" X 11" Cardstock - 159276



Early Espresso 8-1/2" X 11" Cardstock - 119686



Lemon Lime Twist 8-1/2" X 11" Cardstock - 144245



Old Olive 8-1/2" X 11" Cardstock - 100702



Daffodil Delight 8-1/2" X 11" Cardstock - 119683



Pumpkin Pie 8-1/2" X 11" Cardstock - 105117



Sweet Sorbet Stampin' Blends Combo Pack - 159224



Pumpkin Pie Stampin' Blends Combo Pack - 154897



Daffodil Delight Stampin' Blends Combo Pack - 154883



Lemon Lime Twist Stampin' Blends Combo Pack - 161682



Moody Mauve Stampin' Blends Combo Pack - 161660



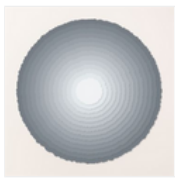
Highland Heather Stampin' Blends Combo Pack - 154887



Basic Black Stampin' Blends Combo Pack - 154843



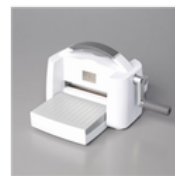
Glossy Dots Assortment - 158827



Deckled Circles Dies - 162286



Paper Trimmer - 152392



Stampin' Cut & Emboss Machine - 149653



Stampin' Seal - 152813



Stampin' Seal+ - 149699



Stampin' Dimensionals - 104430

