



## HANDCRAFTED ELEMENT CARD



### MEASUREMENTS

- Pretty Peacock Card Base: 8-1/2" x 5-1/2" scored in half
- Pretty Peacock: 5-1/4" x 4"
- Rose Gold: 5-1/8" x 3-7/8"
- Oxidized Copper: 5" x 3-3/4"
- Basic White (Inside): 5" x 3-3/4"
- Basic White: 2-1/4" x 1-3/4"
- Rose Gold: (2) 1/4" x 2-1/4"

### INSTRUCTIONS

- Stamp the words on the Basic White layer.
- Using the Stampin' Cut & Emboss Machine:
  - Cut the ornament die in Pretty Peacock.
- Assemble the ornament and tie the ribbon through the top.
  - Note: I added the Rose Gold strips to the top and bottom of the white for a reveal.
- Attach the ornament to the card and then attach the Pearls.



# Handcrafted Elements Card Set Supplies

Tami White  
tami@stampwithtami.com  
www.stampwithtami.com



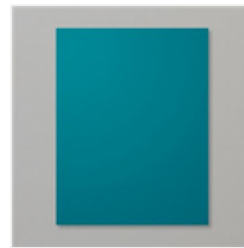
Christmas Classics  
Photopolymer  
Stamp Set  
(English) - 161970



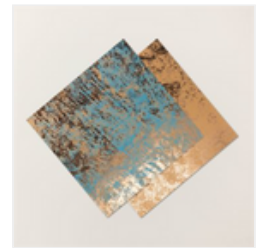
Handcrafted  
Elements Dies -  
162330



Pretty Peacock  
Classic Stampin'  
Pad - 150083



Pretty Peacock 8-  
1/2" X 11"  
Cardstock -  
150880



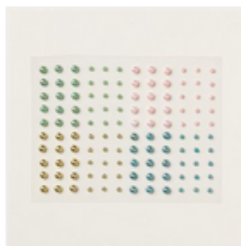
Oxidized Copper  
12" X 12" (30.5 X  
30.5 Cm) Specialty  
Designer Series  
Paper - 162190



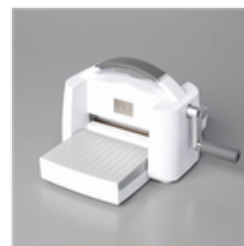
Rose Gold 12" X  
12" (30.5 X 30.5  
Cm) Specialty  
Paper - 159139



Copper & Natural  
Ribbon Combo  
Pack - 162192



Blooming Pearls -  
162238



Stampin' Cut &  
Emboss Machine -  
149653



Stampin' Seal -  
152813



Stampin'  
Dimensionals -  
104430



Basic White 8-1/2"  
X 11" Cardstock -  
159276

