



## HO HO HO SLIMLINE CARD



MERRY & BRIGHT SERIES

### MEASUREMENTS

- Sweet Sorbet Cardbase: 8-3/4" x 7-1/2" Scored at 3-3/4
- Parakeet Party: 8-3/4" x 2-3/4"
- Basic White: 8-3/4" x 2-1/2"
- Scraps: Gold Glimmer and Parakeet Textured Specialty Paper

### INSTRUCTIONS

- Using the Stampin' Cut & Emboss Machine Cut:
  - Gold Glimmer: Heart Light Insets x 3, Bulb Caps x 3 & strings of lights. The Gold Glimmer is self adhesive so you want need Adhesive Sheets on these.
  - Parakeet Textured: "H" x 3 and light bulbs x 3. Tips: attach Gold Glimmer to Adhesive Sheet first.
- Attach the white panel to the Parakeet Party with Seal Adhesive.
- Wrap 2 pieces of ribbon around the bottom of the panel.
- Finish assembling the card.



# Ho Ho Ho Slimline Supplies

Tami White  
tami@stampwithtami.com  
www.stampwithtami.com



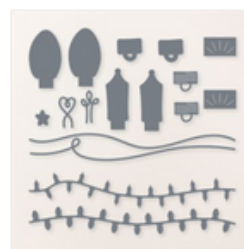
Merry Bold & Bright Suite Collection (English) - 161956



Merry & Bright Bundle (English) - 161951



Merry & Bright Photopolymer Stamp Set (English) - 161946



Merry & Bright Dies - 161950



Basic White 8-1/2" X 11" Cardstock - 159276



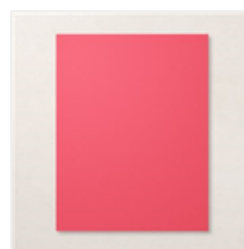
Silver & Gold 12" X 12" (30.5 X 30.5 Cm) Adhesive-Backed Glimmer Paper - 162288



2022-2024 In Color™ 12" X 12" (30.5 X 30.5 Cm) Textured Specialty Paper - 161747



Parakeet Party 8-1/2" X 11" Cardstock - 159259



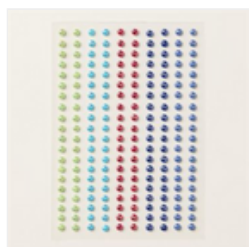
Sweet Sorbet 8-1/2" X 11" Cardstock - 159268



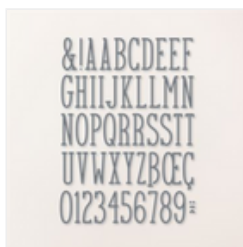
Parakeet Party 1/8" (3.2 Mm) Metallic Woven Ribbon - 159196



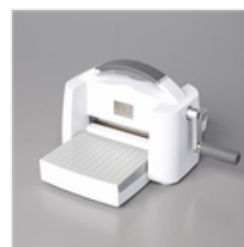
Sweet Sorbet 1/8" (3.2 Mm) Metallic Woven Ribbon - 159200



2022-2024 In Color Pearls - 161621



Alphabet À La Mode Dies - 160750



Stampin' Cut & Emboss Machine - 149653



Stampin' Seal - 152813



Adhesive Sheets - 152334

