

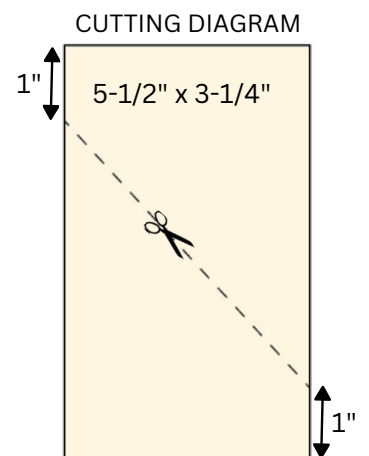


ALL ABOUT AUTUMN DIAGONAL REVEAL



MEASUREMENTS

- Vanilla Cardbase: 8-1/2" x 5-1/2" score at 4-1/4"
- Very Vanilla: 5-1/2" x 3-1/4"
 - Score on the diagonal 1" from the top to 1" from the bottom. See diagram on the right.
- Scraps of Oxidized Specialty Paper and Pretty Peacock



INSTRUCTIONS

- Stamp the words on Pretty Peacock scrap paper and heat emboss in copper.
- Emboss the top Vanilla panel and cut on the diagonal.
- Cut various sizes of leaves from the Oxidized Specialty Paper.
- Attach the leaves with Seal Adhesive along the diagonal reveal.
- Attach the top halves of the top vanilla panel with Stampin' Dimensionals.
- Attach the word panel with Stampin' Dimensionals.
- Attach Sequins.



All About Autumn Spritz & Splatter Supplies

Tami White
tami@stampwithtami.com
www.stampwithtami.com



**ALL ABOUT AUTUMN SUITE
2023 SEPT-DEC MINI CATALOG**



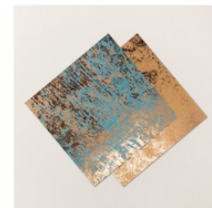
Autumn Leaves Bundle
Save 10% With Bundle
162186



Autumn Leaves Stamp Set
162179



Distressed Tile Embossing
Folder
162189



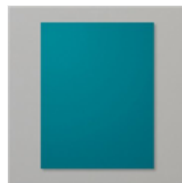
Oxidized Copper 12" x 12"
Specialty Designer Series
Paper



VersaMark Pad -
102283



Very Vanilla 8-1/2"
X 11" Cardstock -
101650



Pretty Peacock 8-
1/2" X 11" Cardstock -
150880



Neutrals Adhesive-
Backed Sequins -
161627



Paper Trimmer -
152392



Heat Tool - 129053



Embossing
Additions Tool Kit -
159971



Stampin' Seal -
152813



Stampin'
Dimensionals -
104430



Stampin' Cut &
Emboss Machine -
149653

