



FUN IN THE SUN PAPER PUMPKIN TRIPLE TIER



SEE TEMPLATE AND VIDEO FOR HELP CREATING THE FOLD

CARD BASE PANELS

- Bottom Tier: 10-1/2" x 5"
 - Scored at 5" & 10"
- Middle Tier: 9-1/2" x 4"
 - Scored at 4-1/2" & 9"
- Top Tier is one of the printed kit pieces
- Strips: 5" x 1/2" (2)

MATS

- White Bottom Tier: 4-3/4" X 4-3/4"
- White Middle Tier: 4-1/4" x 2-1/4"
- Azure Front: 3-5/8" x 3-3/8"
- White Front: 3-1/2" x 3-1/4"

PRINTED PAPER

- Bottom Tier: 4-5/8" X 4-5/8"
 - Basics Designer Series Paper
- Middle Tier: 4-1/8" X 2-1/8"
 - Printed kit piece
- Front: Printed Kit Piece cut to 3-3/8" x 3-1/8"

BACK

- Middle Tier Azure Back: 4-3/8" x 1-1/2"
- Bottom Tier White Back: 4-3/4" x 4-3/4"
- Kickstand for the back: 4-3/4" x 8-1/2"
 - Score at 3", 6", 7" & 8"

Note:

I don't have individual instructions for this triple tier card size. I was experimenting when I made it. I've included all of the measurements for you above. The printed pieces are mostly die cuts from the Fun in the Sun Paper Pumpkin kit.

You can use the tutorials, video and template I created for the standard sized Triple Tier Pull Out Cards. I've included a template below, and the video is on this project page.



Fun in the Sun Pull Up Supplies

Tami White
 tami@stampwithtami.com
 www.stampwithtami.com



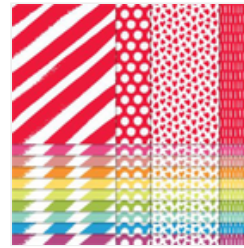
Fun In The Sun Paper Pumpkin Refill - 163237



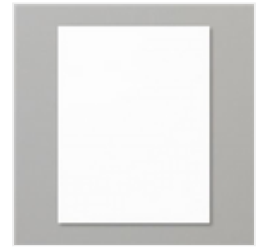
Prepaid Paper Pumpkin Subscription 1-Month - 137858



Basic Gray Classic Stampin' Pad - 149165



Brights 6" X 6" (15.2 X 15.2 Cm) Designer Series Paper - 161643



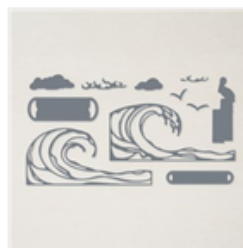
Basic White 8-1/2" X 11" Cardstock - 159276



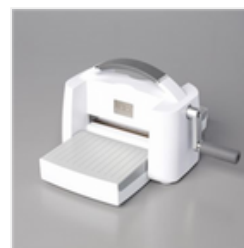
Azure Afternoon 8-1/2" X 11" Cardstock - 161719



Basic Gray 8-1/2" X 11" Cardstock - 121044



Waves Dies - 158840



Stampin' Cut & Emboss Machine - 149653



Paper Trimmer - 152392



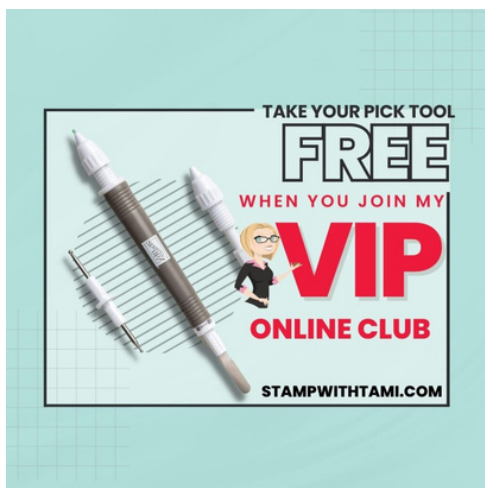
Stampin' Seal - 152813



Stampin' Seal+ - 149699



Stampin' Dimensionals - 104430



Fun in the Sun Triple Tier Card Photos

Tami White
tami@stampwithtami.com
www.stampwithtami.com



— Carousel Fun Fold —



Kickstand

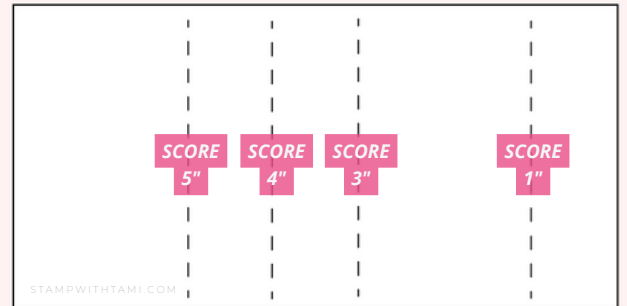
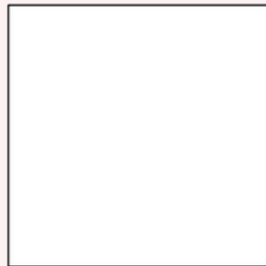




Triple Tier

CARD TEMPLATE

TOP TIER:
3" X 3"



KICKSTAND FOR BACK:
7" X 3-1/2" for Portrait Card
7" x 4-1/8" for Landscape Card

MIDDLE TIER SLIDER STRIP:
4" X 1"



MIDDLE TIER:
10-1/4" X 3-1/8"

SCORE 6-3/4" & 3-3/8"

SLITS

From the edge at 1" & 2-3/8"
Cut slit from 1/4" to 2-1/2"



BOTTOM TIER SLIDER STRIP:
5" X 1"

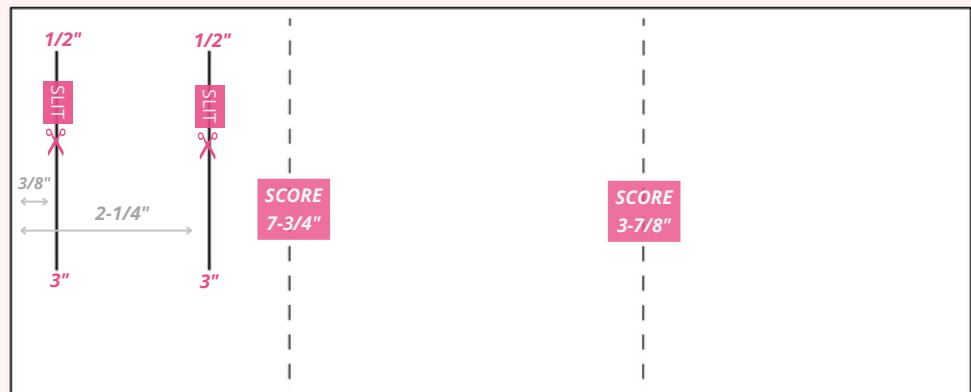


BOTTOM TIER:
11" X 4-1/2"

SCORE 7-3/4" & 3-7/8"

SLITS

From the edge at 3/8" & 2-1/4"
Cut slit from 1/2" to 3"



I've modified the bottom tier to work with 8-1/2" x 11" card stock. If you have 12" x 12" card stock use 11-5/8" x 4-1/2" for the base.

