



COUNTRYSIDE CARD SET



PART 1

Stamp the Countryside Corners in Versamark on Boho Blue. Heat emboss in white.

Cut into 3 pieces with the Largest, 3rd largest and 5th largest Countryside dies to use on 3 projects.



PART 2

CARD #1 CUTS

- Boho Blue Cardbase: 8-1/2" x 5-1/2" scored in half
- Boho Blue: 5-1/4" x 4"
- Basic White: 5" x 3-3/4"
- Scraps Basic White & Misty Moonlight

INSTRUCTIONS

- Cut the 2nd largest Countryside die from white.
- Stamp the flowers in 2 steps: Boho & Misty inks. Then fussy cut with Paper Snips.
- Heat emboss the words in white on Misty Moonlight. Then cut the words with the coordinating die.
- Stamp the bottle in Boho Blue ink on the white Countryside panel.
- Assemble the card with Seal Adhesive & Stampin' Dimensionals.

Card cased from Mikaela Titheridge

CARD #2 CUTS

- Night of Navy Cardbase: 11" x 4-1/4"
 - Score at 2-3/4" & 5-1/2"
- Boho Blue Z Fold Mechanism: 9" x 2-1/2"
 - Score at 3" & 6"
- Striped DSP: 4" x 2-1/2"
- Flower DSP: 5-1/4" x 4"
- White: 2-3/4" x 2-1/4"

INSTRUCTIONS

- Cut the 3rd largest Countryside die from white.
- Stamp the words on front and inside panels.
- Assemble the card with Seal Adhesive.
- Attach Iridescent Pearls.



Countryside Inn Card Set Supplies

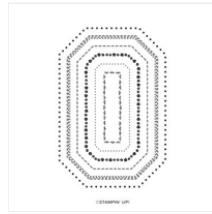
Tami White
tami@stampwithtami.com
www.stampwithtami.com



Countryside Inn Suite Collection - 161474



Countryside Corners Bundle - 161472



Countryside Corners Cling Stamp Set (English) - 161468



Countryside Corners Dies - 161471



Countryside Inn 12" X 12" (30.5 X 30.5 Cm) Designer Series Paper - 161467



Misty Moonlight 8-1/2" X 11" Cardstock - 153081



Charming Sentiments Photopolymer Stamp Set (English) - 159985



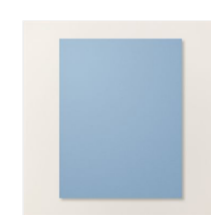
Sentiment Silhouettes Dies - 158733



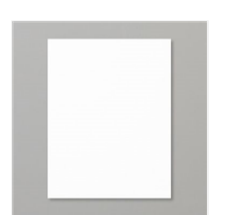
Timeless Arrangements Photopolymer Stamp Set (English) - 161521



Bottled Happiness Photopolymer Stamp Set (English) - 158684



Boho Blue 8-1/2" X 11" Cardstock - 161724



Basic White 8-1/2" X 11" Cardstock - 159276



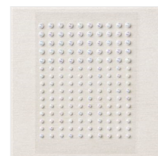
Boho Blue Classic Stampin' Pad - 161650



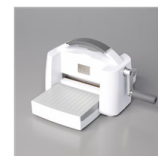
Misty Moonlight Classic Stampin' Pad - 153118



Night Of Navy Classic Stampin' Pad - 147110



Iridescent Pearl Basic Jewels - 158987



Stampin' Cut & Emboss Machine - 149653



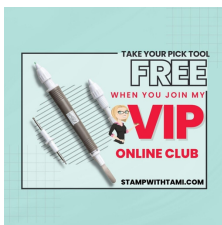
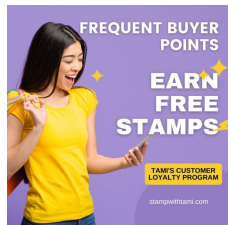
Paper Trimmer - 152392



Stampin' Seal - 152813



VersaMark Pad - 102283



Basics Embossing Powders - 155554



Heat Tool - 129053



I stamped embossed the Countryside Corners stamp set once. Then cut it to make these 3 labels for 3 different projects.

