



AWASH IN BEAUTY POP OUT DELUXE



See the Stampin' Scoop Show video and template below.

CARD BASE CUTS & ASSEMBLY

- Blackberry Bliss Card Base #1: 8-1/2" x 5-1/2"
 - Score on the long side at 2-1/8", 4-1/4" & 6-3/8"
- Blackberry Bliss Card Base #2: 5-1/2" x 4-1/2"
 - Score on the short side at 4-1/4"
- Attach 2 card bases together with Seal+.

CARD BASE LAYERS:

- Rose Gold Foil: 5-1/4" x 4"
- Rose Gold Foil: (2) 5-1/4" x 1-3/4"
- Rose Gold Foil Front: 3-1/4" x 3"
- Basic White Front: 3" x 2-3/4"
- Designer Series Paper: (2) 5" x 1-1/2"
- Attach with Seal Adhesive.

POP UP MECHANISM INSERT ASSEMBLY

- Blackberry Bliss: 7-1/2" x 5"
 - Score at 3-3/4"
- Basic White Pop Up: 7-1/4" x 4-3/4"
 - Score in half at 3-5/8"
 - Mark on the center score 1-1/4" from the bottom
 - Mark the top 1" from either edge.
 - Score from the 1-1/4" mark to either 1" mark.

POP UP LAYERS

- Blackberry Bliss: (2) 4-3/4" x 3-1/2" 3-3/4"
- Adhesive Sheet: 4-3/4" x 3-1/2" 3-1/2"
 - Attach Adhesive Sheet to the back of 1 of the Blackberry panels and cut with the lattice die.
 - Attach the die cut lattice to the other Blackberry panel and attach to the front of the Blackberry Insert.
- Stylish Shapes circle dies: 2nd smallest = White and 3rd smallest = Rose Gold foil. Attach over the lattice panel.
- Cut flowers from designer series paper and attach to the pop up mechanism inside.

Awash in Beauty Pop Out Pop Up

Tami White
tami@stampwithtami.com
www.stampwithtami.com



Awash In Beauty Suite Collection (English) - 158988



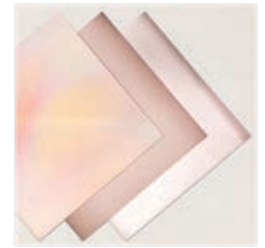
True Beauty Cling Stamp Set (English) - 158976



Organic Beauty Dies - 158983



Awash In Beauty 12" X 12" (30.5 X 30.5 Cm) Designer Series Paper - 158973



Rose Gold 12" X 12" (30.5 X 30.5 Cm) Specialty Paper - 159139



Basic White 8-1/2" X 11" Cardstock - 159276



Blackberry Bliss 8-1/2" X 11" Cardstock - 133675



Blackberry Bliss Classic Stampin' Pad - 147092



Iridescent Rhinestones Basic Jewels - 158130



Stylish Shapes Dies - 159183



Stampin' Cut & Emboss Machine - 149653



Paper Trimmer - 152392



Stampin' Seal - 152813



Stampin' Dimensionals - 104430



Adhesive Sheets - 152334



Awash in Beauty Pop Out Pop Up

Tami White
tami@stampwithtami.com
www.stampwithtami.com



STAMPWITHTAMI.COM
Tami White
©2023 STAMPIN' UP!

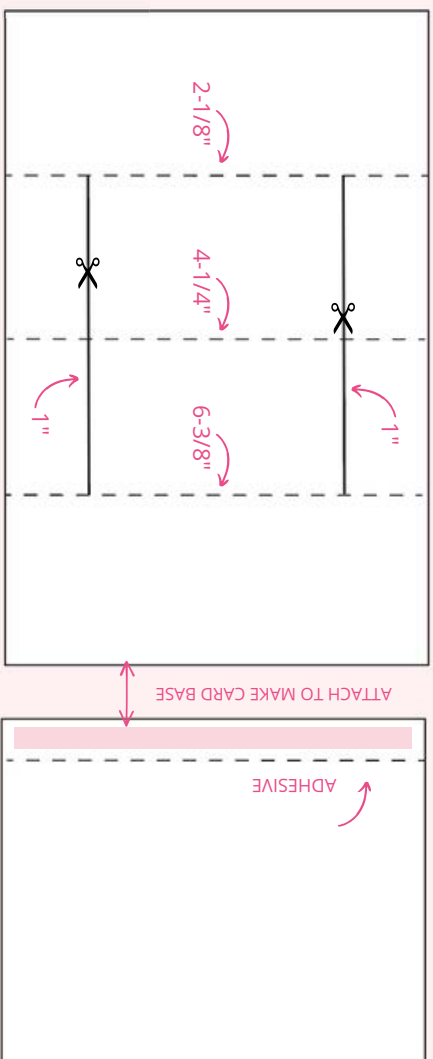




Pop Out Deluxe

FUN FOLD TEMPLATE

CARD BASE (2 PIECES)



CARD BASE #1 BLACKBERRY BLISS

8-1/2" X 5-1/2"

SCORE 2-1/8", 4-1/4" & 6-3/8"

1" FROM TOP & BOTTOM:
CUT FROM SCORE LINE
TO SCORE LINE

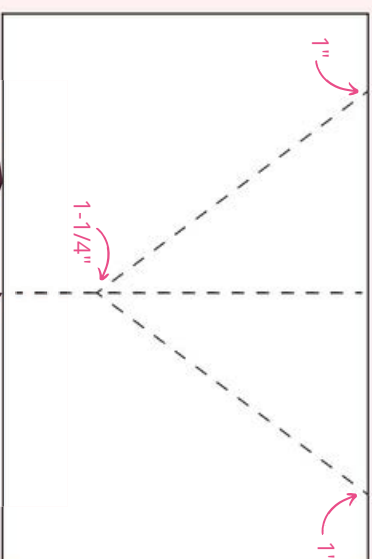
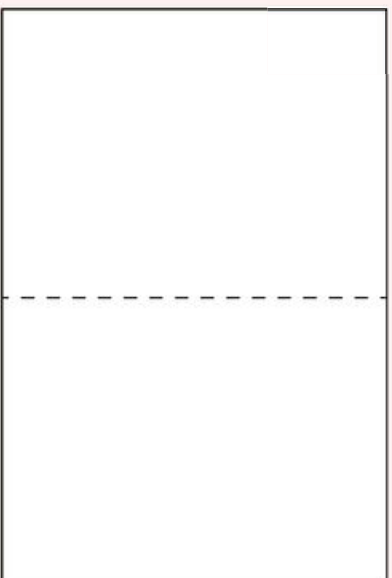


INSERT BLACKBERRY BLISS

7-1/2" X 5"

SCORE 3-3/4"

STAMPWITHTAMI.COM



CARD BASE #2 BLACKBERRY BLISS

5-1/2" X 5" SCORE

AT 3/4"

1" FROM TOP & BOTTOM:
CUT FROM SCORE LINE
TO SCORE LINE

ATTACH TO CARD BASE #1
TO CREATE BASE

POP UP MECHANISM BASIC WHITE

7-1/4" X 4-3/4"

SCORE 3-5/8"

ON THE TOP EDGE MARK 1"
IN FROM EITHER SIDE

ON THE BOTTOM CENTER SCORE
MARK 1-1/4"

SCORE FROM THE CENTER MARK TO
THE 1" MARK ON BOTH SIDES



STAMPWITHTAMI.COM