



#### MEASUREMENTS:

- Pool Party Card Base: 8-3/4" x 7-1/2" scored at 3-3/4"
- Basic White: 8-1/4" x 3-1/4"
- Balmy Blue: 8-1/8" x 3-1/8"
- Basic White: 8" x 3"
- Daisy Pattern Designer Paper: 8" x 1-3/4"
- Scraps: Soft Suede, Basic Black & turtles from DSP

#### INSTRUCTIONS:

- Stamp raindrops randomly around the back of the white panel.
- Use the Blending Brushes and Balmy Blue ink pad to color the background.
- Flick Wink of Stella across the panel for shimmer.
- Stamp the words on black scrap in Versamark and heat emboss in white.
- Using the Stampin' Cut & Emboss machine cut the following:
  - Words with coordinating die from the Charming Sentiments bundle.
  - Soft Suede: Stump and bridge (attach bridge to Adhesive Sheet first).
  - Turtle - 1 matched the die and 1 is fussy cut.
  - Use the scalloped edgelit from the Basic Borders die for the edge of the grass strip. It's not long enough for the whole layer so it will need to go through twice.
- Assemble the card with Seal Adhesive & Stampin' Dimensionals.
- Attach Iridescent Rhinestones.

# Rain or Shine Slimline Card - Series #5

Tami White

[tami@stampwithtami.com](mailto:tami@stampwithtami.com)

[www.stampwithtami.com](http://www.stampwithtami.com)



Rain Or Shine Suite Collection (English) - 160556



Playing In The Rain Bundle (English) - 160551



Charming Sentiments Bundle (English) - 158734



VersaMark Pad - 102283



Basics Embossing Powders - 155554



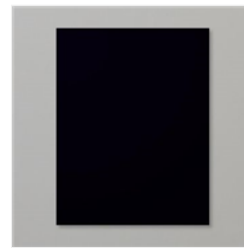
Rain Or Shine Specialty 12" X 12" (30.5 X 30.5 Cm) Designer Series Paper - 160540



Balmy Blue Classic Stampin' Pad - 147105



Basic White 8-1/2" X 11" Cardstock - 159276



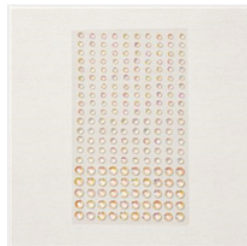
Basic Black 8-1/2" X 11" Cardstock - 121045



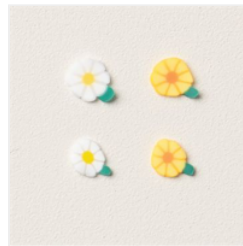
Soft Suede 8-1/2" X 11" Cardstock - 115318



Balmy Blue 8-1/2" X 11" Cardstock - 146982



Iridescent Rhinestones Basic Jewels - 158130



Loose Daisy Embellishments - 160555



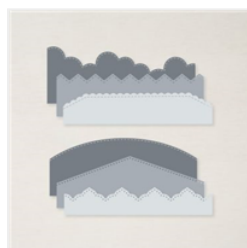
Water Painters - 151298



Wink Of Stella Clear Glitter Brush - 141897



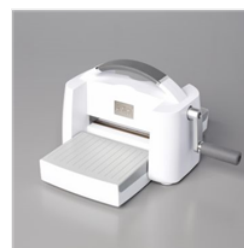
Blending Brushes - 153611



Basic Borders Dies - 155558



Heat Tool - 129053



Stampin' Cut & Emboss Machine - 149653



Stampin' Seal - 152813

# Rain or Shine Slimline Card - Series #5

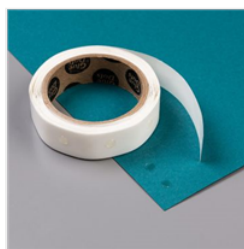
Tami White  
[tami@stampwithtami.com](mailto:tami@stampwithtami.com)  
[www.stampwithtami.com](http://www.stampwithtami.com)



Stampin'  
Dimensionals -  
104430



Adhesive Sheets -  
152334



Mini Glue Dots -  
103683