



Stamp with Tami.com

Tami White  
tami@stampwithtami.com  
www.stampwithtami.com



See template and video for how to do this fold.

#### MEASUREMENTS:

- Card Base: 8-1/2 x 5-1/2"
- Storybook Gnomes DSP (Left): 4" x 2-3/4"
- Storybook Gnomes DSP (Right Back): 2-1/4" x 1-3/4"
- Storybook Gnomes DSP (Right Middle): 2-1/4" x 1"
- Storybook Gnomes DSP (Right Front): 2-1/4" x 3/4"
- Balmy Blue (Red Card): 3rd Largest Scallop Contour Die
- Basic White (both): 4 Largest Scallop Contour Die
- Scraps: Old Olive, Poppy Parade, Basic White, Petal Pink and DSP Animals

#### INSTRUCTIONS:

- Create Side Step Fold (see template):
  - On the 5-1/2" side, 3" from the side cut from 1" - 6-1/2".
  - On the 8-1/2" side, 4-1/2" from the top score in 3".
  - On the opposite side score 2-1/2" from the end at 1", 2", 3-1/4", 4-1/2" & 6-1/2"
- Stamp the words on the white die cut.
- Using the Stampin' Cut & Emboss Machine cut the following:
  - The pieces for the gnome: Poppy hat & feet, Petal Pink nose and White beard.
  - (5) Grass die cuts from Old Olive.
  - Mushroom from the DSP.
- Hand cut the animals from the DSP for the blue card.
- Assemble the cards with Seal Adhesive & Stampin' Dimensionals.
- Attach gems.

# Storybook Gnomes [Side Step Series Card]

Tami White  
tami@stampwithtami.com  
www.stampwithtami.com



Storybook Gnomes Suite Collection (English) - 159630



Kindest Gnomes Bundle (English) - 159626



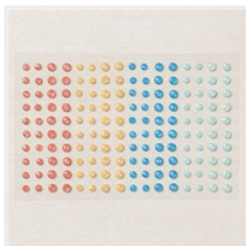
Kindest Gnomes Cling Stamp Set (English) - 159616



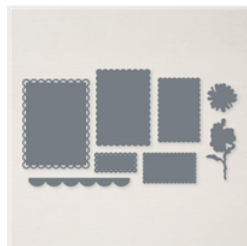
Gnomes Dies - 159625



Storybook Gnomes 12" X 12" (30.5 X 30.5 Cm) Designer Series Paper - 159615



Fine Sparkle Adhesive Backed Gems - 159967



Scalloped Contours Dies - 155560



Pale Papaya Classic Stampin' Pad - 155670



Poppy Parade Classic Stampin' Pad - 147050



Sponge Daubers - 133773



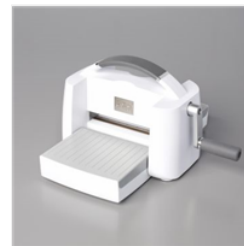
Tuxedo Black Memento Ink Pad - 132708



Stampin' Seal - 152813



Stampin' Dimensionals - 104430



Stampin' Cut & Emboss Machine - 149653

# Side Step Fun Fold TEMPLATE

