



Card 9 in my Center Column Pop Up Fun Fold Series. See video for how to do this fold.

MEASUREMENTS:

- Basic Black Card Base: 5-1/2" x 4-1/4"
- Pop Up Mechanism: 9-1/2" x 4-1/4"
Scored at 1/2", 1-1/4", 2", 2-3/4", 6-3/4", 7-1/2", 8-1/4" & 9"
- White star side of Black & White Designs DSP (Base): 5-1/4" x 4"
- Black star side of Black & White Designs DSP (Pop Up Front): 4" x 3-3/4"
- Window Sheet: 3-3/4" x 3-1/2"
- Basic Black, Shimmery White & Parakeet Party

INSTRUCTIONS:

- Stamp the words, witch and frog on Shimmery White scrap.
- Use the Blending Brush and Granny Apple Green ink on the white star DSP panel.
Attach to the card base using Seal Adhesive.
- Color the images with Stampin' Blends per the chart.
- Use the Paper Snips to cut out the witch & frog images.
- Using the Stampin' Cut & Emboss Machine, cut the following:
Words with the banner die.
Attach the black star DSP to the front pop up mechanism.
Then cut 3rd smallest Diorama Die from the center.
From Black scrap cut the 3rd & 4th Diorama Die at the same time to create a black frame.
- Attach the Window Sheet under the Diorama cut out from the pop up mechanism, then attach the black frame to the front.
- Using Seal + attach the pop up mechanism together and to the card base.
- Attach the words with Seal Adhesive and the witch & frog with Stampin' Dimensionals.
- Attach sequins.

Best Witches [Center Pop Up Series Card 9]

Tami White
tami@stampwithtami.com
www.stampwithtami.com



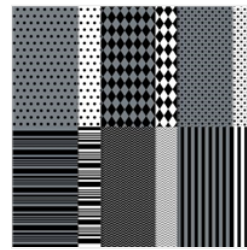
Best Witches Cling Stamp Set (English) - 159860



Tuxedo Black Memento Ink Pad - 132708



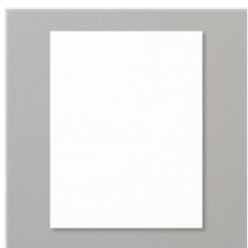
Granny Apple Green Classic Stampin' Pad - 147095



Black & White Designs 12" X 12" (30.5 X 30.5 Cm) Designer Series Paper - 159861



Window Sheets - 142314



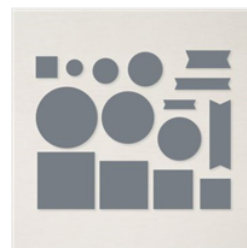
Shimmery White 8-1/2" X 11" Cardstock - 101910



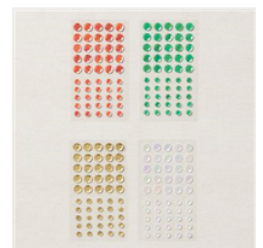
Blending Brushes - 153611



Layering Diorama Dies - 155565



Stylish Shapes Dies - 159183



Adhesive Backed Seasonal Sequins - 159964



Basic Black Stampin' Blends Combo Pack - 154843



Granny Apple Green Stampin' Blends Combo Pack - 154885



Daffodil Delight Stampin' Blends Combo Pack - 154883



Pumpkin Pie Stampin' Blends Combo Pack - 154897



Fresh Freesia Stampin' Blends Combo Pack - 155518



Soft Suede Stampin' Blends Combo Pack - 154906



Old Olive Stampin' Blends Combo Pack - 154892



Stampin' Blends Color Lifter - 144608



Pool Party Stampin' Blends Combo Pack - 154894



Stampin' Blends Medium Light Combo Pack - 159463

