



This is card #2 in my Hues of Happiness Suite Series. Visit my blog for more.

CUTS:

- Basic White card base: 8-1/2" x 5-1/2" scored in half
- Vellum Layering Designs: 5-1/4" x 4"
- Scraps: Silver Foil, Vellum Cardstock, Basic White and flowers from the Designer Series Paper

CARD INSTRUCTIONS:

- Stamp the teacup image in Versamark ink on Basic White scrap paper.
- Pour the black heat emboss powder over the top and heat with the Heat Tool.
- Using the Stampin' Cut & Emboss Machine cut the following:
 - Teacup with the coordinating Teacup die.
 - Flowers and leaves from the Designer Series Paper using the coordinating Blossoming Happiness Dies.
 - The largest circle from the Stylish Shapes dies from Vellum cardstock and Silver Foil.
 - Cut the middle out of the Silver Foil circle with the 2nd largest circle.
- Using Seal Adhesive attach
 - The Silver Foil circle frame to the vellum circle.
 - The Layering Designs Vellum panel to the card base.
- Using Stampin' Dimensionals attach the circle panel, teacup and flowers.
- Attach the Classic Matte Dots.

Teacup Flowers Card

Tami White
tami@stampwithtami.com
www.stampwithtami.com



Cup Of Tea Bundle
(English) - 158667



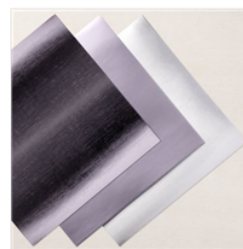
Cup Of Tea
Photopolymer
Stamp Set
(English) - 158661



Teacup Dies -
160186



Hues Of
Happiness 12" X
12" (30.5 X 30.5
Cm) Designer
Series Paper -
158822



Silver Foil 12" X
12" (30.5 X 30.5
Cm) Specialty
Pack - 156457



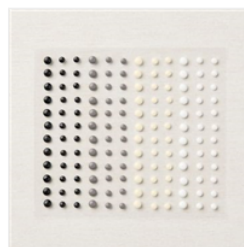
Vellum 12" X 12"
(30.5 X 30.5 Cm)
Layering Designs -
157764



Vellum 8-1/2" X
11" Cardstock -
101856



Basic White 8-1/2"
X 11" Cardstock -
159276



Classic Matte Dots
- 158146



VersaMark Pad -
102283



Basics Embossing
Powders - 155554



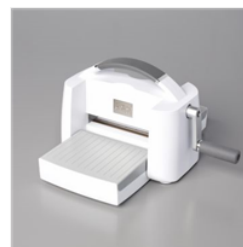
Heat Tool - 129053



Blossoming
Happiness Dies -
158823



Stylish Shapes
Dies - 159183



Stampin' Cut &
Emboss Machine -
149653



Stampin'
Dimensionals -
104430



Stampin' Seal -
152813