



Visit this Easter Bunny Shaker card project page for more in my Easter Friends Series.

CLICK HERE

CUTS

- Petal Pink Cardbase: 11" x 4-1/4" scored in half at 5-1/2"
- Smoky Slate: 5-1/8" x 3-7/8"
- Basic White: 5" x 3-3/4"
- Basic White: 3-1/2" x 3-1/2"
- Window Sheet: 3-1/2" x 3-1/2"
- Basic White scrap for bunny

INSTRUCTIONS

- In Basic Gray stamp the words on the 3-1/2" panel and the bunny on scrap paper.
- Color the bunny image with the Smoky Slate Stampin' Blends Markers then cut out.
- With the Stampin' Cut & Emboss Machine:
 - Cut a window out of the center of the Basic White panel with the largest Stitched So Sweetly dies
 - Emboss the background with the Timeworn Type Folder
- Attach the Window Sheet to the back of the textured window panel with Seal Adhesive.
- Attach the Petal Pink cotton ribbon the front of the window panel with Seal Adhesive.
- Attach Foam Strip around the cut out window.
- Peel off 3/4 of the adhesive backing of the Foam Strip and line up and attach the words.
- In the opening where the adhesive backing is still attached, pour in the Frosted Beads. Then remove the remaining backing and attach.
 - See video linked on this project post for help assembling the shaker card.
- Assemble the card with Seal Adhesive.
- Attach the bunny with Stampin' Dimensionals.
- Attach Polished Dots.

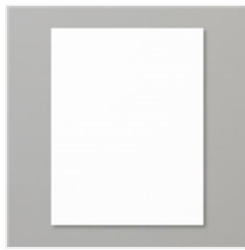


Easter Bunny Shaker Card

Tami White
tami@stampwithtami.com
www.stampwithtami.com



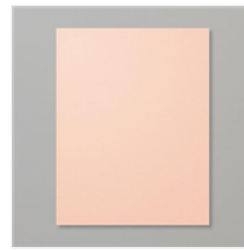
Easter Friends
Cling Stamp Set
(English) - 157737



Basic White 8-1/2"
X 11" Cardstock -
159276



Window Sheets -
142314



Petal Pink 8-1/2" X
11" Cardstock -
146985



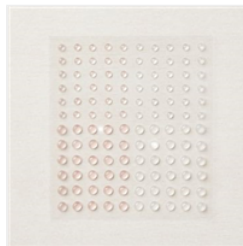
Basic Gray Classic
Stampin' Pad -
149165



Smoky Slate
Stampin' Blends
Combo Pack -
154904



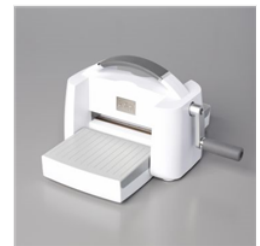
1/8" (3.2 Mm)
Cotton Ribbon
Combo Pack -
158140



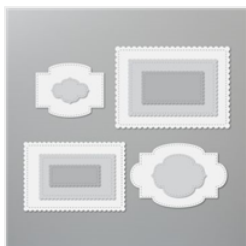
Polished Dots -
158134



Frosted Beads
Assortment -
158132



Stampin' Cut &
Emboss Machine -
149653



Stitched So
Sweetly Dies -
151690



Timeworn Type 3D
Embossing Folder
- 156505



Foam Adhesive
Strips - 141825



Stampin'
Dimensionals -
104430



Stampin' Seal -
152813