



- Card Base: 8-1/2" x 5-1/2" scored in half
- Real Red: 5-1/4" x 4"
- Basic Black: 5-1/8" x 3-7/8"
- Designer Series Paper (stars): 5" x 3-3/4"
- Basic Black: 1-3/4" x 6"
- Designer Series Paper (equipment images): (3) 1-7/8" x 1-1/4" (or stitched rectangle dies)
- White Rectangles for film strip: 1/8" x 1"
- Scraps of Basic Black

#### CARD INSTRUCTIONS:

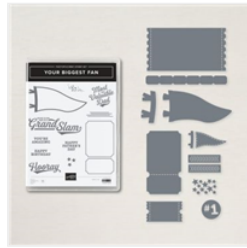
- Stamp the words in Versamark ink on black scrap, pour white emboss powder over the top and heat with the Heat Tool. Cut out with paper snips.
- Using the Stampin' Cut & Emboss Machine:
  - Cut the 3 designer series paper rectangles with Stitched Rectangles
  - Cut 3 film strip dies from black scrap
- Attach the 1-3/4" x 6" black strip diagonally to the stars designer series paper with Seal Adhesive. There will be overhang.
- Attach the 3 Stitched Rectangle panels with Seal Adhesive.
- Attach the film strip die strips on either side of the black strip with Seal Adhesive. 1 strip won't be long enough so you'll need to add extra from the extra strip.
- Attach the white rectangles to the center of each ticket stub with Mini Glue Dots.
- Cut off any overhang with of the strips on designer paper, then attach to the black layer with Seal Adhesive.
- Wrap the twine around the panel several times and tie in a knot.
- Attach the words with Black Dimensionals.
- Attach the black panel to the Real Red panel with Seal Adhesive, then attach to the card base with Black Dimensionals.
- Attach Resin Stars.

# Film Strip Card [Sports Fan Series Card 7]

Tami White  
tami@stampwithtami.com  
www.stampwithtami.com



Hey Sports Fan-Suite Collection (English) - 157896



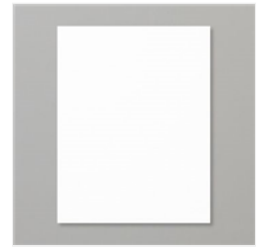
Your Biggest Fan Bundle (English) - 157893



Your Biggest Fan Photopolymer Stamp Set (English) - 158060



Hey Sports Fan 12" X 12" (30.5 X 30.5 Cm) Designer Series Paper - 157882



Basic White 8-1/2" X 11" Cardstock - 159276



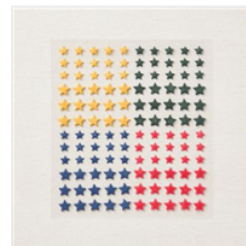
Basic Black 8-1/2" X 11" Cardstock - 121045



Real Red 8-1/2" X 11" Cardstock - 102482



Bumblebee 8-1/2" X 11" Cardstock - 153077



Resin Stars Embellishments - 158144



Fan Bakers Twine - 158143



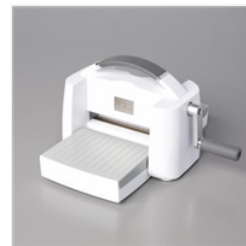
Basics Embossing Powders - 155554



Heat Tool - 129053



VersaMark Pad - 102283



Stampin' Cut & Emboss Machine - 149653



Rectangle Stitched Dies - 151820



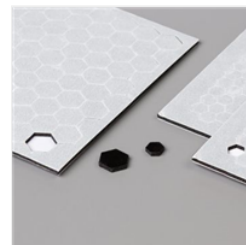
Stampin' Seal - 152813



Mini Glue Dots - 103683



Paper Snips Scissors - 103579



Black Stampin' Dimensionals Combo Pack - 150893