

Tami's Gumball Series Card 5: Magic 8 Ball Card

Tami White
tami@stampwithtami.com
www.stampwithtami.com



Collect all 8 tutorials in my "Amazing Things to Make with your Stampin' Up! Gumball Greetings Bundle" Series.
Card 5 is the Magic 8 Ball card.

[CLICK FOR GUMBALL GREETINGS VIDEO TUTORIAL](#)

CUTS

- Crumb Cake Card Base: 8-1/2" x 5-1/2" scored in half.
- Shimmery White (Inside): 5" x 3-3/4"
- Early Espresso: 5" x 3-3/4" (or largest Stitched Rectangle Die)
- Granny Apple Green: 4-1/2" x 3-1/4"
- Designer Series Paper: 4-3/8" x 3-1/8" (or 3rd largest Stitched Rectangle Die)
- Shimmery White: 1-5/8" x 1-1/4" (or smallest Stitched Rectangle Die)
- Scraps: Brushed Metallic, Shimmery White & Basic Black

INSTRUCTIONS

- Stamp the words in Granny Apple Green ink on Shimmery White (smallest panel).
- Stamp the dome image in Versamark ink on Basic Black scrap, then pour white heat emboss powder over the top and heat with Heat Tool.
- Using the Stampin' Cut & Emboss Machine cut the following:
 - Cut the dome stamped image with the 4th smallest Layering Circle die. Use the black marker to color any white ink on the edges.
 - Cut the smallest Layering Circle from Shimmery White.
 - Attach an Adhesive Sheet to Basic Black scrap and cut the #8 from the Playful Alphabet Dies.
 - Attach an Adhesive Sheet to Brushed Metallic scrap and cut hearts.
- Assemble the card with Seal Adhesive. Use Black Stampin' Dimensionals on the 8 ball.



Tami's Gumball Series Card 5: Magic 8 Ball Card

Tami White
tami@stampwithtami.com
www.stampwithtami.com



Gumball Greetings
Bundle - 157648



Gumball Greetings
Photopolymer
Stamp Set -
157646



Gumball Machine
Dies - 157647



Granny Apple
Green Classic
Stampin' Pad -
147095



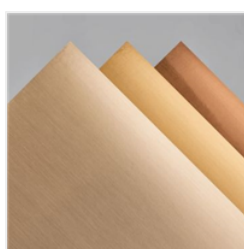
VersaMark Pad -
102283



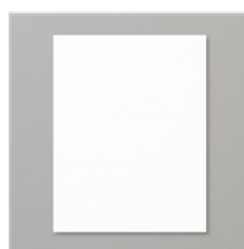
Basic Black
Stampin' Write
Marker - 100082



Sunshine &
Rainbows 6" X 6"
(15.2 X 15.2 Cm)
Designer Series
Paper - 158126



Brushed Metallic
Cardstock -
153524



Shimmery White 8-
1/2" X 11"
Cardstock -
101910



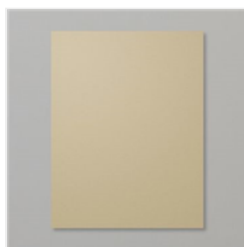
Granny Apple
Green 8-1/2" X 11"
Cardstock -
146990



Basic Black 8-1/2"
X 11" Cardstock -
121045



Early Espresso 8-
1/2" X 11"
Cardstock -
119686



Crumb Cake 8-1/2"
X 11" Cardstock -
120953



Basics Embossing
Powders - 155554



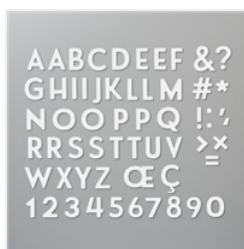
Heat Tool - 129053



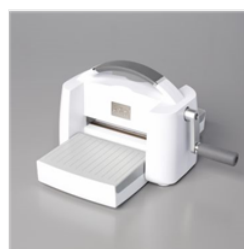
Layering Circles
Dies - 151770



Rectangle Stitched
Dies - 151820



Playful Alphabet
Dies - 152706



Stampin' Cut &
Emboss Machine -
149653



Stampin' Seal -
152813

Tami's Gumball Series Card 5: Magic 8 Ball Card

Tami White
tami@stampwithtami.com
www.stampwithtami.com



Adhesive Sheets -
152334



Black Stampin'
Dimensionals
Combo Pack -
150893