

Friendly Flamingo Card Tutorial

Tami White
tami@stampwithtami.com
www.stampwithtami.com



Friendly Flamingo Card Tutorial

CARD CUTS:

- Blushing Bride Card Base - 11" x 4-1/8" scored at 5-1/2"
- Blushing Bride - 5-3/8" x 4"
- Designer Paper - 5-1/2" x 4" for die
- Scraps: Basic White & Blushing Bride

INSTRUCTIONS:

- Stamp the flamingo in Melon Mambo ink on scrap Blushing Bride card stock and color the beak and legs with Pumpkin Pie marker.
- Using the Stampin' Cut & Emboss Machine:
 - Die cut the flamingo image.
 - Cut the Give it a Whirl rectangle & pie shaped Window out of the Designer Paper.
 - Cut out the Give it a Whirl circle piece from Basic White.
 - Cut 3 different sized hearts from Blushing Bride.
- Stamp the words on the spinner wheel.
- Use a brad to attach the wheel to the back of the designer paper rectangle panel.
- Assemble the die cut pieces to the front of the designer paper rectangle:
 - The ribbon is attached with Seal Adhesive.
 - The Flamingo and hearts die cuts are attached with Stampin' Dimensionals.
- Attach the rectangle spinner panel and Blushing Bride panel to the card base using Stampin' Dimensionals.

Friendly Flamingo Card Tutorial

Tami White

tami@stampwithtami.com

www.stampwithtami.com



[Friendly Flamingo Bundle - 156212](#)



[Friendly Flamingo Photopolymer Stamp Set - 154386](#)



[Flamingo Dies - 154313](#)



[Give It A Whirl Dies - 154336](#)



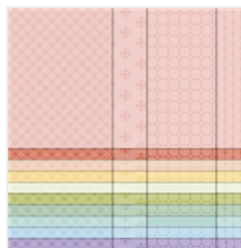
[Melon Mambo Classic Stampin' Pad - 147051](#)



[Blushing Bride 8-1/2 X 11" Cardstock - 131198](#)



[Basic White 8-1/2 X 11" Cardstock - 159276](#)



[Subtles 6" X 6" \(15.2 X 15.2 Cm\) Designer Series Paper - 155229](#)



[Petal Pink 5/8" \(1.6 Cm\) Organdy Striped Ribbon - 149441](#)



[Pumpkin Pie Stampin' Blends Combo Pack - 154897](#)



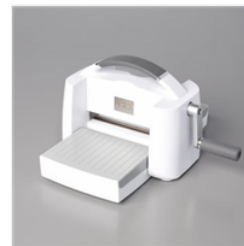
[Round & Square Brads - 155570](#)



[Stampin' Dimensionals - 104430](#)



[Mini Stampin' Dimensionals - 144108](#)



[Stampin' Cut & Emboss Machine - 149653](#)