

Oh Snap! Card & Gift Box Set Tutorial

Tami White
tami@stampwithtami.com
www.stampwithtami.com



Oh Snap Gift Set Tutorial

CUTS:

CARD

- Bumble Bee Card Stock - 8-1/2" x 5-1/2" Scored in half
- Bumble Bee - 5-1/2" x 4-1/4"
- Basic White - (2) 4-1/4" x 3-1/4"
- Misty Moonlight - 1-1/2" x 3-1/4"
- Scraps - Green/Yellow DSP for alligator and Coastal Cabana for the bird

BOX

- Love You Always Treat Box
- Basic White - 4" x 2-3/4"
- Scraps - Basic White, Real Red & Pumpkin Pie for Tasteful Label Dies

Oh Snap! Card & Gift Box Set Tutorial

Tami White
tami@stampwithtami.com
www.stampwithtami.com

INSTRUCTIONS:

CARD

- Using Shaded Spruce ink, stamp the alligator on the designer paper.
- Using Coastal Cabana ink, stamp the bird on Coastal Cabana card stock.
- Using Bumble Bee ink, stamp the flowers randomly on one of the Basic White panels.
- Use the blending brush and Bumble Bee ink around the flowers.
- Cut out the circle with the Layering Circles dies.
- Cut out the alligator and bird with Paper Snips.
- Stamp the words in Misty Moonlight Ink on the circle panel.
- Tear the Misty Moonlight card stock strip in half.
- Draw the lines on the front of the card base with the Daffodil Stampin' Blends Markers.
- Using Seal Adhesive, attach the circle to the white panel and the Misty Moonlight torn pieces (to the back of the panel).
- Using Stampin' Dimensionals, attach the main panel to the card base and the alligator and bird images.
- Attach Artistry Blooms Sequins.

BOX

- Assemble Love You Always Treat Box.
- Stamp the alligator and gold fish images in Memento Black ink on the White panel. Stamp the fish a second time on white scrap.
- Stamp the waves in Coastal Cabana ink around the alligator image.
- Stamp the words on the Pumpkin Pie scrap.
- With the Tasteful Label dies, cut out the words on the Pumpkin scrap and a label from the red scrap.
- Color the goldfish on the scrap paper with the Pumpkin Pie Stampin' Blends and cut out.
- Color the alligator with the Granny Apple Green Stampin' Blends. Tip: to get the dots use the fine tip end of the marker and tap it inside the image repeatedly to create the dots effect. Use the darker marker on the bottom of the image and the lighter marker on the top.
- Attach the white panel to the box with Seal Adhesive.
- Attach the 2 labels with Stampin' Dimensionals.
- Attach the fish with Mini Dimensionals.
- Poke a hole in the box drawer end with the Take Your Pick tool and attach the ribbon.

Oh Snap! Card & Gift Box Set Tutorial

Tami White

tami@stampwithtami.com
www.stampwithtami.com



[Oh Snap Photopolymer Stamp Set - 154486](#)



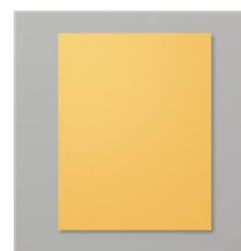
[Artistry Blooms Designer Series Paper - 152495](#)



[Coastal Cabana 8-1/2" X 11" Cardstock - 131297](#)



[Misty Moonlight 8-1/2" X 11" Cardstock - 153081](#)



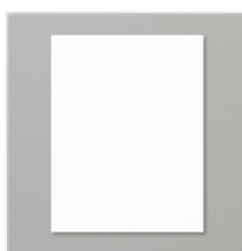
[Bumblebee 8-1/2" X 11" Cardstock - 153077](#)



[Pumpkin Pie 8-1/2" X 11" Cardstock - 105117](#)



[Real Red 8-1/2" X 11" Cardstock - 102482](#)



[Basic White 8-1/2" X 11" Cardstock - 159276](#)



[Daffodil Delight Stampin' Blends Markers Combo Pack - 144603](#)



[Pumpkin Pie Stampin' Blends Markers Combo Pack - 144599](#)



[Granny Apple Green Stampin' Blends Markers Combo Pack - 147274](#)



[Bumblebee Classic Stampin' Pad - 153116](#)



[Coastal Cabana Classic Stampin' Pad - 147097](#)



[Shaded Spruce Classic Stampin' Pad - 147088](#)



[Misty Moonlight Classic Stampin' Pad - 153118](#)



[Tuxedo Black Memento Ink Pad - 132708](#)



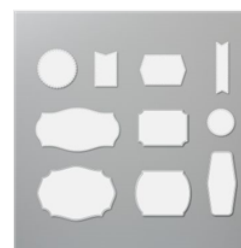
[Love You Always Treat Box - 154285](#)



[Artistry Blooms Adhesive-Backed Sequins - 152477](#)



[Playful Pets Trim Combo Pack - 152466](#)



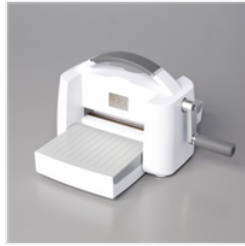
[Tasteful Labels Dies - 152886](#)

Oh Snap! Card & Gift Box Set Tutorial

Tami White
tami@stampwithtami.com
www.stampwithtami.com



[Layering Circles
Dies - 151770](#)



[Stampin' Cut &
Emboss Machine -
149653](#)



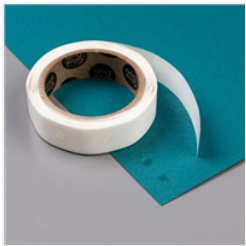
[Stampin'
Dimensionals -
104430](#)



[Mini Stampin'
Dimensionals -
144108](#)



[Stampin' Seal -
152813](#)



[Glue Dots -
103683](#)



[Paper Snips
Scissors - 103579](#)



[Paper Trimmer -
152392](#)



[Take Your Pick -
144107](#)