

Flowering Cactus Card & Gift Box Set Tutorial

Tami White
tami@stampwithtami.com
www.stampwithtami.com



Flowering Cactus Gift Set Tutorial

CUTS:

CARD

- Mint Macaron Card Stock - 8-1/2" x 5-1/2" scored in half
- Basic White - 5" x 3-3/4" (for inside)
- Calypso Coral Designer Paper - 5-1/2" x 2-3/4"
- Basic White - 1-3/4" x 3/4"
- Striped Designer Paper - 3-1/2" x 2"
- Stickers & Felt Flowers from the kit

BOX

- Mini Pizza Box
- Cactus Print Designer Paper - 3-1/4" x 3-1/4"
- Highland Heather - 2-3/4" x 2-3/4"
- Mint Macaron - 2-5/8" x 2-5/8"
- Basic White - 1-7/8" x 1-1/8"
- Highland Heather Strip (wraps around the edge) - 1" x 11"
- Designer Paper with cactus images to cut out & Felt Flowers from the kit

Flowering Cactus Card & Gift Box Set Tutorial

Tami White
tami@stampwithtami.com
www.stampwithtami.com

INSTRUCTIONS:

CARD

- Stamp the words on the white panel in Highland Heather ink.
- Using the dies and the cactus image designer paper cut out:
 - 2 Cactus Images
 - Calypso Coral Flowers
- Attach the 2 designer paper panels and inside white panel to the card with Seal Adhesive.
- Attach the die cut pieces with Stampin' Dimensionals.
- Attach twine to the back of the words with Mini Glue Dot, then attach to the card with Stampin' Dimensionals.
- Attach Felt Flowers with Mini Glue Dots.

BOX

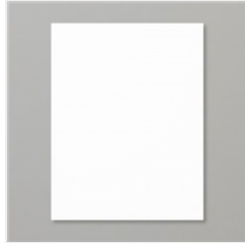
- Assemble Mini Pizza Box.
- Stamp the words in Highland Heather ink.
- Cut out the cactus image from the designer paper.
- Attach the designer paper to the lid of the box with Seal Adhesive.
- Wrap the Highland Heather strip around the outside edge of the box and attach on each side with Seal +.
 - Tip: use the Bone Folder at each corner to make a crisp score line.
- Attach the Mint Macaron and Highland Heather layers together with Seal Adhesive. Then attach to box with Stampin' Dimensionals.
- Attach the cactus die cut with Seal Adhesive.
- Attach the word panel with Stampin' Dimensionals.
- Attach Felt Flowers and Sequins with Mini Glue dots.

Flowering Cactus Card & Gift Box Set Tutorial

Tami White
tami@stampwithtami.com
www.stampwithtami.com



[Flowering Cactus Product Medley - 154559](#)



[Basic White 8-1/2" X 11" Cardstock - 159276](#)



[Mint Macaron 8-1/2" X 11" Cardstock - 138337](#)



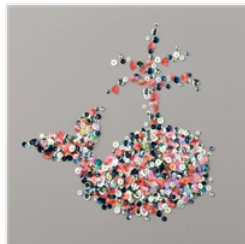
[Highland Heather 8-1/2" X 11" Cardstock - 146986](#)



[Highland Heather Classic Stampin' Pad - 147103](#)



[Mini Pizza Boxes - 144645](#)



[Whale Of A Time Sequins - 152461](#)



[Take Your Pick - 144107](#)



[Glue Dots - 103683](#)



[Mini Stampin' Dimensionals - 144108](#)



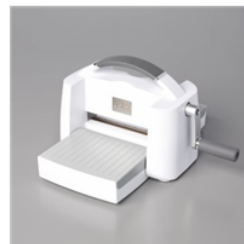
[Stampin' Seal - 152813](#)



[Stampin' Seal+ - 149699](#)



[Bone Folder - 102300](#)



[Stampin' Cut & Emboss Machine - 149653](#)