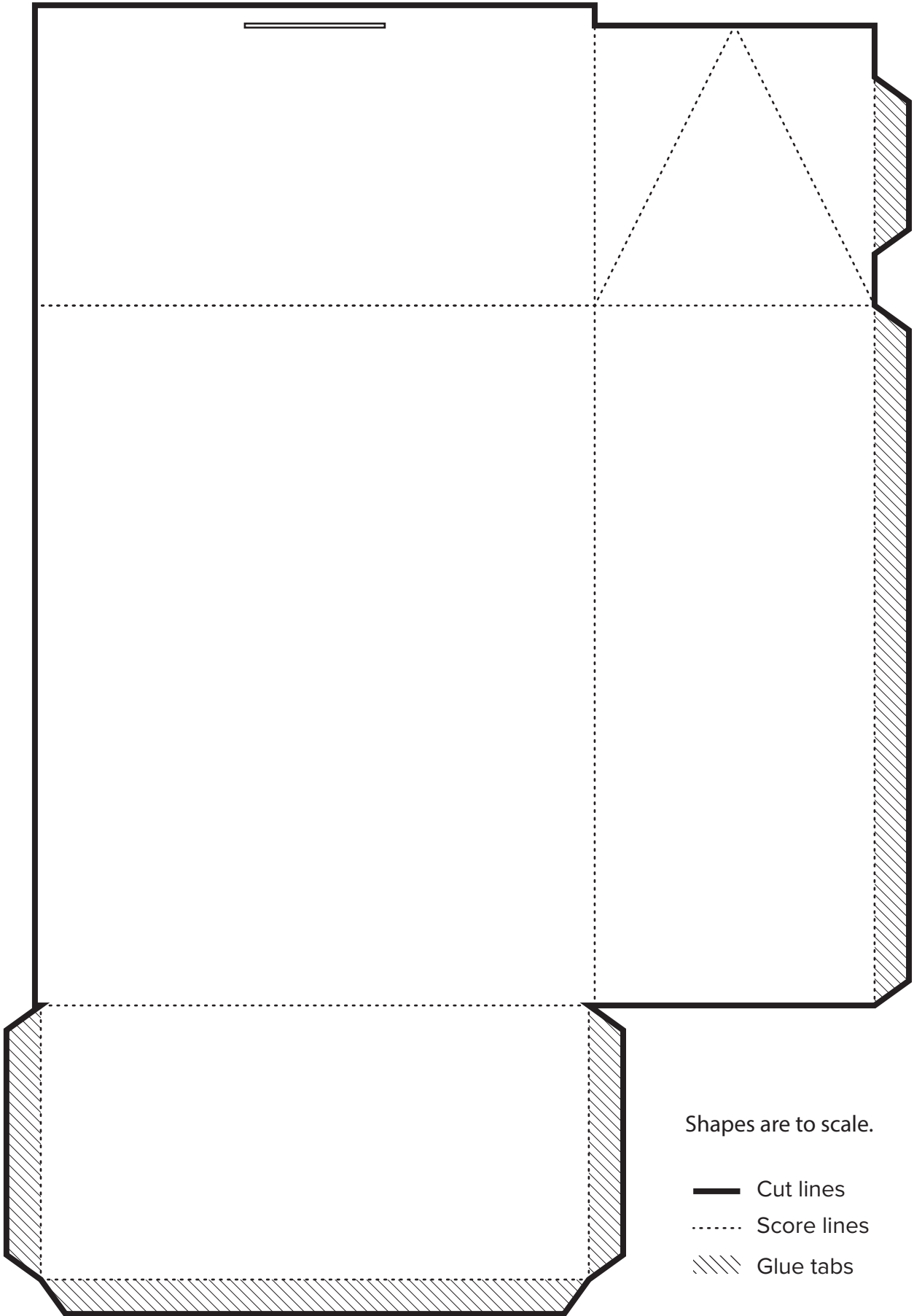
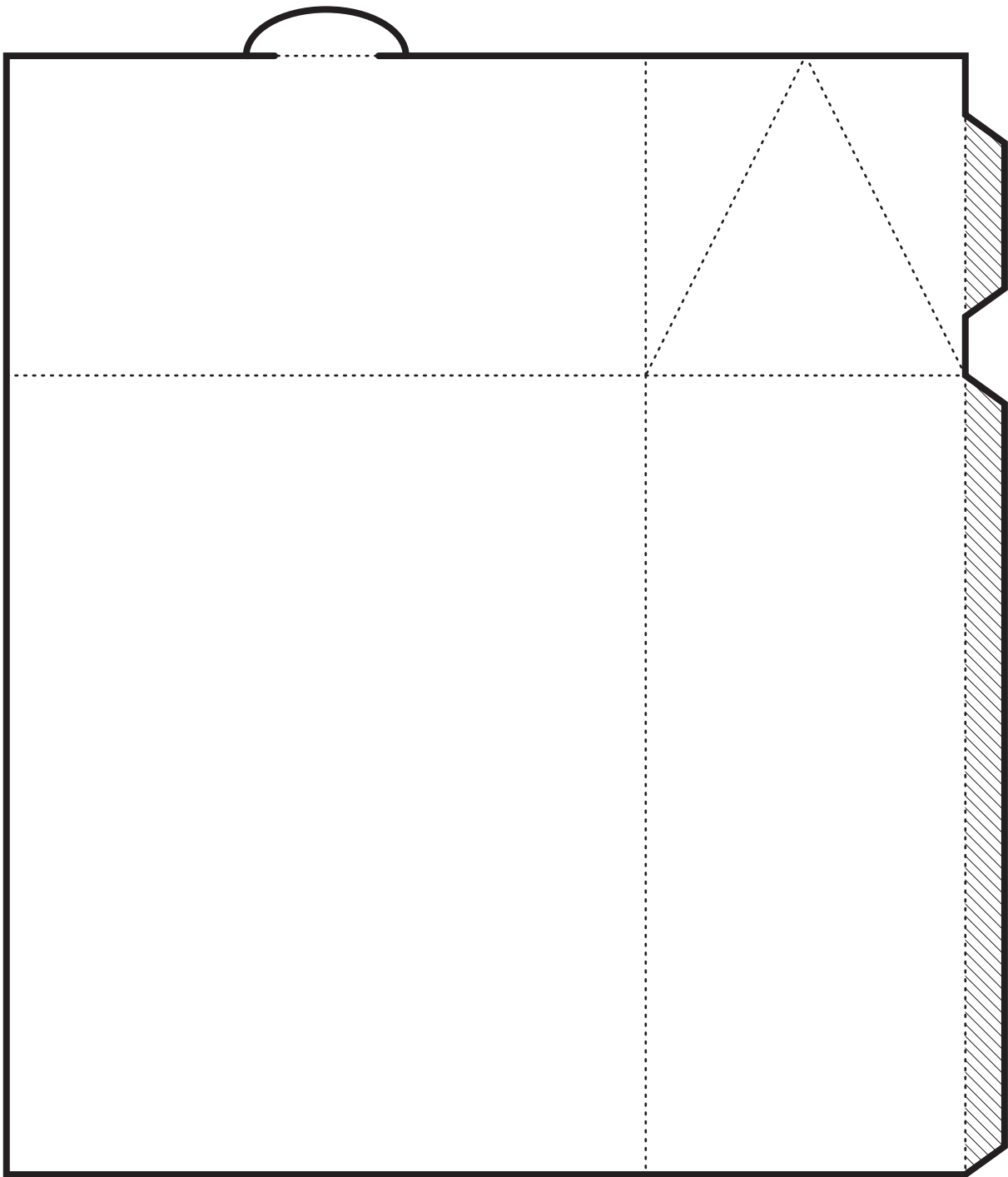


HOW TO MAKE THE PAPER PUMPKIN

# CHRISTMAS CABIN GIFT BOX

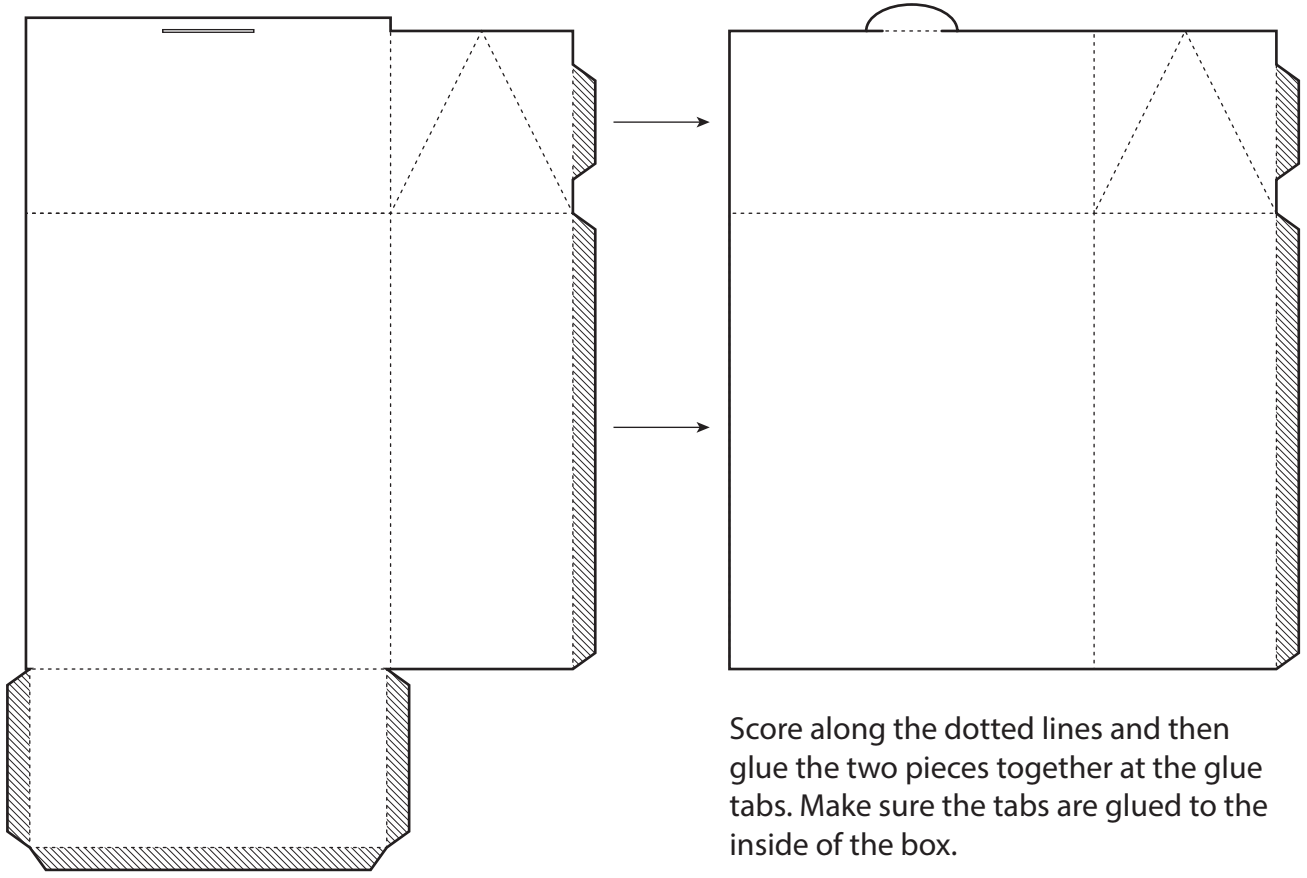




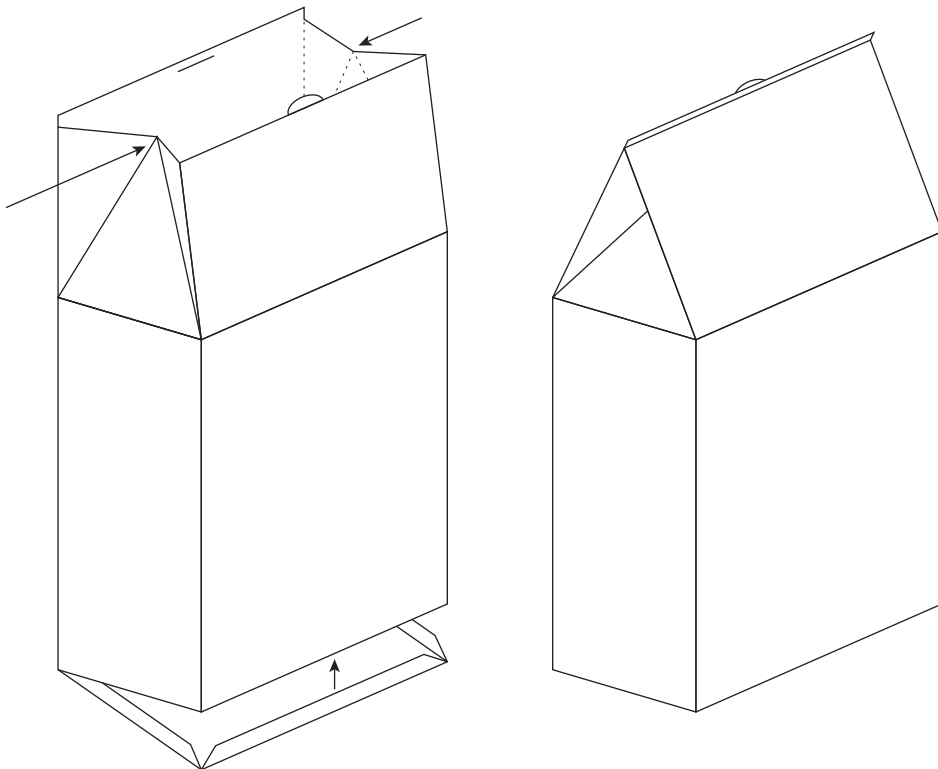


Shapes are to scale.

- Cut lines
- ..... Score lines
- //// Glue tabs



Score along the dotted lines and then glue the two pieces together at the glue tabs. Make sure the tabs are glued to the inside of the box.



Glue the base to the box using the glue tabs. Then fold the triangular score lines inward so that the top of the roof closes. Push the tab into the slot to secure it.

Secure any loose spots with glue and decorate.