



MEASUREMENTS

- Crumb Cake Cardbase: 8-1/2" x 5-1/2" scored in half
- Early Espresso: 5-1/8" x 3-7/8"
- Pink Print: 5" x 3-3/4"
- Basic White: 4-3/4" x 3-1/2"
- Window Sheet: 3-1/2" x 3-1/2"
- Heart box, 1/2" x strip of vellum & Gold Foil scraps

INSTRUCTIONS

- Stamp the words on vellum/label in Versamark, pour Gold Emboss powder over the top and heat.
- **BOX:**
 - Snip the ends of the vellum strip to make banners.
 - Cut the heart out of the center of the heart box with the heart from the Give It a Whirl Dies.
 - Cut 3 small hearts from Gold Foil with hearts from Give It a Whirl dies.
 - Attach window sheet, hearts and vellum banner.
- **CARD:**
 - Cut 4th & 5th largest circle die from the center of the Espresso panel.
 - Cut the 4th largest circle from the printed paper and attach to Espresso.
 - Attach key stickers to the white panel and attach to center of card base.
 - Attach Window sheet to the back of the circle cut out.
 - Flip and attach Foam Strips around the back of the circle panel.
 - Place sequins on top of the keys, then line up and attach the circle panel above.
 - Finish assembling the card and attach Iridescent Rhinestones.

Key to my heart Alternates

Tami White
tami@stampwithtami.com
www.stampwithtami.com



Prepaid Paper
Pumpkin
Subscription 1-
Month - 137858



Key To My Heart
Paper Pumpkin
Refill - 162472



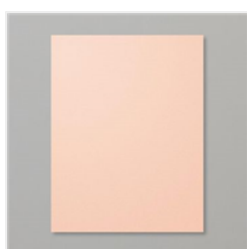
Heart Boxes -
162417



VersaMark Pad -
102283



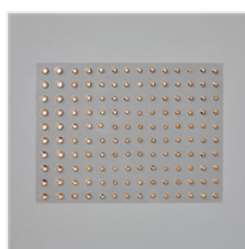
Metallics
Embossing
Powders - 155555



Petal Pink 8-1/2" X
11" Cardstock -
146985



Gold Foil Sheets -
132622



Champagne
Rhinestone Basic
Jewels - 151193



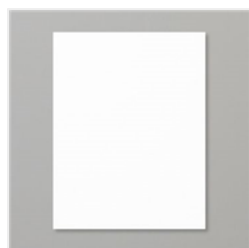
Window Sheets -
142314



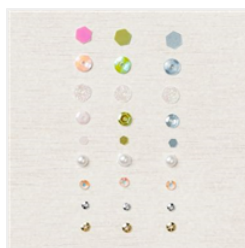
Crumb Cake 8-1/2"
X 11" Cardstock -
120953



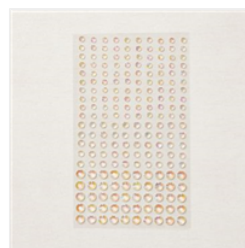
Early Espresso 8-
1/2" X 11"
Cardstock -
119686



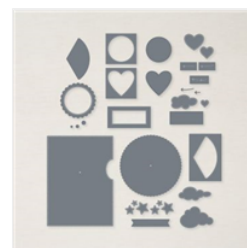
Basic White 8-1/2"
X 11" Cardstock -
159276



For Everything
Fancy Sequins -
159187



Iridescent
Rhinestones Basic
Jewels - 158130



Give It A Whirl
Dies - 154336



Heat Tool - 129053



Stampin' Cut &
Emboss Machine -
149653



Paper Trimmer -
152392



Stampin' Seal -
152813



Foam Adhesive
Strips - 141825