



Tami White  
tami@stampwithtami.com  
www.stampwithtami.com

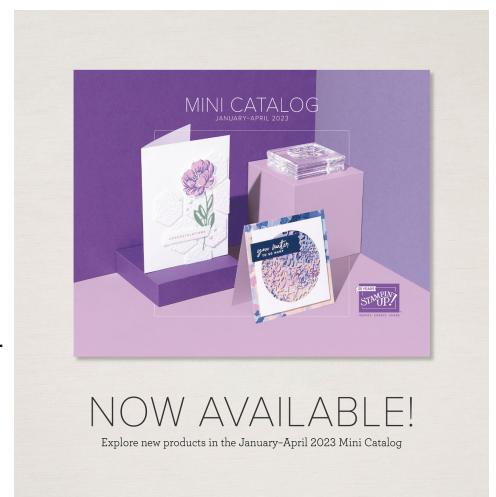


#### Cutting & Scoring

- Card Base: 8-1/2" x 5-1/2" scored in half
- Frame Panel: 5-1/8" x 3-7/8"
- Dry Brushed Metallic: 5" x 3-3/4"
- Inside Vanilla: 5" x 3-3/4"
- Scraps: Foil, Vanilla, Gray/Espresso

#### Instructions:

- Attach the Adhesive sheet to the back of the Gray/Espresso and cut the thinnest words.
- Cut the middle width words in Vanilla.
- Cut the widest words from Rose Gold/Gold Foil.
- Assemble the card with Seal Adhesive & Stampin' Dimensionals.



# Love For You Card Set

Tami White  
tami@stampwithtami.com  
www.stampwithtami.com



Love For You  
Bundle (English) -  
160406



Love For You  
Photopolymer  
Stamp Set  
(English) - 160398



Love For You Dies  
(English) - 160403



Rose Gold 12" X  
12" (30.5 X 30.5  
Cm) Specialty  
Paper - 159139



Gold Foil Sheets -  
132622



Basic Gray 8-1/2"  
X 11" Cardstock -  
121044



Early Espresso 8-  
1/2" X 11"  
Cardstock -  
119686



Calypso Coral 8-  
1/2" X 11"  
Cardstock -  
122925



Soft Succulent 8-  
1/2" X 11"  
Cardstock -  
155776



Very Vanilla 8-1/2"  
X 11" Thick  
Cardstock -  
144237



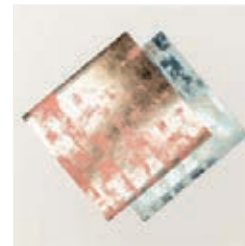
Adhesive Sheets -  
152334



Stampin' Seal -  
152813



Stampin'  
Dimensionals -  
104430



Dry Brushed  
Metallic 12" X 12"  
(30.5 X 30.5 Cm)  
Specialty Designer  
Series Paper -  
160837