



Tami White
tami@stampwithtami.com
www.stampwithtami.com



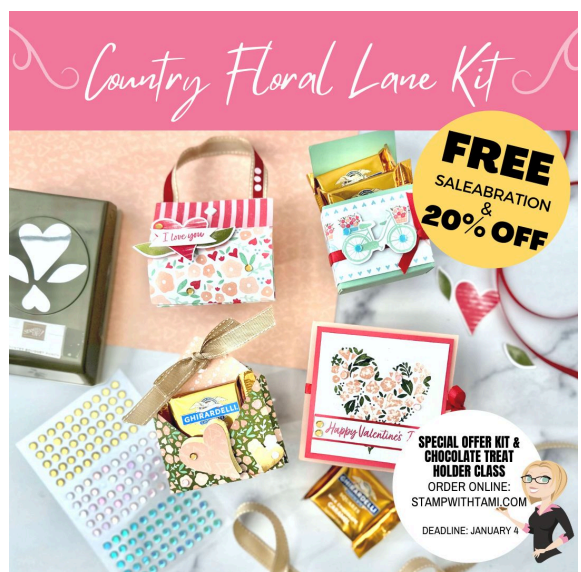
See my video for how to make pop out swing fun fold cards.

MEASUREMENTS:

- Sweet Sorbet Card Base: 8-1/2" x 5-1/2" scored in half
- Designer Series Paper for inside and outside: (2) 5-1/4" x 4"
- Sweet Sorbet Insert: 6" x 4-1/2"
Scored at 2" & 4" after attaching DSP
- Designer Paper Insert: 5-3/4" x 4-1/4"
- Basic White (Inside): 3-1/2" x 3" scored at 1-1/2"
- Scraps: Basic White, Sweet Sorbet & scraps from DSP

BOX:

- Score the card base and insert.
- Attach the designer series paper to the front, inside and insert.
- Using the Stampin' Cut & Emboss Machine to cut:
Cut the largest circle from the center of the card base.
You will use the cut out circle for the swing.
Cut the 2nd largest circle from white.
- Punch out couple of hearts and leaves from the DSP.
- Stamp the words on the top of the white circle.
- Assemble the card with Seal, Seal + and Stampin' Dimensionals.



Country Floral Lane [Pop Out Swing Series #9]

Tami White
tami@stampwithtami.com
www.stampwithtami.com



Sweet Sorbet
Classic Stampin'
Pad - 159216



Basic White 8-1/2"
X 11" Cardstock -
159276



Sweet Sorbet 8-
1/2" X 11"
Cardstock -
159268



Iridescent Pearl
Basic Jewels -
158987



Stylish Shapes
Dies - 159183



Stampin' Cut &
Emboss Machine -
149653



Paper Trimmer -
152392



Simply Scored
Scoring Tool -
122334



Stampin' Seal -
152813



Stampin' Seal+ -
149699



Stampin'
Dimensionals -
104430

