



See my video for how to make these party crackers and gift boxes.

PARTY CRACKERS:

- Designer Paper for Cracker Box Die: 6" x 5-1/4" each
- Cut cracker box with die.
- Assemble the cracker boxes and tie ribbon.

BOX:

- **BOX BASE - CARD STOCK:** 10-3/8" X 10-3/8"
- **BOX LID - DESIGNER PAPER:** 10-1/2" X 10-1/2"
- **WINDOW SHEET:** 5-1/2" X 4"
- **SCORE:** 1-1/4" & 2-1/2" on all sides
- Cut the corners as shown in yellow on the template
- Cut the largest Stitched Rectangle die from the center for window (see video)
- Assemble the box with Seal +
- Assemble the rest of the box.



Splendid Day [Party Cracker Series #6]

Tami White
 tami@stampwithtami.com
 www.stampwithtami.com



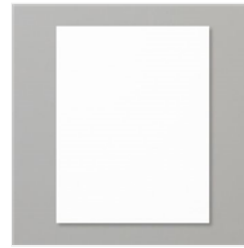
Splendid Day Suite Collection (English) - 159681



Splendid Day 12" X 12" (30.5 X 30.5 Cm) Specialty Designer Series Paper - 159666



Window Sheets - 142314



Basic White 8-1/2" X 11" Thick Cardstock - 159229



Open Leaf Trinkets - 159960



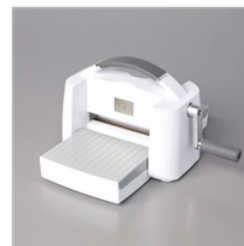
Soft Sea Foam 3/8" (1 Cm) Seam Binding Ribbon - 159680



Linen Thread - 104199



Rectangle Stitched Dies - 151820



Stampin' Cut & Emboss Machine - 149653



Cracker & Treat Box Dies - 159182



Stampin' Seal - 152813



Stampin' Seal+ - 149699



Simply Scored Scoring Tool - 122334



Bone Folder - 102300



Ho Ho Ho Party Crackers & Tray Holder

Tami White
tami@stampwithtami.com
www.stampwithtami.com