



See my video for how to make these party crackers and gift boxes.

#### PARTY CRACKERS:

- Designer Paper for Cracker Box Die: 6" x 5-1/4" each
- Cut cracker box with die.
- Assemble the cracker box.es

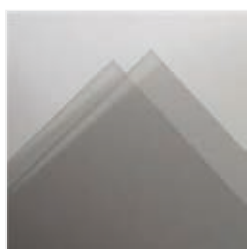
#### BOX:

- **BOX BASE - CARD STOCK:** 10-3/8" X 10-3/8"
- **BOX LID - DESIGNER PAPER:** 10-1/2" X 10-1/2"
- **WINDOW SHEET:** 5-1/2" X 4"
- **SCORE:** 1-1/4" & 2-1/2" on all sides
- Cut the corners as shown in yellow on the template
- Cut the rectangle die from the center for window (see video)
- Assemble the box with Seal +
- Stamp the words on Vellum Cardstock. Pour White Emboss Powder over the top and heat.
- Die cut frames/foilage from the Fitting Florets as desired.
- Optional: I applied the Wink of Stella Glitter brush to the navy frame for sparkle.
- Assemble the rest of the box.

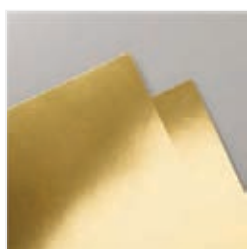


# Fitting Florets [Party Cracker Series #3]

Tami White  
tami@stampwithtami.com  
www.stampwithtami.com



Window Sheets -  
142314



Gold Foil Sheets -  
132622



Vellum 8-1/2" X  
11" Cardstock -  
101856



Night Of Navy 8-  
1/2" X 11"  
Cardstock -  
100867



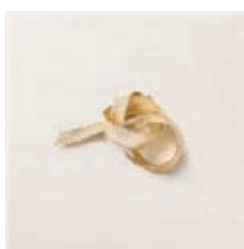
Polished Pink 8-  
1/2" X 11"  
Cardstock -  
155710



Basic White 8-1/2"  
X 11" Thick  
Cardstock -  
159229



Versamark Pad -  
102283



Gold 3/8" (1 Cm)  
Shimmer Ribbon -  
156470



Basics Embossing  
Powders - 155554



Cracker & Treat  
Box Dies - 159182



Rectangle Stitched  
Dies - 151820



Paper Trimmer -  
152392



Stampin' Cut &  
Emboss Machine -  
149653



Simply Scored  
Scoring Tool -  
122334



Heat Tool - 129053



Stampin' Seal -  
152813



Stampin' Seal+ -  
149699

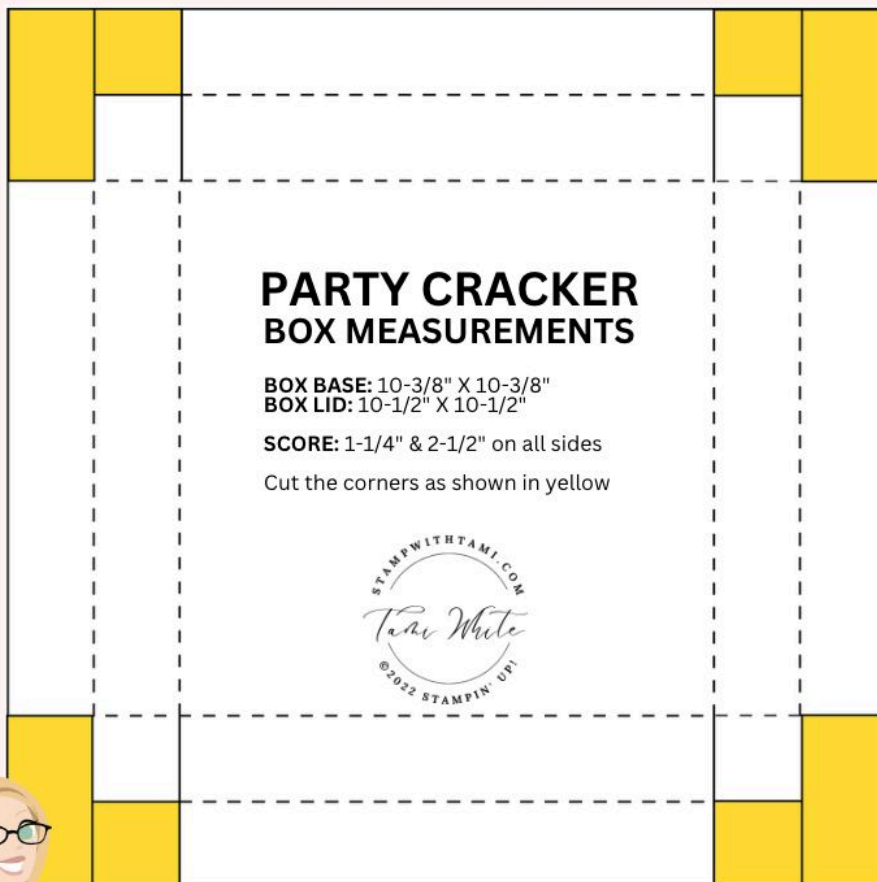


Wink Of Stella  
Clear Glitter Brush  
- 141897

# Ho Ho Ho Party Crackers & Tray Holder

Tami White  
tami@stampwithtami.com  
www.stampwithtami.com

## Party Cracker BOX TEMPLATE



### PARTY CRACKER BOX MEASUREMENTS

**BOX BASE:** 10-3/8" X 10-3/8"  
**BOX LID:** 10-1/2" X 10-1/2"

**SCORE:** 1-1/4" & 2-1/2" on all sides

Cut the corners as shown in yellow



stampwithtami.com

SCAN FOR  
VIDEO

