



Tami White  
tami@stampwithtami.com  
www.stampwithtami.com



Box #8 in my Treat Box Series. See video for how to do create this.

#### MEASUREMENTS:

- Pumpkin Pie Box Base: 11" x 4"  
Score on the 11" side at 2-1/2" & 4-1/2"
- Pumpkin Pie Sides (2): 3" x 3"  
Score 3 sides at 1/2"
- Black Striped DSP Box Top: 6" x 3-3/4"
- White Striped DSP Front: 2-3/8" x 3-3/4"
- White Striped DSP Box Sides: 2-3/8" x 1-3/4"
- Pumpkin Pie Box Handle: 6" x 1/2"  
Score on either end at 3/4"
- Scraps: Shimmery White

#### INSTRUCTIONS:

- Cut the oval from the Beautiful Shapes Dies.
- Stamp the words on the oval. Stamp the witch and cauldron on scrap.
- Color the images with Stampin' Blends Markers (See chart).
- Use the Blending Brushes and Pumpkin Pie ink to color the white striped DSP for the bottom/sides.
- Punch the corners of the front of the box top with the Ladybug Punch to round the corner
- Attach the designer series paper to the box panels with Seal Adhesive.
- Use the Bone Folder to loosen the fibers and round the box top.
- Attach Glitter Washi Tape to the handle and box base.
- Assemble the box with Seal+ Adhesive.
- Using the piercing end of the Take Your Pick Tool, punch a hole and attach the brads to the handle and the sequin on the front flap.
- Assemble the remaining pieces to the box.
- Attach the sequins.

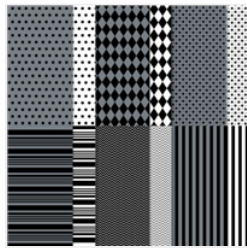


# Best Witches [Treat Box Series #8]

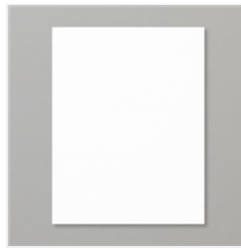
Tami White  
tami@stampwithtami.com  
www.stampwithtami.com



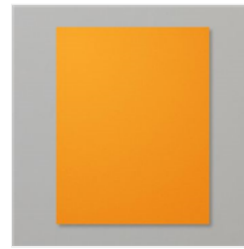
Best Witches Cling Stamp Set (English) - 159860



Black & White Designs 12" X 12" (30.5 X 30.5 Cm) Designer Series Paper - 159861



Shimmery White 8-1/2" X 11" Cardstock - 101910



Pumpkin Pie 8-1/2" X 11" Cardstock - 105117



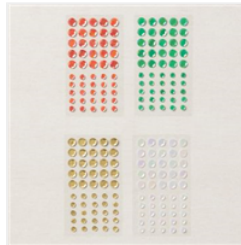
Tuxedo Black Memento Ink Pad - 132708



Pumpkin Pie Classic Stampin' Pad - 147086



Glitter Washi Four Pack - 159973



Adhesive Backed Seasonal Sequins - 159964



Round & Square Brads - 155570



Stampin' Blends Light Combo Pack - 159465



Crumb Cake Stampin' Blends Combo Pack - 154882



Bermuda Bay Stampin' Blends Combo Pack - 154878



Pool Party Stampin' Blends Combo Pack - 154894



Smoky Slate Stampin' Blends Combo Pack - 154904



Basic Black Stampin' Blends Combo Pack - 154843



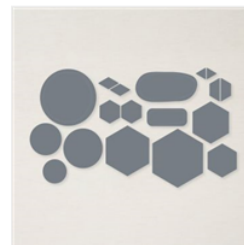
Daffodil Delight Stampin' Blends Combo Pack - 154883



Pumpkin Pie Stampin' Blends Combo Pack - 154897



Stampin' Blends Color Lifter - 144608



Beautiful Shapes Dies - 158046



Ladybug Builder Punch - 157698

# Best Witches [Treat Box Series #8]

Tami White  
tami@stampwithtami.com  
www.stampwithtami.com



Stampin' Seal -  
152813



Stampin' Seal+ -  
149699



Stampin'  
Dimensionals -  
104430



Blending Brushes -  
153611

*Best Witches Colors*

**BEST WITCHES TREAT BOX STAMPIN' BLENDS COLOR CHART**  
FULL INSTRUCTIONS AT [STAMPWITHTAMI.COM](http://STAMPWITHTAMI.COM)



**FACE:** NATURALS 900, 800 & 700  
**HAIR:** CRUMB CAKE  
**DRESS:** BERMUDA BAY & POOL PARTY  
**CAPE & HAT:** BASIC BLACK, SMOKY SLATE & COLOR LIFTER  
**LEGS:** BASIC BLACK  
**HAT BAND:** PUMPKIN PIE  
**BUCKLE:** DAFFODIL DELIGHT  
**BROOM:** CRUMB CAKE



**CALDRON:** BASIC BLACK, GRAY GRANITE & COLOR LIFTER  
**BUBBLES:** POOL PARTY  
**FLAME:** PUMPKIN PIE  
**WOOD:** NATURALS 400 & 300

©STAMPIN' UP!



# Treat Box Cuts



**BOX  
HANDLE**

6" X 1/2"  
SCORE ENDS AT 3/4"

**BOX  
SIDES**

3" X 3"  
SCORED 1/2" ON 3 SIDES



**BOX  
BASE**

11" X 4"  
SCORED AT 2-1/2" X 4-1/2"

STAMPWITHTAMI.COM  
Tami White  
--- ©2022 STAMPIN' UP! ---