



Tami White
tami@stampwithtami.com
www.stampwithtami.com



Card 3 in my Side Step Series. See template and video for how to make this fold.

MEASUREMENTS:

- Coastal Cabana Card Base: 8-1/2" x 5-1/2"
- Black Mat (Left): 4" x 2-3/4"
- Very Vanilla (Left): 3-3/4" x 2-1/2"
- Granny Apple (Front): 5-1/4" x 1-1/2"
- Granny Apple (Front): 5-1/4" x 3/4"
- Granny Apple (Middle Step): 2-1/2" x 1-1/2"
- Granny Apple (Middle Step): 2-1/2" x 3/4"
- Granny Apple (Back Step): 2-1/2" x 2-3/4"
- Basic Black (Right front step): 2-1/2" x 3/4"
- Window Sheet Strip: 2" x 1/2"

CAMPER:

- Blushing Bride: Door, Top & Bottom
- Basic Black: Top, Bottom, Hitch & Wheel
- Granny Apple: Wreath (use Adhesive Sheets)
- Bermuda Bay: Bow (use Adhesive Sheets)
- Daffodil Delight: Curtains, background of the window and door
- Vellum: Window and Door

MISCELLANEOUS SCRAPS

- Mossy Meadow - Tree Solids
- Parakeet Party - Tree Outlines (use Adhesive Sheets)
- Daffodil Delight: Banners (2) (use Adhesive Sheets)
- Very Vanilla - Dog
- Crumb Cake: Sign

INSTRUCTIONS:

- Create Side Step Fold (see template):
On the 5-1/2" side, 3" from the side cut from 1" - 6-1/2".
On the 8-1/2" side, 4-1/4" from the top score in 3".
On the opposite side score 2-1/2" from the end at 1", 2", 3-1/4", 4-1/2" & 6-1/2"
- Stamp the dog image in Versamark. Pour Black Emboss Powder over the top then heat. Die cut.
- Use the guide (or list above) to cut and assemble the die cut pieces.
- Cut the Parakeet Party (grass) strips with the edgelit from the Heron Dies.
- Attach the dog to the Window Sheet strip with Seal Adhesive.
- Assemble the cards with Seal Adhesive & Stampin' Dimensionals.
- Attach Classic Matte Dots.



Tree Lot Camper [Side Step Series Card 3]

Tami White
tami@stampwithtami.com
www.stampwithtami.com



Trees For Sale
Photopolymer
Stamp Set
(English) - 159785



Tree Lot Dies -
159938



Campology Cling
Stamp Set -
152553



Heron Dies -
158896



Tuxedo Black
Memento Ink Pad -
132708



VersaMark Pad -
102283



Basics Embossing
Powders - 155554



Vellum 8-1/2" X
11" Cardstock -
101856



Window Sheets -
142314



Mossy Meadow 8-
1/2" X 11"
Cardstock -
133676



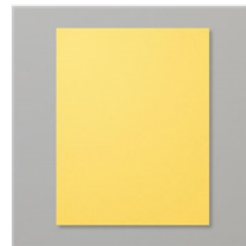
Granny Apple
Green 8-1/2" X 11"
Cardstock -
146990



Parakeet Party 8-
1/2" X 11"
Cardstock -
159259



Blushing Bride 8-
1/2" X 11"
Cardstock -
131198



Daffodil Delight 8-
1/2" X 11"
Cardstock -
119683



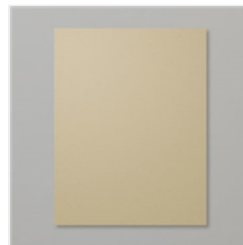
Coastal Cabana 8-
1/2" X 11"
Cardstock -
131297



Bermuda Bay 8-
1/2" X 11"
Cardstock -
131197



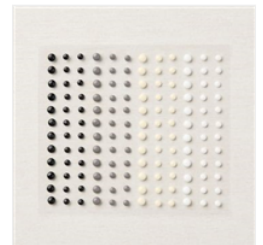
Basic Black 8-1/2"
X 11" Cardstock -
121045



Crumb Cake 8-1/2"
X 11" Cardstock -
120953



Very Vanilla 8-1/2"
X 11" Cardstock -
101650



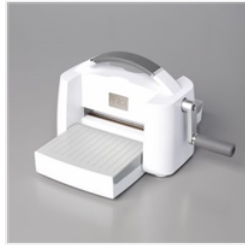
Classic Matte Dots
- 158146

Tree Lot Camper [Side Step Series Card 3]

Tami White
tami@stampwithtami.com
www.stampwithtami.com



Heat Tool - 129053



Stampin' Cut & Emboss Machine - 149653



Adhesive Sheets - 152334



Stampin' Dimensionals - 104430



Stampin' Seal - 152813



Paper Trimmer - 152392



Simply Scored Scoring Tool - 122334



Silicone Craft Sheet - 127853



Take Your Pick - 144107



Side Step Fun Fold TEMPLATE

