



Tami White
tami@stampwithtami.com
www.stampwithtami.com



CARD #8 IN MY POP UP FRONT STEP PANEL FUN FOLD SERIES.

Card Base Layers:

Card Base:

11" x 4-1/4"

Score at: 5-1/2", 6-3/4", 8-3/4" and 10"

- Back Frame Panel: 4-1/8" x 3-3/8"
Designer Series Paper: 4" x 3-1/4"
- Bottom Frame Panel: 4-1/8" x 1-7/8"
Designer Series Paper: 4" x 1-3/4"
- Top Frame Panel: 4-1/8" x 1-1/8"
Designer Series Paper: 4" x 1"

Step Panel Layers:

Pop Up Step Panel:

5-5/8" x 2-3/4"

Score at: 3/8" & 1-5/8"

- Front Frame Panel: 3-7/8" x 2-5/8"
Designer Series Paper: 3-3/4" x 2-1/2"
- Top Frame Panel: 1-1/8" x 2-5/8"
Designer Series Paper: 1" x 2-1/2"



CARD INSTRUCTIONS:

- On Petal Pink scrap paper stamp the words in Blackberry Bliss ink.
- Die cut the words with the banner from the Stylish Shapes dies.
- Stamp the bottle image on Shimmery White scrap to use as a back drop.
- Pour water in the bottle shaker dome and a couple of drop of Blackberry Bliss ink refill. Peel the adhesive backing and attach a Window Sheet scrap on top to seal the liquid in. See my video for help creating a liquid shaker dome.
- Punch the bottle punch out of the Shimmery White top frame panel and attach the liquid shaker underneath.
- Cut and score the card panels per the template instructions.
- Attach the card base layers to the card base and the step panel layers to the panel with Seal Adhesive.
- Attach the pop up step panel to the card base with Seal Adhesive (or Seal +)see the video for tips.
- Tie a bow in the Petal Pink cotton ribbon and attach to the bottle with a Glue Dot.
- Attach Polished Dots.

Wine Bottle Liquid Shaker Pop Up Front Step Card #8

Tami White
tami@stampwithtami.com
www.stampwithtami.com



Bottled Happiness
Bundle (English) -
158690



Bottled Happiness
Photopolymer
Stamp Set
(English) - 158684



Vintage Bottle
Punch - 158689



Vintage Bottle
Shaker Domes -
158788



Design A
Daydream 12" X
12" (30.5 X 30.5
Cm) Host Designer
Series Paper -
159161



Petal Pink 8-1/2" X
11" Cardstock -
146985



Blackberry Bliss 8-
1/2" X 11"
Cardstock -
133675



Shimmery White 8-
1/2" X 11"
Cardstock -
101910



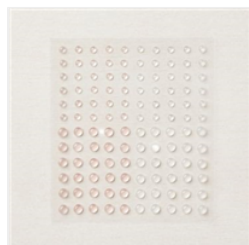
Window Sheets -
142314



Blackberry Bliss
Classic Stampin'
Pad - 147092



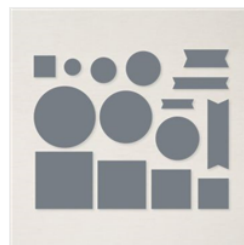
Blackberry Bliss
Classic Stampin'
Ink Refill - 133648



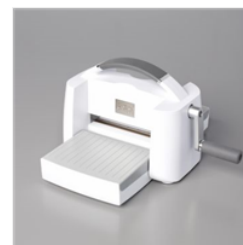
Polished Dots -
158134



1/8" (3.2 Mm)
Cotton Ribbon
Combo Pack -
158140



Stylish Shapes
Dies - 159183



Stampin' Cut &
Emboss Machine -
149653



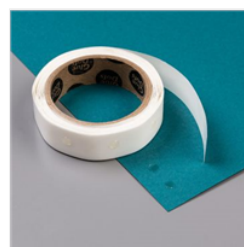
Simply Scored
Scoring Tool -
122334



Paper Trimmer -
152392



Stampin' Seal -
152813

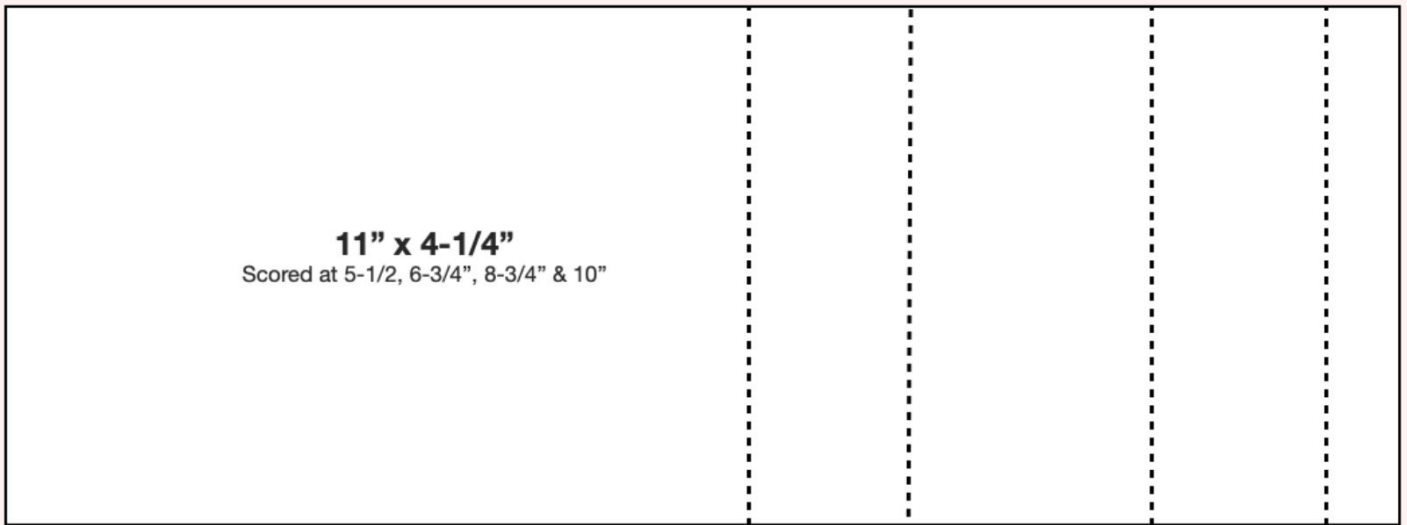


Mini Glue Dots -
103683

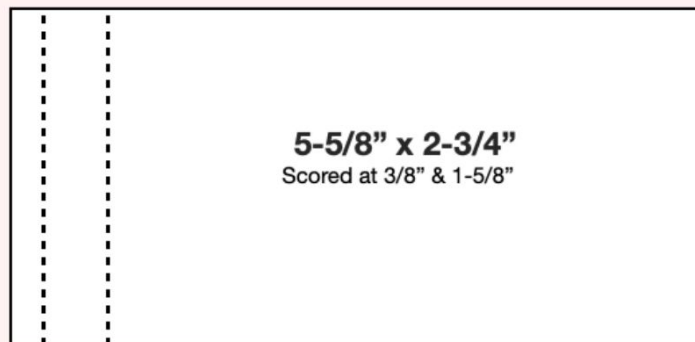
Pop Up Front Step

CARD TEMPLATE

CARD BASE



STEP PANEL



stampwithtami.com

SCAN FOR
VIDEO

