



This is card #4 in my Hues of Happiness Suite Series. Visit my blog for more in this series.

CUTS

- Evening Evergreen Card Base: 8-1/2" x 5-1/2" scored in half
- Designer Series Paper: 5-1/4" x 4"
- Basic White (Inside): 5" x 3-3/4"
- Scraps: Basic White & DSP for flowers

INSTRUCTIONS

- Stamp the words on Basic White Scrap paper and cut out with the Stylish Shapes die banner.
- Cut the flowers and leaves from the Hues of Happiness DSP & coordinating dies.
- Uses Seal Adhesive to attach the Texture Chic DSP panel and in the inside white panel.
- Attach the flowers with a mix of Seal and Dimensionals.
- Attach the banner panel with Stampin' Dimensionals.
- Attach Glossy Dots.



Purple Flowers Friend Card

Tami White
tami@stampwithtami.com
www.stampwithtami.com



Happiness
Abounds Bundle
(English) - 158824



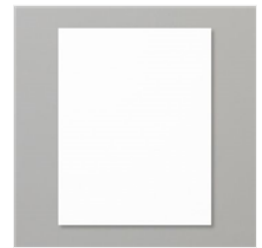
Happiness
Abounds
Photopolymer
Stamp Set
(English) - 159238



Blossoming
Happiness Dies -
158823



Tuxedo Black
Memento Ink Pad -
132708



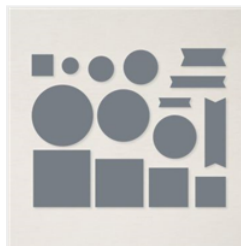
Basic White 8-1/2"
X 11" Cardstock -
159276



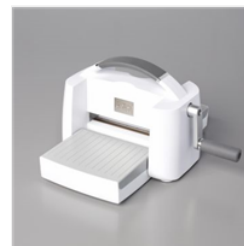
Hues Of
Happiness 12" X
12" (30.5 X 30.5
Cm) Designer
Series Paper -
158822



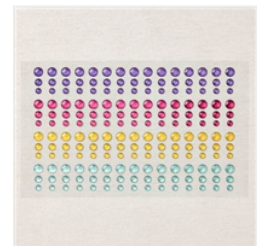
Texture Chic 12" X
12" (30.5 X 30.5
Cm) Specialty
Designer Series
Paper - 158808



Stylish Shapes
Dies - 159183



Stampin' Cut &
Emboss Machine -
149653



Glossy Dots
Assortment -
158827



Stampin' Seal -
152813



Stampin'
Dimensionals -
104430