



The tuxedo card is the final card 12 of my Arrow Fun Fold series. Check out the video for help with the arrow card fold.  
Be sure to also check out my Suit & Tie Die series for more awesome cards with this die.

#### CUTS:

- Basic Black Card Base: 11" x 4 1/4" score at 5 1/2"
- Designer Series Paper: 5-1/4" x 4"
- Poppy Parade: 5-1/4" x 4"
- Basic White: (2) 5" x 3-3/4"
- Scraps: Basic Black & Poppy Parade



#### CARD INSTRUCTIONS:

- Using the Stampin Cut & Emboss Machine cut the following from the Suit & Tie Dies:  
Poppy Parade = Bowtie Die  
Basic Black with Adhesive Sheet = Buttons & pocket rectangle
- Score the card base per the template (See video for help). Burnish all of the score lines with Bone Folder.
- Create the triangle layers for the inside and front:  
Mark 1 end of the 5-1/4" x 4" Poppy Parade panel at 2".  
Mark 1 end of the 5" x 3-3/4" Mother of Pearl & both Basic White panels at 1-7/8".  
Using the Paper Trimmer to cut from the mark to the opposite 2 corner on both sides to create the triangle.
- Stamp the words on 1 of the Basic White Triangles.
- Assemble the card base  
Seal+ (or Tear Tape) on the arrow folds, then attach 1 of the Basic White triangles over the top with regular Seal.  
Attach all of the inside Designer Paper and 2nd White Triangle (with words) with Seal Adhesive.  
Attach the top Poppy Parade & Mother of Pearl Specialty Paper with Seal Adhesive.  
Attach bow tie with Stampin' Dimensionals. Attach buttons and pocket rectangle.

# Tuxedo Arrow Fold Card

Tami White  
tami@stampwithtami.com  
www.stampwithtami.com



Many Happenings  
Cling Stamp Set -  
155001



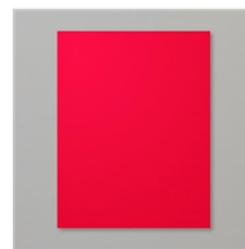
Suit & Tie Dies -  
154322



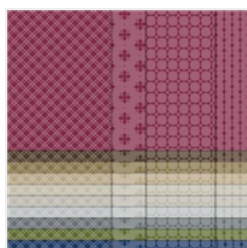
Mother Of Pearl  
12" X 12" (30.5 X  
30.5 Cm) Specialty  
Paper - 157666



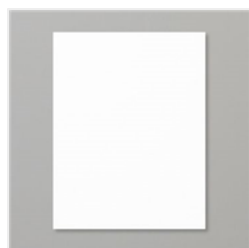
Basic Black 8-1/2"  
X 11" Cardstock -  
121045



Poppy Parade 8-  
1/2" X 11"  
Cardstock -  
119793



Neutrals 6" X 6"  
(15.2 X 15.2 Cm)  
Designer Series  
Paper - 155226



Shimmery White 8-  
1/2" X 11"  
Cardstock -  
101910



Tuxedo Black  
Memento Ink Pad -  
132708



Stampin' Cut &  
Emboss Machine -  
149653



Paper Trimmer -  
152392



Stampin' Seal -  
152813



Stampin' Seal+ -  
149699



Stampin'  
Dimensionals -  
104430

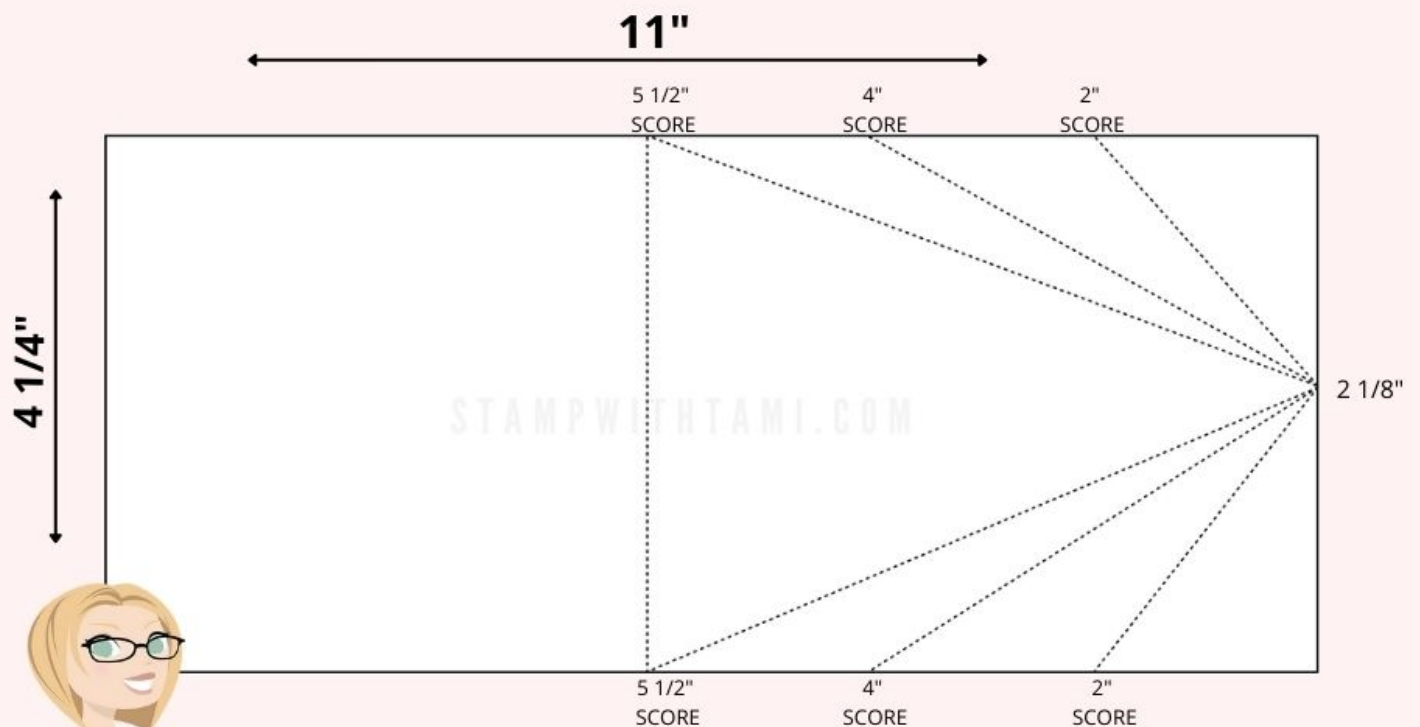


Bone Folder -  
102300



Adhesive Sheets -  
152334

# Arrow Fold CARD TEMPLATE



stampwithtami.com

SCAN FOR  
VIDEO

