

# Tami's Gumball Series Card 3: Fishbowl Liquid Shaker Card

Tami White  
tami@stampwithtami.com  
www.stampwithtami.com



Collect all 8 tutorials in my "Amazing Things to Make with your Stampin' Up! Gumball Greetings Bundle" Series.  
Card 3 is the Fishbowl Liquid Shaker Card, containing real liquid.

**CLICK FOR VIDEO TUTORIAL**

## CUTS

- Pool Party Card Base: 8-1/2" x 5-1/2" scored in half
- Sunshine & Rainbows Designer Series Paper: 5-1/4" x 4"
- Basic White (Inside): 5" x 3-3/4"
- Pool Party: 4" x 3" OR Largest Stitched So Sweetly Die
- Basic White: 3-3/4" x 2-3/4" OR 2nd Largest Stitched So Sweetly Die
- Basic White: 2-3/4" x 2-1/2"
- Window Sheet: 2-1/2" x 2-1/2"
- Scraps: Basic White & Bermuda Bay

## INSTRUCTIONS

- Stamp the words in Bermuda Bay on Basic White scrap.
- Stamp the gumball machine dome stamp on the Basic White 2-3/4" x 2-1/2" panel to use as a "guide". Then stamp the fish in Pumpkin Pie and seaweed in Granny Apple Green.
- Using the Stampin' Cut & Emboss Machine cut the following:
  - The 2 Stitched So Sweetly dies noted above in the "cuts" and cut out the words.
  - Cut the cap and base to the gumball machine. Then cut down the base of the gumball machine using the technique shared on the video.
  - Cut the dome die out of the top center of the white Stitched So Sweetly die cut panel, attach the white to the Pool Party and cut the dome again.
  - Texture the base with the Stripes & Splatters embossing folders.
- Fill the dome cup with water and add 1 drop of the Pool Party ink pad refill, then quickly remove the backing and attach the window sheet to the back to seal in the liquid.
- Wrap white ribbon (from combo pack) around the designer paper panel and tie a knot.
- Attach the dome cup to the underside of the Stitched So Sweetly panel, then attach to the designer series paper with Stampin' Dimensionals.
- Using Seal Adhesive attach the designer series paper to the card base and the 2 gumball machine panels to the top and bottom of the dome.
- Attach the words with Stampin' Dimensionals.
- Attach jewels.



# Tami's Gumball Series Card 3: Fishbowl Liquid Shaker Card

Tami White  
tami@stampwithtami.com  
www.stampwithtami.com



Gumball Greetings  
Bundle - 157648



Gumball Greetings  
Photopolymer  
Stamp Set -  
157646



Gumball Machine  
Dies - 157647



Seas The Day  
Cling Stamp Set  
(English) - 157849



Special Moments  
Photopolymer  
Stamp Set  
(English) - 158081



Pumpkin Pie  
Classic Stampin'  
Pad - 147086



Bermuda Bay  
Classic Stampin'  
Pad - 147096



Granny Apple  
Green Classic  
Stampin' Pad -  
147095



Pool Party Classic  
Stampin' Ink Refill  
- 122933



Basic White 8-1/2"  
X 11" Cardstock -  
159276



Bermuda Bay 8-  
1/2" X 11"  
Cardstock -  
131197



Granny Apple  
Green 8-1/2" X 11"  
Cardstock -  
146990



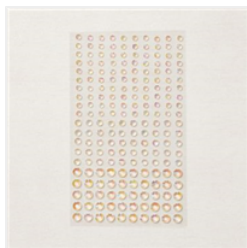
Pool Party 8-1/2" X  
11" Cardstock -  
122924



Sunshine &  
Rainbows 6" X 6"  
(15.2 X 15.2 Cm)  
Designer Series  
Paper - 158126



Window Sheets -  
142314



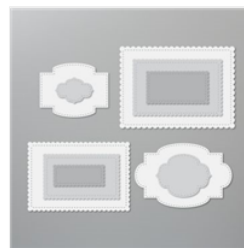
Iridescent  
Rhinestones Basic  
Jewels - 158130



Flowers For Every  
Season Ribbon  
Combo Pack -  
153620



Gumball Machine  
Shaker Domes -  
158131



Stitched So  
Sweetly Dies -  
151690



Stripes & Splatters  
3D Embossing  
Folders - 157980

# Tami's Gumball Series Card 3: Fishbowl Liquid Shaker Card

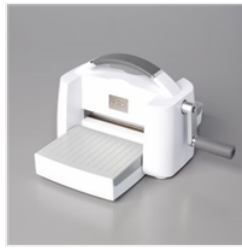
Tami White  
tami@stampwithtami.com  
www.stampwithtami.com



Timber 3D  
Embossing Folder  
- 156406



Take Your Pick -  
144107



Stampin' Cut &  
Emboss Machine -  
149653



Stampin' Seal -  
152813



Stampin'  
Dimensionals -  
104430