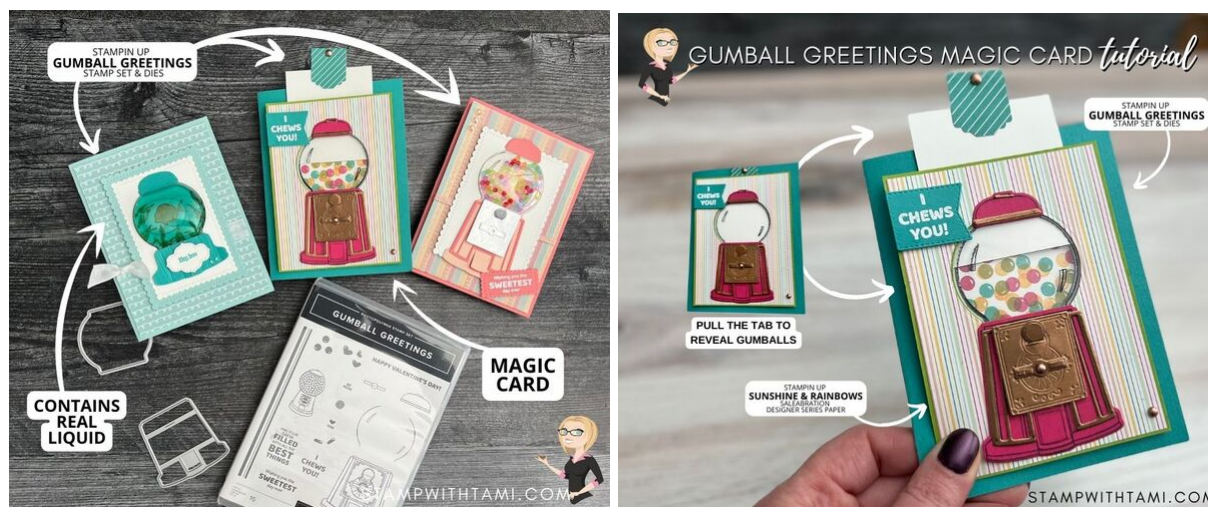


Tami's Gumball Series Card 2: Gumball Magic Card

Tami White
tami@stampwithtami.com
www.stampwithtami.com



Collect all 8 tutorials in my "Amazing Things to Make with your Stampin' Up! Gumball Greetings Bundle" Series.
Card 2 is the interactive Gumball Magic card. Pull the tab and gumballs magically appear.

CLICK FOR VIDEO TUTORIAL

CUTS

- Pool Party Card Base: 8-1/2" x 5-1/2" scored in half
- Granny Apple Green (Inside): 5" x 3-3/4"
- Basic White (Inside): 4-7/8" x 3-5/8"
- Granny Apple Green: 4-7/8" x 3-5/8"
- Sunshine & Rainbows Designer Series Paper (Rainbow Stripes): 4-3/4" x 3-1/2"
- Basic White (2) 2-3/4" x 2-1/2"
- Window Sheet: 3" x 2-1/2"
- Sunshine & Rainbows Designer Series Paper (for Pull tab): 2-1/2" x 1"
- Scraps: Melon Mambo, Bermuda Bay, Brushed Metallic (Copper)

INSTRUCTIONS

- Stamp the dome in Staz On Black on the Window Sheet and also on one of the Basic White 2-3/4" x 2-1/2" panels.
- Stamp the gumball machine cap and body outline on Melon Mambo Scrap.
- Stamp the gumballs on the white panel with the dome stamped on it. Granny Apple Green, Daffodil Delight, Melon Mambo and Bermuda Bay (See video for masking tips).
- Stamp the words in Versamark ink, then pour white heat emboss powder over the top and heat with Heat Tool.
- Using the Stampin' Cut & Emboss Machine cut the following:
 - Cut out the 2 stamped Melon Mambo gumball machine pieces with coordinating dies.
 - Cut the words embossed by Bermuda Bay with the label from the Tasteful Labels dies.
 - Attach an Adhesive Sheet to the back of copper foil and cut the 2 small line sections for the cap, the spinner and a coin.
 - Cut the faceplate from the copper foil that isn't attached to an Adhesive Sheet (it will be attached with Stampin' Dimensionals).
 - Cut the dome die out of the top center of the striped designer series paper, then attach to the Granny Apple Green layer and cut the dome again. Attach the stamped Window Sheet to the back with Seal Adhesive.
- Punch either end of the designer paper pull tab with the Lovely Labels Pick a Punch. Fold in half and attach to the remaining 2-3/4" x 2-1/2" panel with Seal Adhesive.
- Attach the gumball machine pieces and words the main panel with Seal Adhesive. Use Stampin' Dimensionals on the words and faceplate.
- On the back of the main panel attach Foam strips using the pull tab section as a guide (See video for tips).
- Line up the stamped gumball panel and attach with Seal Adhesive. Then attach the top panel with the Foam Strips and insert the pull tab panel to create the "magic".
- Attach copper Brushed Metallic dots.



Tami's Gumball Series Card 2: Gumball Magic Card

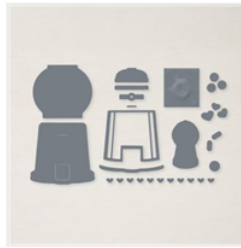
Tami White
tami@stampwithtami.com
www.stampwithtami.com



Gumball Greetings
Bundle - 157648



Gumball Greetings
Photopolymer
Stamp Set -
157646



Gumball Machine
Dies - 157647



Versamark Pad -
102283



Jet Black Stazon
Pad - 101406



Bermuda Bay
Classic Stampin'
Pad - 147096



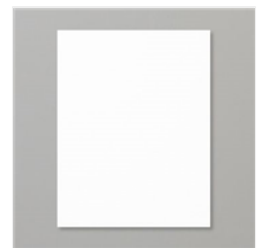
Granny Apple
Green Classic
Stampin' Pad -
147095



Melon Mambo
Classic Stampin'
Pad - 147051



Daffodil Delight
Classic Stampin'
Pad - 147094



Basic White 8-1/2"
X 11" Cardstock -
159276



Granny Apple
Green 8-1/2" X 11"
Cardstock -
146990



Melon Mambo 8-
1/2" X 11"
Cardstock -
115320



Bermuda Bay 8-
1/2" X 11"
Cardstock -
131197



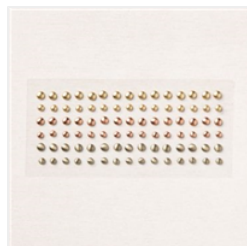
Sunshine &
Rainbows 6" X 6"
(15.2 X 15.2 Cm)
Designer Series
Paper - 158126



Brushed Metallic
Cardstock -
153524



Window Sheets -
142314



Brushed Metallic
Adhesive Backed
Dots - 156506



Basics Embossing
Powders - 155554



Heat Tool - 129053



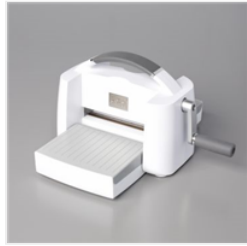
Lovely Labels Pick
A Punch - 152883

Tami's Gumball Series Card 2: Gumball Magic Card

Tami White
tami@stampwithtami.com
www.stampwithtami.com



Tasteful Labels
Dies - 152886



Stampin' Cut &
Emboss Machine -
149653



Stampin' Seal -
152813



Stampin'
Dimensionals -
104430



Mini Stampin'
Dimensionals -
144108



Adhesive Sheets -
152334



Foam Adhesive
Strips - 141825