



I created this card with the new All Together Collection of products. Check out my special offer kit for more information.

CUTS:

- Basic Black Card Base – 11" x 4-1/4" score at 5-1/2"
- Gold Foil – 3-7/8" x 5-1/8"
- All Together Designer Series Paper – 3 3/4 x 5"
- Basic White - 3-3/4" x 5"
- Scraps: Polished Pink & Gold Foil

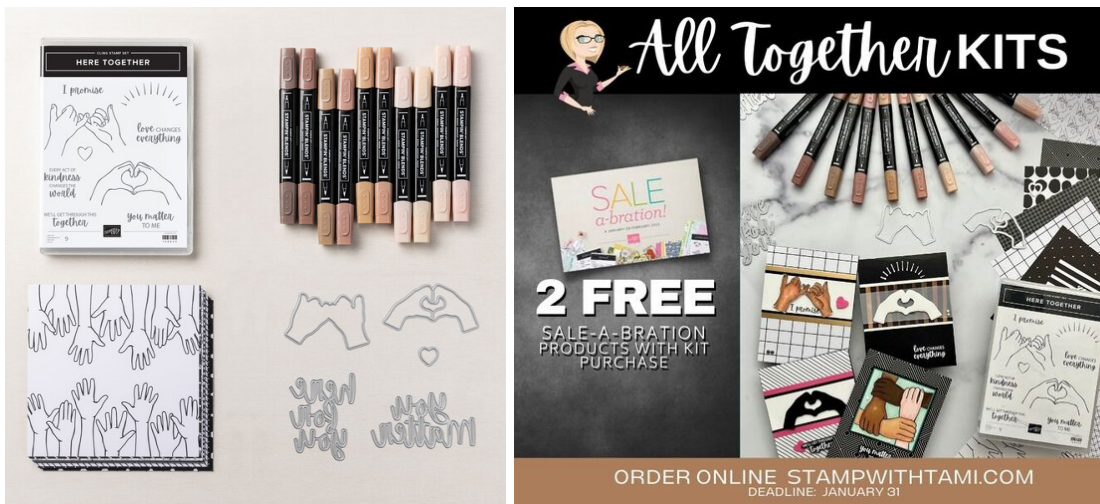
CARD INSTRUCTIONS:

- Attach an Adhesive Sheet to the back of the Polished Pink Scrap and cut out the "here for you" die.
- Cut the "here for you" die out of Gold Foil.
TIP: Cut out of the center of the Gold Foil layer that will be covered with designer paper.
- Cut the heart from Gold Foil & Polished Pink.
- Attach the Polished Pink die to the gold die, and the 2 hearts together.
- Attach the "here for you" and hearts to the designer paper with Stampin' Dimensionals.
- Attach the designer paper to the Gold Foil panel with Seal Adhesive.
- Attach the inside panel of the card with Seal Adhesive.
- Attach that panel to the the card base with Stampin' Dimensionals.
- Attach 3 jewels.

CARD SUPPLIES:

All Together Collection Kits

Tami White
 tami@stampwithtami.com
 www.stampwithtami.com



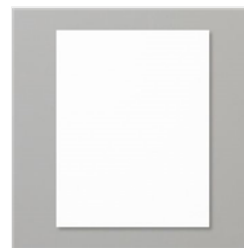
Gold Foil Sheets -
132622



Polished Pink 8-
1/2" X 11"
Cardstock -
155710



Basic Black 8-1/2"
X 11" Cardstock -
121045



Basic White 8-1/2"
X 11" Cardstock -
159276



2021-2023 In
Color Jewels -
155571



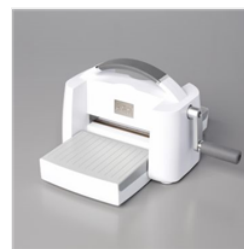
Adhesive Sheets -
152334



Stampin'
Dimensionals -
104430



Stampin' Seal -
152813



Stampin' Cut &
Emboss Machine -
149653