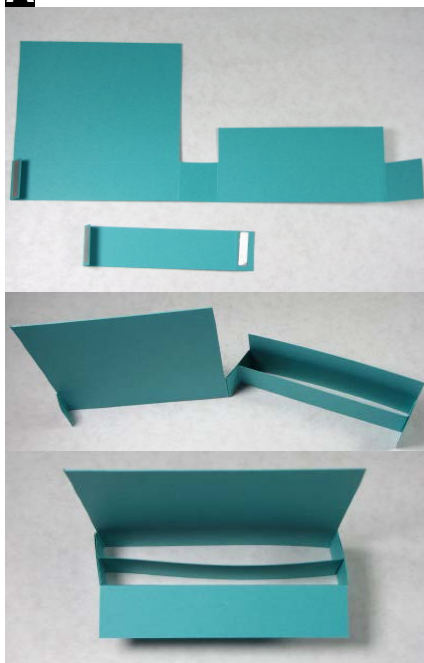
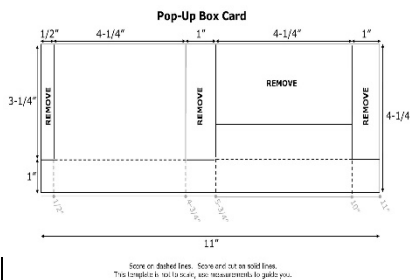


Pop-Up Box Card



Supplies

- Stamps:** Celebrate Today
Ink: Tuxedo Black Memento, Bermuda Bay, Tangelo Twist & Gold Metallic Encore
Whisper White Cardstock
 Scrap for die cutting
Bermuda Bay Cardstock
 1 4-1/4" x 11"
 1 1" x 5-1/4"
Tangelo Twist Cardstock
 Scrap for die cutting
Night of Navy Cardstock
 1 7/8" x 4-1/8"
Window Sheet
 Scraps for pop-up greeting
Gold Glimmer Paper
 Scraps for die cutting
Birthday Blast Designer Series Paper
 Pattern 1: 1 3" x 4"
 Pattern 2: 2 3/4" x 4"
 Pattern 3: 2 3/4" x 3/4"
Other
 Daffodil Delight Seam Binding Ribbon
 Big Shot & Balloon Framelits Dies
 Adhesives: Sticky Strip, Stampin' Dimensionals, and adhesive of your choice



- A.** Score 4-1/4" x 11" cardstock along the 11" side at 1/2", 4-3/4", 5-3/4", and 10". Turn the cardstock 90 degrees and score along the 4-1/4" side at 1".
- B.** Score 1" x 5-1/4" 1/2" from each end along the 5-1/4" side. Fold along score lines to create a "Z" shaped fold.

Place the card body back onto the Paper Trimmer with 1" x 11" scored section at the 2" mark and the 1" scored section of the 4-1/4" side against the bottom measuring guide. Lift the cutting blade and place it at the score line at 1". Press cutting blade down and cut to the next score line at 5-1/4". This leaves one larger section with 1" remaining above the 1" score line.

Lay 4-1/4" x 11" cardstock flat with horizontal score line on the bottom. Following the scored lines cut away all sections except the two largest from the top edge down to the 1" score line.

Add Sticky Strip to both scored ends of 1" x 5-1/4" strip. Place one on each side of cardstock so the Sticky Strip is on the outside edge of each "Z" fold. Add Sticky Strip to the underside of the 1/2" x 1" scored section at one end of the card body.

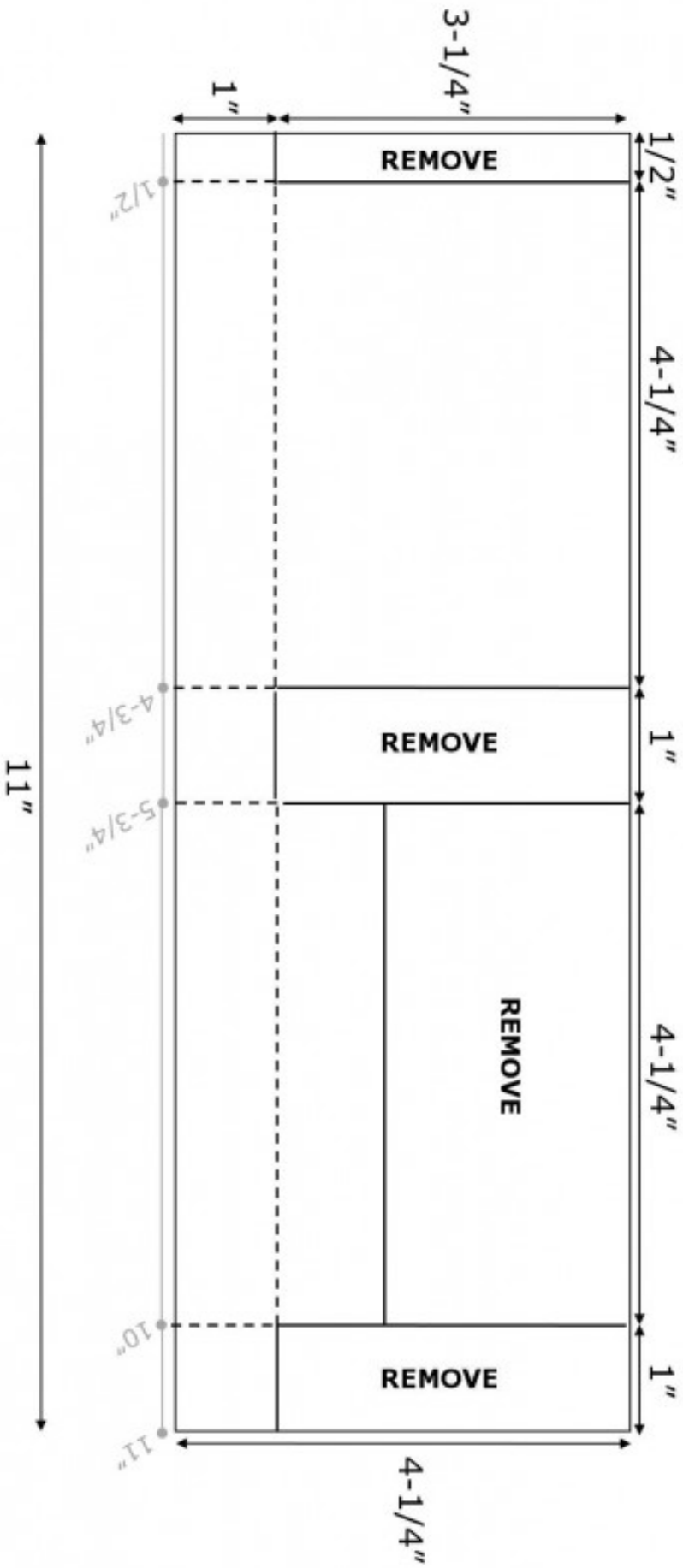
Place the "Z" fold strip so one end of each end section lines up with the opposite edges of the two 1" scored sections on either side of the shorter large section. Then fold the shorter section with the "Z" fold piece attached to the larger section and adhere the 1/2" scored section on the card body inside the 1" edge section to finish creating the box.

- C.** You should now have the base of the card free standing in a box fashion. Decorate by attaching the "happy" die cut to front panel with strips of window sheets adhered inside the front section of the card with Glue Dots
- Attach balloon and die cut ribbon accent to a window sheet strip then adhere the end of the strip behind the middle panel ("Z" fold piece). Glue dots work great. Add Birthday Bash Specialty Designer Series Paper pieces and remaining stamped accents to card. Lay card down and press the center and it will fold flat and fit right into an envelope.

Contact Info:

Tami White Stampin Up Independent Demonstrator
 tami@stampwithtami.com
 www.stampwithtami.com

Pop-Up Box Card



Score on dashed lines. Score and cut on solid lines.
 This template is not to scale, use measurements to guide you.